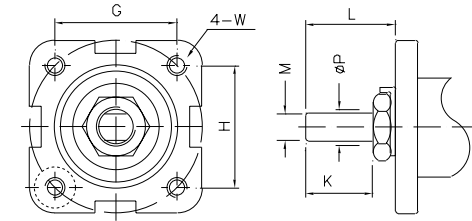
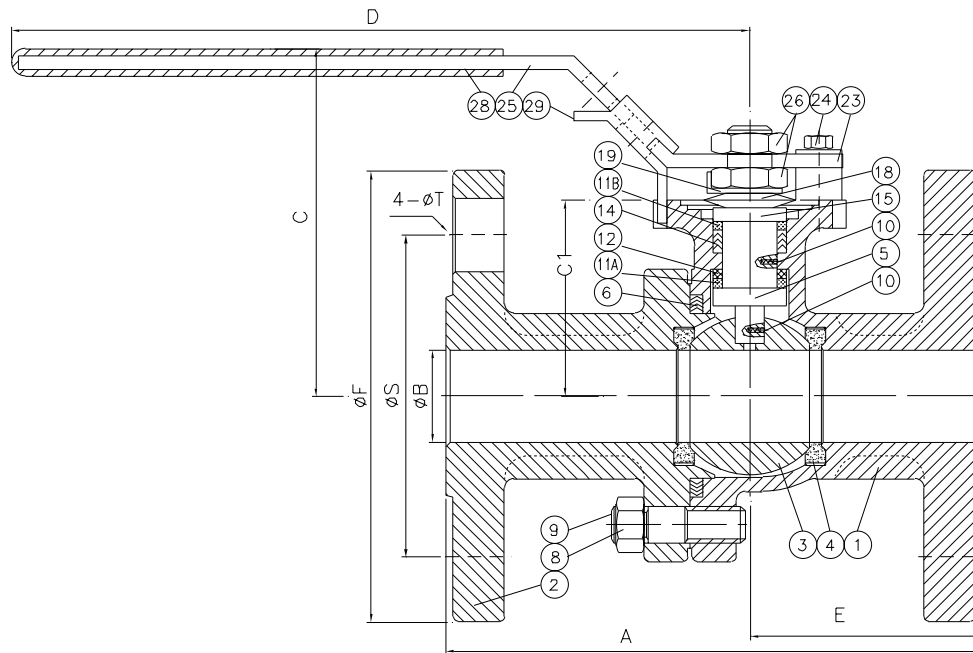


SIZE	A	B	C	D	E	CI	F	G	H	K	L	M	P	S	T	W
1/2"	4.25	0.625	2.60	6.50	1.79	1.54	3.50	1.169	1.169	0.315	0.551	0.250	0.375	2.38	0.62	10-24UNC
3/4"	4.62	0.787	2.91	6.50	2.01	1.67	3.88	1.169	1.169	0.315	0.551	0.250	0.375	2.75	0.62	10-24UNC
1"	5.00	1.000	3.43	7.87	2.13	2.05	4.25	1.392	1.392	0.433	0.748	0.315	0.438	3.12	0.62	1/4-20UNC
1 1/4"	5.50	1.260	3.62	7.87	2.20	2.20	4.62	1.392	1.392	0.433	0.748	0.315	0.438	3.50	0.62	1/4-20UNC
1 1/2"	6.50	1.496	4.13	9.84	2.76	2.60	5.00	1.949	1.949	0.551	0.906	0.374	0.625	3.88	0.62	5/16-18UNC
2"	7.00	2.000	4.53	10.43	3.07	2.95	6.00	1.949	1.949	0.551	0.906	0.374	0.625	4.75	0.75	5/16-18UNC



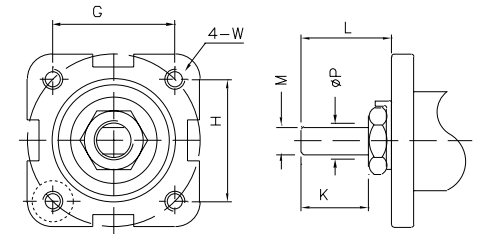
Mounting Dimension



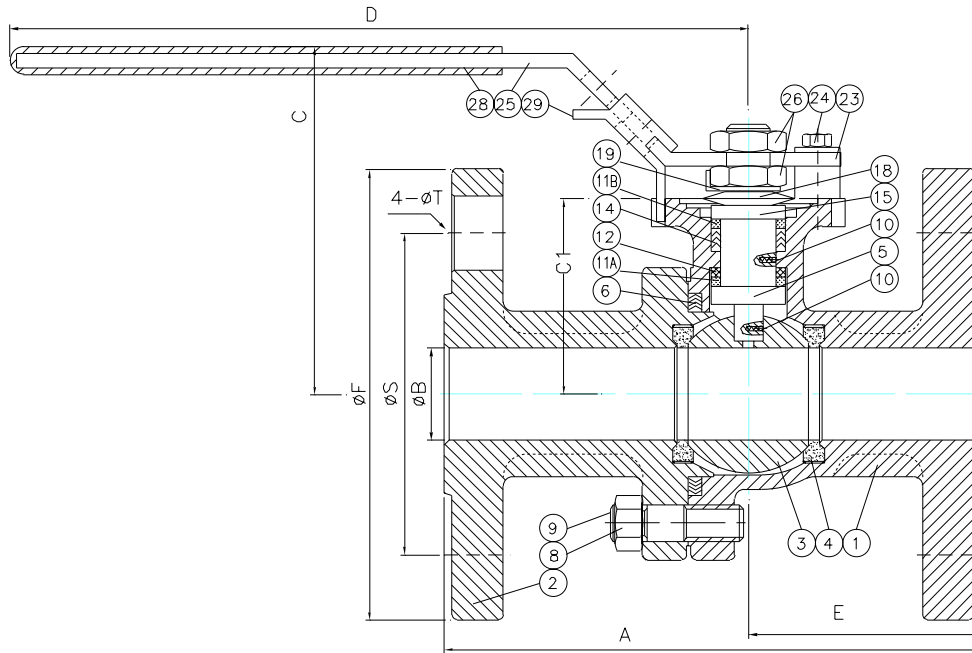
BILL OF MATERIAL			F15-316	F15-WCB
NO	PART NAME	Q'TY	STAINLESS STEEL	CARBON STEEL
29	LOCATING LOCK	1	SS304	
28	HANDLE SLEEVE	1	VINYL	
26	HANDLE NUT	2	SS304	
25	HANDLE	1	SS304	
24	VALVE STOP BOLT	1	SS304	
23	VALVE STOP SET SLEEVE	1	SS304	
19	TAB WASHER	1	SS304	
18	BELLEVILLE WASHER	2	SS301	
15	PK GLD SLEEVE	1	SS304	
14	STEM PACKING	3	GRAPHITE	
12	THRUST WASHER	1	50% SS316 + 50% PTFE	
11B	PACKING PROTECTOR	1	PEEK	
11A	WASHER PROTECTOR	1	PEEK	
10	ANTI-STATIC	2	SS316	
9	BODY STUD	4	A193 B8	A193 B7
8	BODY NUT	4	A194 GR.8	A194 GR.2H
6	BODY GASKET	1	SPRAL WOUND WIRE (316/GRAPHITE)	
5	STEM	1	ASTM A479 Gr. 316	
4	SEAT	2	15% RPTFE	
3	BALL	1	A351-CF8M	
2	CAP	1	A351-CF8M	A216-WCB
1	BODY	1	A351-CF8M	A216-WCB

<b>FLOW-TEK, INC.</b>		SERIES # F15
11850 Tanner Road Houston, Texas 77041		TEL: 832-912-2300 FAX: 832-912-2301
DRAWING TITLE : 1/2" - 2" F15 Sales Drawing (Fire Safe)		SIZE : 1/2"-2"
SCALE : N.T.S.	DRAWN BY : MG	REV. LEVEL 00
DATE : Feb. 13, 2004	APPROVED BY : WSB	
CUSTOMER :	DRAWING NO. :	F15FS-SD-01

SIZE	A	B	C	D	E	C1	F	G	H	K	L	M	N	P	S	T	W
1/2"	5.50	0.591	2.60	6.50	2.44	1.575	3.75	1.169	1.169	0.315	0.551	0.250	4	0.366	2.62	0.62	10-24UNC
3/4"	6.00	0.787	2.91	6.50	2.72	1.673	4.62	1.169	1.169	0.315	0.551	0.250	4	0.366	3.25	0.75	10-24UNC
1"	6.50	0.984	3.43	7.87	2.91	2.047	4.88	1.394	1.394	0.433	0.748	0.315	4	0.429	3.50	0.75	1/4-20UNC
1 1/4"	7.00	1.260	3.62	7.87	2.95	2.205	5.25	1.394	1.394	0.433	0.748	0.315	4	0.429	3.88	0.75	1/4-20UNC
1 1/2"	7.50	1.496	4.23	9.84	3.27	2.598	6.12	1.949	1.949	0.551	0.906	0.374	4	0.618	4.50	0.88	5/16-18UNC
2"	8.50	1.969	4.53	10.43	3.94	2.953	6.50	1.949	1.949	0.551	0.906	0.374	8	0.618	5.00	0.75	5/16-18UNC



Mounting Dimension



BILL OF MATERIAL			F30-316	F30-WCB
NO	PART NAME	QTY	STAINLESS STEEL	CARBON STEEL
29	LOCATING LOCK	1	SS304	
28	HANDLE SLEEVE	1	VINYL	
26	HANDLE NUT	2	SS304	
25	HANDLE	1	SS304	
24	VALVE STOP BOLT	1	SS304	
23	VALVE STOP SET SLEEVE	1	SS304	
19	TAB WASHER	1	SS304	
18	BELLEVILLE WASHER	2	SS301	
15	PK GLD SLEEVE	1	SS304	
14	STEM PACKING	3	RPTFE	
12	THRUST WASHER	1	50% SS316 + 50% PTFE	
11B	PACKING PROTECTOR	1	PEEK	
11A	WASHER PROTECTOR	1	PEEK	
10	ANTI-STATIC	2	SS316	
9	BODY STUD	4	ASTM A193 B8	ASTM A193 B7
8	BODY NUT	4	ASTM A194 GR.8	ASTM A194 GR.2H
6	BODY GASKET	1	SPRAL WOUND WIRE (316/GRAPHITE)	
5	STEM	1	ASTM A479 Gr. 316	
4	SEAT	2	RPTFE	
3	BALL	1	ASTM A351 CF8M	
2	CAP	1	A351-CF8M	A216-WCB
1	BODY	1	A351-CF8M	A216-WCB

FLOW-TEK, INC.

11850 Tanner Road  
Houston, Texas 77041

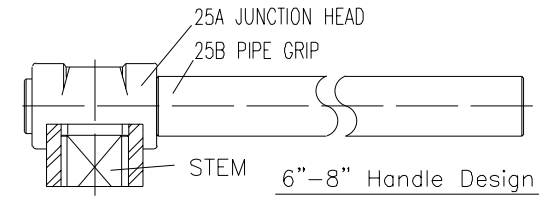
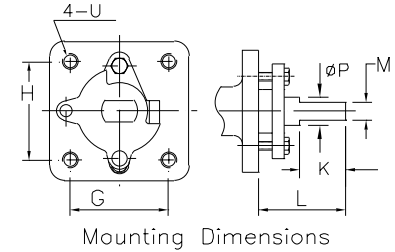
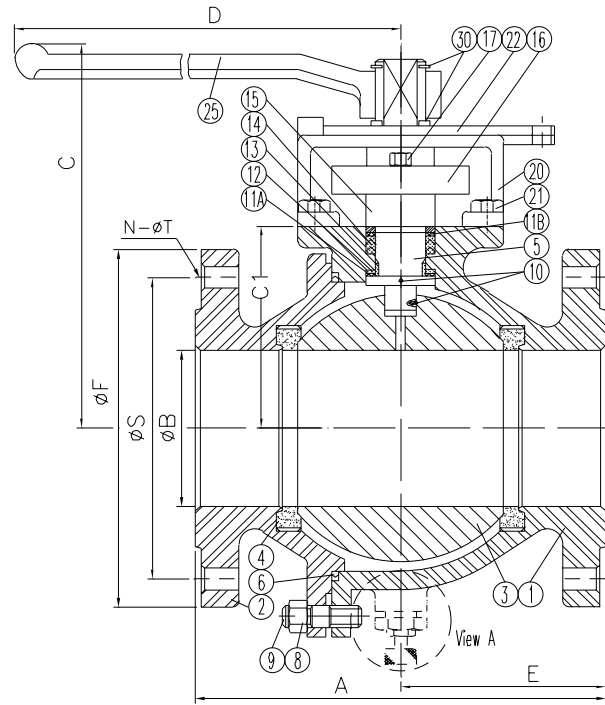
TEL: 832-912-2300  
FAX: 832-912-2301

SERIES #  
F30  
SIZE :  
1/2"-2"

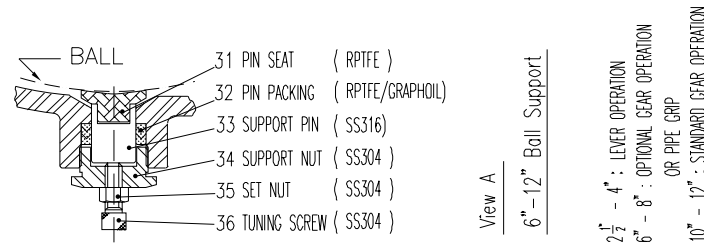
DRAWING TITLE : 1/2" - 2" F30 Assembly Drawing

SCALE : N.T.S.	DRAWN BY : MG	REV. LEVEL
DATE : April 23, 2003	APPROVED BY : WSB	00
CUSTOMER :	DRAWING NO. :	F30-SD-01

BILL OF MATERIAL			F15-316	F15-WCB
NO.	PART NAME	QTY	STAINLESS STEEL	CARBON STEEL
30	SNAP RING	2	Nickel Plated Carbon Steel	
25	HANDLE	1	DUCTILE IRON	
22	TRAVEL STOPPER	1	SS304	Zinc Plated C.S.
21	HOUSING BOLT	4	SS304	Carbon Steel
20	STOP HOUSING	1	A351-CF8	A216-WCB
17	GLAND BLOT	2	SS304	Carbon Steel
16	GLAND	1	A351-CF8	A216-WCB
15	PK GLD SLEEVE	1	SS304	Carbon Steel
14	PACKING	3~4	GRAPHITE	
13	STEM BEARING	1	RPTFE	
12	THRUST WASHER	1	RPTFE	
11B	PACKING PROTECTOR	1	50% SS316 + 50% PIPE	
11A	WASHER PROTECTOR	1	50% SS316 + 50% PIPE	
10	ANTI-STATIC	2	SS316	
9	BODY STUD	4~16	ASTM A193 B8	ASTM A193 B7
8	BODY NUT	4~16	ASTM A194 GR. 8	ASTM A194 GR. 2H
6	GASKET	1	SPRAL WOUND WIRE(316/GRAPHITE)	
5	STEM	1	ASTM A479 Gr. 316	
4	SEAT	2	RPTFE	
3	BALL	1	ASTM A351 CF8M	
2	CAP	1	A351-CF8M	A216-WCB
1	BODY	1	A351-CF8M	A216-WCB

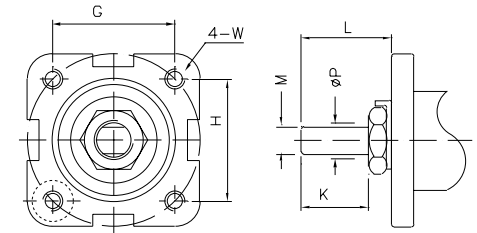


Size	2 1/2"	3"	4"	6"	8"	10"	12"
A	9.50	11.12	12.00	15.88	19.75	22.38	25.50
B	2.56	2.99	4.00	5.98	7.87	9.84	11.8
C	6.22	6.535	7.20	11.22	12.72		
D	15.35	15.35	15.35	38.98	38.98		
C1	3.386	3.720	4.350	7.185	8.642	9.685	11.26
E	4.18	5.57	5.96	7.60	9.33	11.18	12.80
F	7.50	8.25	10.0	12.5	15.0	17.5	20.5
G	1.874	1.874	1.874	3.375	3.375	4.528	4.528
H	3.543	3.543	3.543	3.375	3.375	4.528	4.528
K	1.752	1.752	1.752	1.614	1.614	2.146	2.146
L	3.071	3.071	3.071	3.425	3.415	3.819	3.819
M	0.669	0.669	0.669	1.024	1.024	1.378	1.378
N	8	8	8	12	12	16	16
P	1.102	1.102	1.102	1.713	1.713	2.165	2.165
S	5.88	6.62	7.88	10.62	13.0	15.25	17.75
T	0.88	0.88	0.88	0.88	1.00	1.12	1.25
U	1/2"-13UNC					5/8"-11UNC	

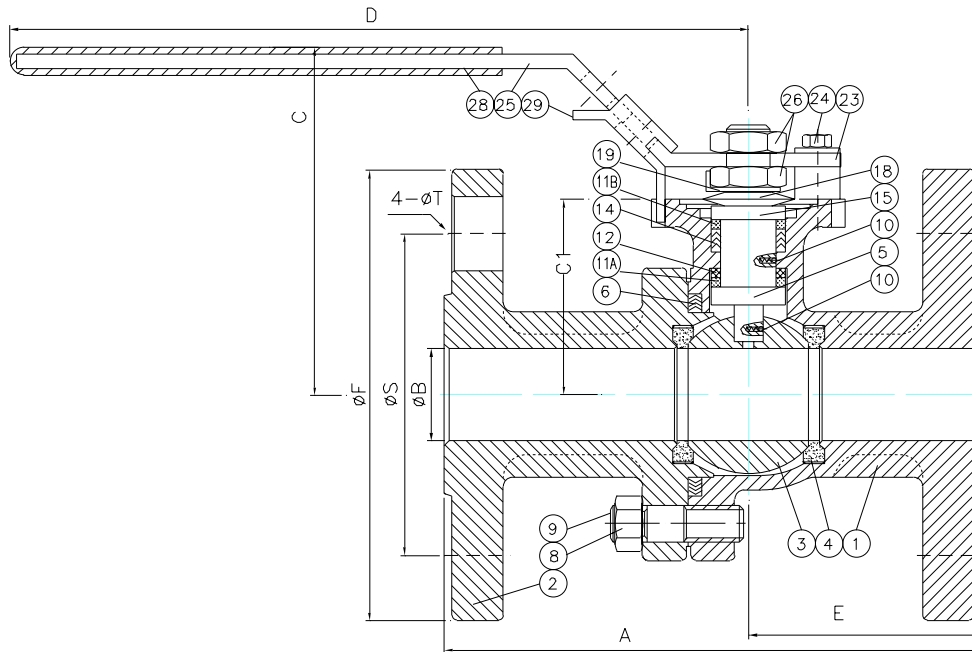


<b>FLOW-TEK, INC.</b> 11850 Tanner Road Houston, Texas 77041 TEL: 832-912-2300 FAX: 832-912-2301		SERIES # F30
		SIZE : 2-1/2"-12"
DRAWING TITLE : 2-1/2"-12" F30 Assembly Drawing (Fire Safe)		
SCALE : NTS	DRAWN BY : MG	REV. LEVEL
DATE : Feb. 13, 2004	APPROVED BY : WSB	00
CUSTOMER :	DRAWING NO. :	F30FS-SD-02

SIZE	A	B	C	D	E	C1	F	G	H	K	L	M	N	P	S	T	W
1/2"	5.50	0.591	2.60	6.50	2.44	1.575	3.75	1.169	1.169	0.315	0.551	0.250	4	0.366	2.62	0.62	10-24UNC
3/4"	6.00	0.787	2.91	6.50	2.72	1.673	4.62	1.169	1.169	0.315	0.551	0.250	4	0.366	3.25	0.75	10-24UNC
1"	6.50	0.984	3.43	7.87	2.91	2.047	4.88	1.394	1.394	0.433	0.748	0.315	4	0.429	3.50	0.75	1/4-20UNC
1 1/4"	7.00	1.260	3.62	7.87	2.95	2.205	5.25	1.394	1.394	0.433	0.748	0.315	4	0.429	3.88	0.75	1/4-20UNC
1 1/2"	7.50	1.496	4.23	9.84	3.27	2.598	6.12	1.949	1.949	0.551	0.906	0.374	4	0.618	4.50	0.88	5/16-18UNC
2"	8.50	1.969	4.53	10.43	3.94	2.953	6.50	1.949	1.949	0.551	0.906	0.374	8	0.618	5.00	0.75	5/16-18UNC



Mounting Dimension



BILL OF MATERIAL			F30-316	F30-WCB
NO	PART NAME	QTY	STAINLESS STEEL	CARBON STEEL
29	LOCATING LOCK	1	SS304	
28	HANDLE SLEEVE	1	VINYL	
26	HANDLE NUT	2	SS304	
25	HANDLE	1	SS304	
24	VALVE STOP BOLT	1	SS304	
23	VALVE STOP SET SLEEVE	1	SS304	
19	TAB WASHER	1	SS304	
18	BELLEVILLE WASHER	2	SS301	
15	PK GLD SLEEVE	1	SS304	
14	STEM PACKING	3	GRAPHITE	
12	THRUST WASHER	1	50% SS316 + 50% PTFE	
11B	PACKING PROTECTOR	1	PEEK	
11A	WASHER PROTECTOR	1	PEEK	
10	ANTI-STATIC	2	SS316	
9	BODY STUD	4	ASTM A193 B8	ASTM A193 B7
8	BODY NUT	4	ASTM A194 GR.8	ASTM A194 GR.2H
6	BODY GASKET	1	SPIRAL WOUND WIRE (316/GRAPHITE)	
5	STEM	1	ASTM A479 Gr. 316	
4	SEAT	2	RPTFE	
3	BALL	1	ASTM A351 CF8M	
2	CAP	1	A351-CF8M	A216-WCB
1	BODY	1	A351-CF8M	A216-WCB

FLOW-TEK, INC.

11850 Tanner Road  
Houston, Texas 77041

TEL: 832-912-2300  
FAX: 832-912-2301

SERIES #  
F30  
SIZE :  
1/2"-2"

DRAWING TITLE : 1/2"- 2" F30 Assembly Drawing (Fire Safe)

SCALE : N.T.S.

DRAWN BY : MG

REV. LEVEL

DATE : Feb. 13, 2004

APPROVED BY : WSB

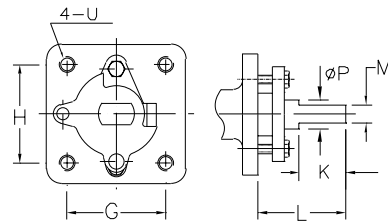
00

CUSTOMER :

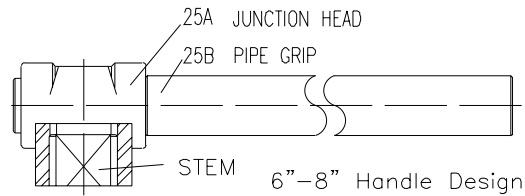
DRAWING NO. :

F30FS-SD-01

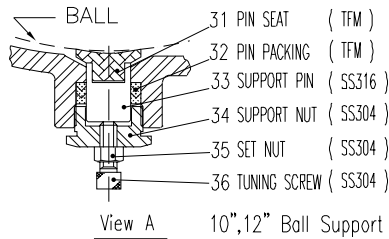
BILL OF MATERIAL		F15-316	F15-WCB	
NO.	PART NAME	QTY	STAINLESS STEEL	CARBON STEEL
30	SNAP RING	2	Nickel Plated	Carbon Steel
25	HANDLE	1	DUCTILE IRON	
22	TRAVEL STOPPER	1	SS304	Zinc Plated C.S.
21	HOUSING BOLT	4	SS304	Carbon Steel
20	STOP HOUSING	1	A351-CF8	A216-WCB
17	GLAND BLOT	2	SS304	Carbon Steel
16	GLAND	1	A351-CF8	A216-WCB
15	PK GLD SLEEVE	1	SS304	Carbon Steel
14	PACKING	3~4	15% RPTFE	
13	STEM BEARING	1	15% RPTFE	
12	THRUST WASHER	1	15% RPTFE	
11B	PACKING PROTECTOR	1	50% SS316 + 50% PTFE	
11A	WASHER PROTECTOR	1	50% SS316 + 50% PTFE	
10	ANTI-STATIC	2	SS316	
9	BODY STUD	4~16	ASTM A193 B8	ASTM A193 B7
8	BODY NUT	4~16	ASTM A194 GR. 8	ASTM A194 GR. 2H
6	GASKET	1	SPRIAL WOUND WIRE(316/GRAPHITE)	
5	STEM	1	ASTM A479 Gr. 316	
4	SEAT	2	15% RPTFE	
3	BALL	1	A351-CF8M	
2	CAP	1	A351-CF8M	A216-WCB
1	BODY	1	A351-CF8M	A216-WCB



Mounting Dimensions

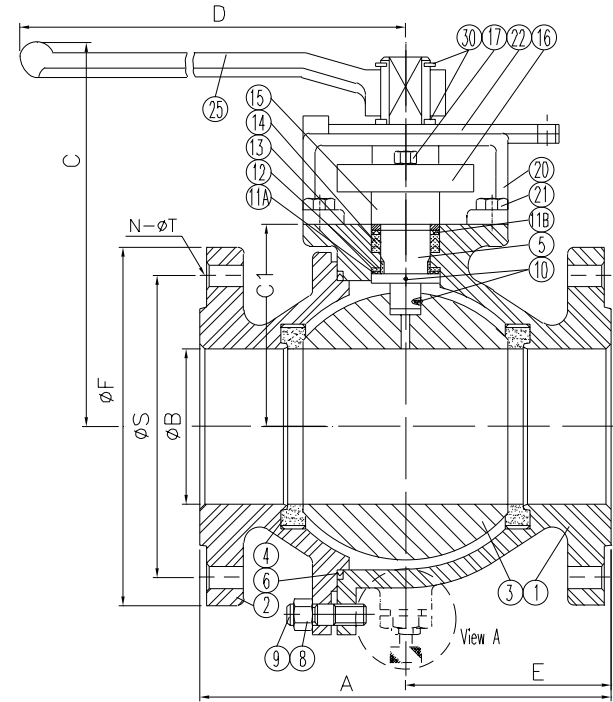


SIZE	2 1/2"	3"	4"	6"	8"	10"	12"
A	7.50	8.00	9.00	15.50	18.00	21.0	24.0
B	2.559	2.992	4.016	5.984	7.874	9.843	11.811
C	6.22	6.535	7.20	11.22	11.58	13.70	15.28
D	15.35	15.35	15.35	38.98	38.98	38.98	38.98
E	3.08	3.74	4.47	7.62	8.35	10.47	12.01
C1	3.39	3.66	4.39	7.17	7.60	9.88	11.46
F	7.00	7.50	9.00	11.0	13.50	16.0	19.0
G	1.874	1.874	1.874	3.375	3.375	4.528	4.528
H	3.543	3.543	3.543	3.375	3.375	4.528	4.528
K	1.752	1.752	1.752	1.614	2.126	2.165	2.165
L	3.071	3.071	3.071	3.425	3.858	3.740	3.740
M	0.669	0.669	0.669	1.020	1.020	1.378	1.378
N	4	4	8	8	8	12	12
P	1.102	1.102	1.102	1.713	1.713	1.969	1.969
S	5.50	6.00	7.50	9.50	11.75	14.25	17.0
T	0.75	0.75	0.75	0.88	0.88	1.00	1.00
U	1/2-13UNC			5/8-11UNC			



View A 10",12" Ball Support

2 1/2" - 4" : LEVER OPERATION  
 6" - 8" : OPTIONAL GEAR OPERATION  
 OR PIPE GRIP  
 10" - 12" : STANDARD GEAR OPERATION



FLOW-TEK, INC.

11850 Tanner Road  
 Houston, Texas 77041

TEL: 832-912-2300  
 FAX: 832-912-2301

SERIES #  
 F15  
 SIZE :  
 2-1/2"-12"

DRAWING TITLE : 2-1/2"-12" F15 Sales Drawing

SCALE : NTS

DRAWN BY : MG

REV. LEVEL

DATE : July 22, 2003

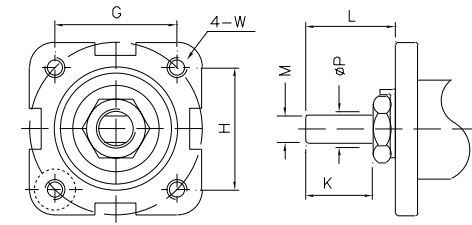
APPROVED BY : WSB

00

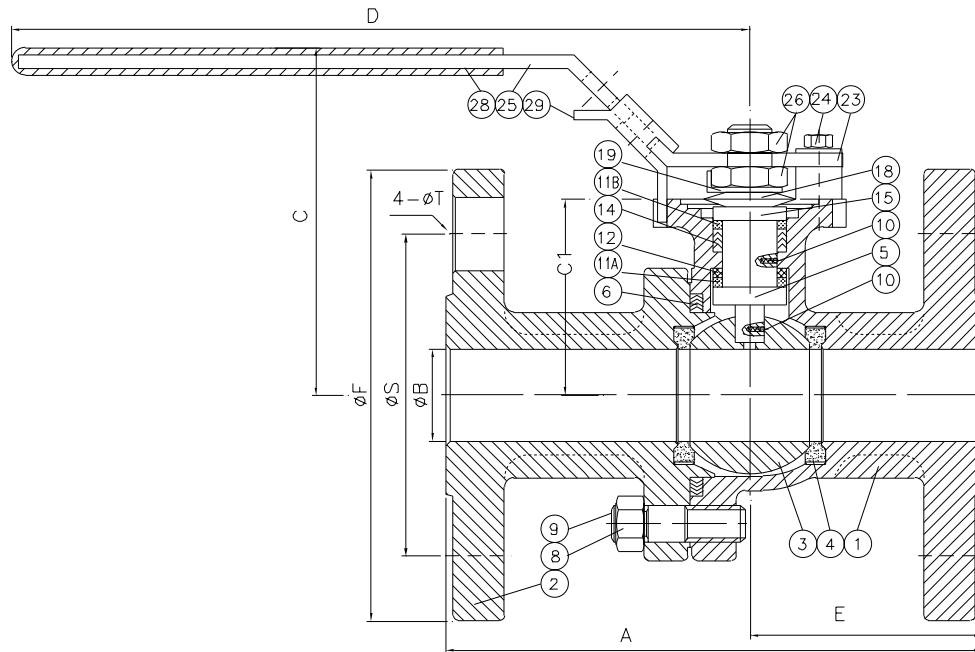
CUSTOMER :

DRAWING NO. : F15-SD-02

SIZE	A	B	C	D	E	C1	F	G	H	K	L	M	P	S	T	W
1/2"	4.25	0.625	2.60	6.50	1.79	1.54	3.50	1.169	1.169	0.315	0.551	0.250	0.375	2.38	0.62	10-24UNC
3/4"	4.62	0.787	2.91	6.50	2.01	1.67	3.88	1.169	1.169	0.315	0.551	0.250	0.375	2.75	0.62	10-24UNC
1"	5.00	1.000	3.43	7.87	2.13	2.05	4.25	1.392	1.392	0.433	0.748	0.315	0.438	3.12	0.62	1/4-20UNC
1 1/4"	5.50	1.260	3.62	7.87	2.20	2.20	4.62	1.392	1.392	0.433	0.748	0.315	0.438	3.50	0.62	1/4-20UNC
1 1/2"	6.50	1.496	4.13	9.84	2.76	2.60	5.00	1.949	1.949	0.551	0.906	0.374	0.625	3.88	0.62	5/16-18UNC
2"	7.00	2.000	4.53	10.43	3.07	2.95	6.00	1.949	1.949	0.551	0.906	0.374	0.625	4.75	0.75	5/16-18UNC



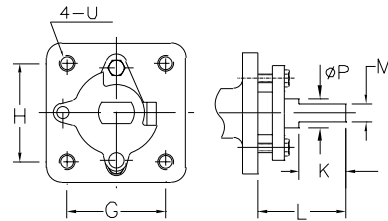
Mounting Dimension



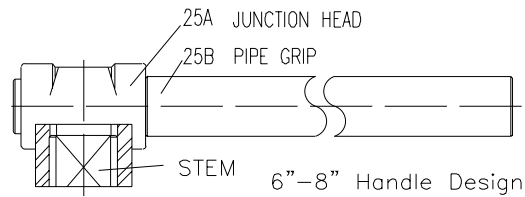
BILL OF MATERIAL			F15-316	F15-WCB
NO	PART NAME	Q'TY	STAINLESS STEEL	CARBON STEEL
29	LOCATING LOCK	1	SS304	
28	HANDLE SLEEVE	1	VINYL	
26	HANDLE NUT	2	SS304	
25	HANDLE	1	SS304	
24	VALVE STOP BOLT	1	SS304	
23	VALVE STOP SET SLEEVE	1	SS304	
19	TAB WASHER	1	SS304	
18	BELLEVILLE WASHER	2	SS301	
15	PK GLD SLEEVE	1	SS304	
14	STEM PACKING	3	15% RPTFE	
12	THRUST WASHER	1	50% SS316 + 50% PTFE	
11B	PACKING PROTECTOR	1	PEEK	
11A	WASHER PROTECTOR	1	PEEK	
10	ANTI-STATIC	2	SS316	
9	BODY STUD	4	A193 B8	A193 B7
8	BODY NUT	4	A194 GR.8	A194 GR.2H
6	BODY GASKET	1	SPIRAL WOUND WIRE (316/GRAPHITE)	
5	STEM	1	ASTM A479 Gr. 316	
4	SEAT	2	15% RPTFE	
3	BALL	1	A351-CF8M	
2	CAP	1	A351-CF8M	A216-WCB
1	BODY	1	A351-CF8M	A216-WCB

<b>FLOW-TEK, INC.</b>		SERIES # F15
11850 Tanner Road Houston, Texas 77041	TEL: 832-912-2300 FAX: 832-912-2301	SIZE : 1/2"-2"
DRAWING TITLE : 1/2"- 2" F15 Sales Drawing		
SCALE : N.T.S.	DRAWN BY : MG	REV. LEVEL
DATE : April 15, 2003	APPROVED BY : WSB	00
CUSTOMER :	DRAWING NO. : F15-SD-01	

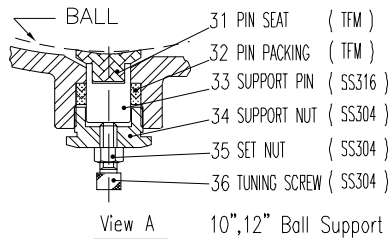
BILL OF MATERIAL		F15-316	F15-WCB	
NO.	PART NAME	QTY	STAINLESS STEEL	CARBON STEEL
30	SNAP RING	2	Nickel Plated	Carbon Steel
25	HANDLE	1	DUCTILE IRON	
22	TRAVEL STOPPER	1	SS304	Zinc Plated C.S.
21	HOUSING BOLT	4	SS304	Carbon Steel
20	STOP HOUSING	1	A351-CF8	A216-WCB
17	GLAND BLOT	2	SS304	Carbon Steel
16	GLAND	1	A351-CF8	A216-WCB
15	PK GLD SLEEVE	1	SS304	Carbon Steel
14	PACKING	3~4	GRAPHITE	
13	STEM BEARING	1	15% RPTFE	
12	THRUST WASHER	1	15% RPTFE	
11B	PACKING PROTECTOR	1	50% SS316 + 50% PTFE	
11A	WASHER PROTECTOR	1	50% SS316 + 50% PTFE	
10	ANTI-STATIC	2	SS316	
9	BODY STUD	4~16	ASTM A193 B8	ASTM A193 B7
8	BODY NUT	4~16	ASTM A194 GR. 8	ASTM A194 GR. 2H
6	GASKET	1	SPRIAL WOUND WIRE(316/GRAPHITE)	
5	STEM	1	ASTM A479 Gr. 316	
4	SEAT	2	15% RPTFE	
3	BALL	1	A351-CF8M	
2	CAP	1	A351-CF8M	A216-WCB
1	BODY	1	A351-CF8M	A216-WCB



Mounting Dimensions

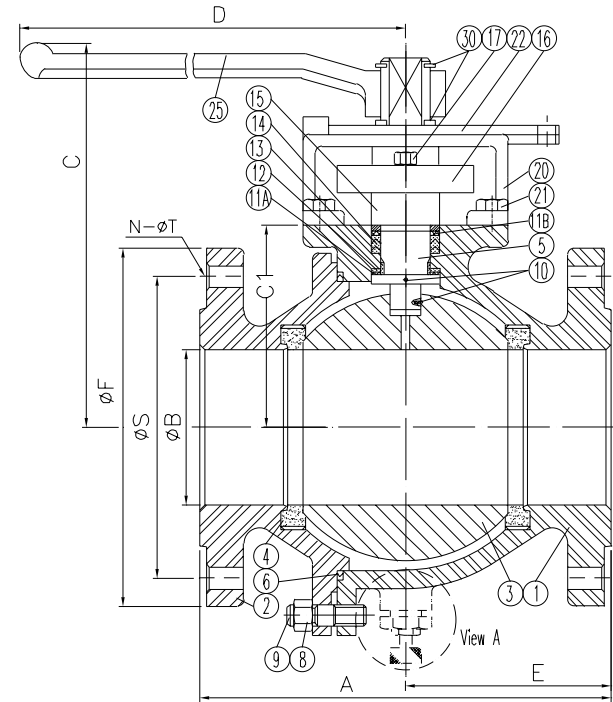


SIZE	2 1/2"	3"	4"	6"	8"	10"	12"
A	7.50	8.00	9.00	15.50	18.00	21.0	24.0
B	2.559	2.992	4.016	5.984	7.874	9.843	11.811
C	6.22	6.535	7.20	11.22	11.58	13.70	15.28
D	15.35	15.35	15.35	38.98	38.98	38.98	38.98
E	3.08	3.74	4.47	7.62	8.35	10.47	12.01
C1	3.39	3.66	4.39	7.17	7.60	9.88	11.46
F	7.00	7.50	9.00	11.0	13.50	16.0	19.0
G	1.874	1.874	1.874	3.375	3.375	4.528	4.528
H	3.543	3.543	3.543	3.375	3.375	4.528	4.528
K	1.752	1.752	1.752	1.614	2.126	2.165	2.165
L	3.071	3.071	3.071	3.425	3.858	3.740	3.740
M	0.669	0.669	0.669	1.020	1.020	1.378	1.378
N	4	4	8	8	8	12	12
P	1.102	1.102	1.102	1.713	1.713	1.969	1.969
S	5.50	6.00	7.50	9.50	11.75	14.25	17.0
T	0.75	0.75	0.75	0.88	0.88	1.00	1.00
U	1/2-13UNC			5/8-11UNC			



View A 10",12" Ball Support

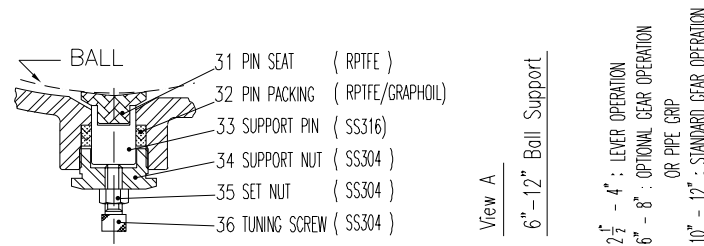
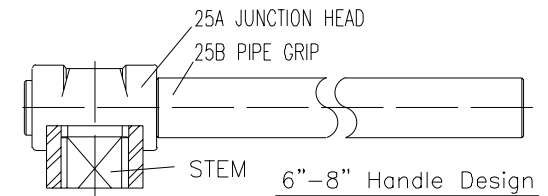
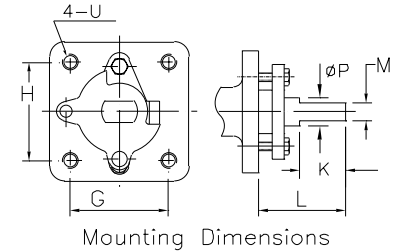
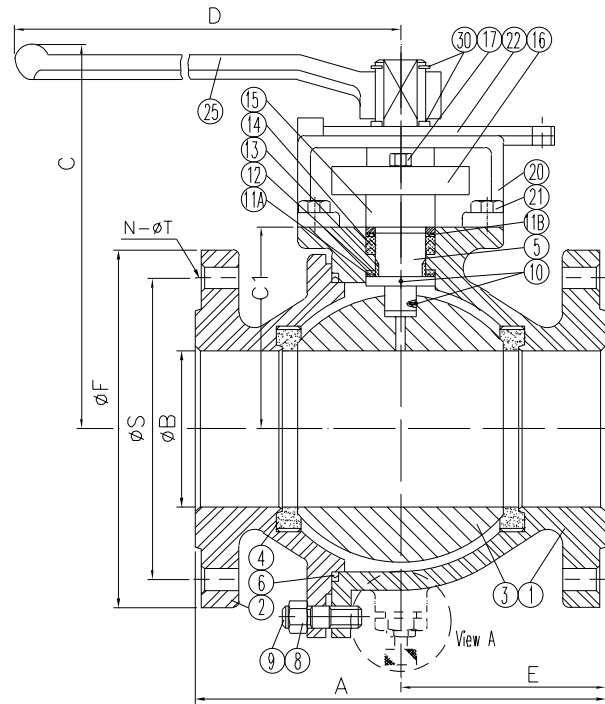
2 1/2" - 4" : LEVER OPERATION  
6" - 8" : OPTIONAL GEAR OPERATION  
OR PIPE GRIP  
10" - 12" : STANDARD GEAR OPERATION



<b>FLOW-TEK, INC.</b>		SERIES # F15
11850 Tanner Road Houston, Texas 77041		TEL: 832-912-2300 FAX: 832-912-2301
DRAWING TITLE : 2-1/2"-12" F15 Sales Drawing (Fire Safe)		SIZE : 2-1/2"-12"
SCALE : NTS	DRAWN BY : MG	REV. LEVEL
DATE : Feb. 13, 2004	APPROVED BY : WSB	00
CUSTOMER :	DRAWING NO. : F15FS-SD-02	

BILL OF MATERIAL			F15-316	F15-WCB
NO.	PART NAME	QTY	STAINLESS STEEL	CARBON STEEL
30	SNAP RING	2	Nickel Plated	Carbon Steel
25	HANDLE	1	DUCTILE	IRON
22	TRAVEL STOPPER	1	SS304	Zinc Plated C.S.
21	HOUSING BOLT	4	SS304	Carbon Steel
20	STOP HOUSING	1	A351-CF8	A216-WCB
17	GLAND BLOT	2	SS304	Carbon Steel
16	GLAND	1	A351-CF8	A216-WCB
15	PK GLD SLEEVE	1	SS304	Carbon Steel
14	PACKING	3~4	RPTFE	
13	STEM BEARING	1	RPTFE	
12	THRUST WASHER	1	RPTFE	
11B	PACKING PROTECTOR	1	50% SS316 + 50% PTFE	
11A	WASHER PROTECTOR	1	50% SS316 + 50% PTFE	
10	ANTI-STATIC	2	SS316	
9	BODY STUD	4~16	ASTM A193 B8	ASTM A193 B7
8	BODY NUT	4~16	ASTM A194 GR. 8	ASTM A194 GR. 2H
6	GASKET	1	SPRAL WOUND WIRE(316/GRAPHITE)	
5	STEM	1	ASTM A479 Gr. 316	
4	SEAT	2	RPTFE	
3	BALL	1	ASTM A351 CF8M	
2	CAP	1	A351-CF8M	A216-WCB
1	BODY	1	A351-CF8M	A216-WCB

Size	2 1/2"	3"	4"	6"	8"	10"	12"
A	9.50	11.12	12.00	15.88	19.75	22.38	25.50
B	2.56	2.99	4.00	5.98	7.87	9.84	11.8
C	6.22	6.535	7.20	11.22	12.72		
D	15.35	15.35	15.35	38.98	38.98		
C1	3.386	3.720	4.350	7.185	8.642	9.685	11.26
E	4.18	5.57	5.96	7.60	9.33	11.18	12.80
F	7.50	8.25	10.0	12.5	15.0	17.5	20.5
G	1.874	1.874	1.874	3.375	3.375	4.528	4.528
H	3.543	3.543	3.543	3.375	3.375	4.528	4.528
K	1.752	1.752	1.752	1.614	1.614	2.146	2.146
L	3.071	3.071	3.071	3.425	3.415	3.819	3.819
M	0.669	0.669	0.669	1.024	1.024	1.378	1.378
N	8	8	8	12	12	16	16
P	1.102	1.102	1.102	1.713	1.713	2.165	2.165
S	5.88	6.62	7.88	10.62	13.0	15.25	17.75
T	0.88	0.88	0.88	0.88	1.00	1.12	1.25
U	1/2"-13UNC					5/8"-11UNC	



<b>FLOW-TEK, INC.</b> 11850 Tanner Road Houston, Texas 77041 TEL: 832-912-2300 FAX: 832-912-2301		SERIES # F30
		SIZE : 2-1/2"-12"
DRAWING TITLE : 2-1/2"-12" F30 Assembly Drawing		
SCALE : NTS	DRAWN BY : MG	REV. LEVEL
DATE : April 23, 2003	APPROVED BY : WSB	00
CUSTOMER :	DRAWING NO. :	F30-SD-02