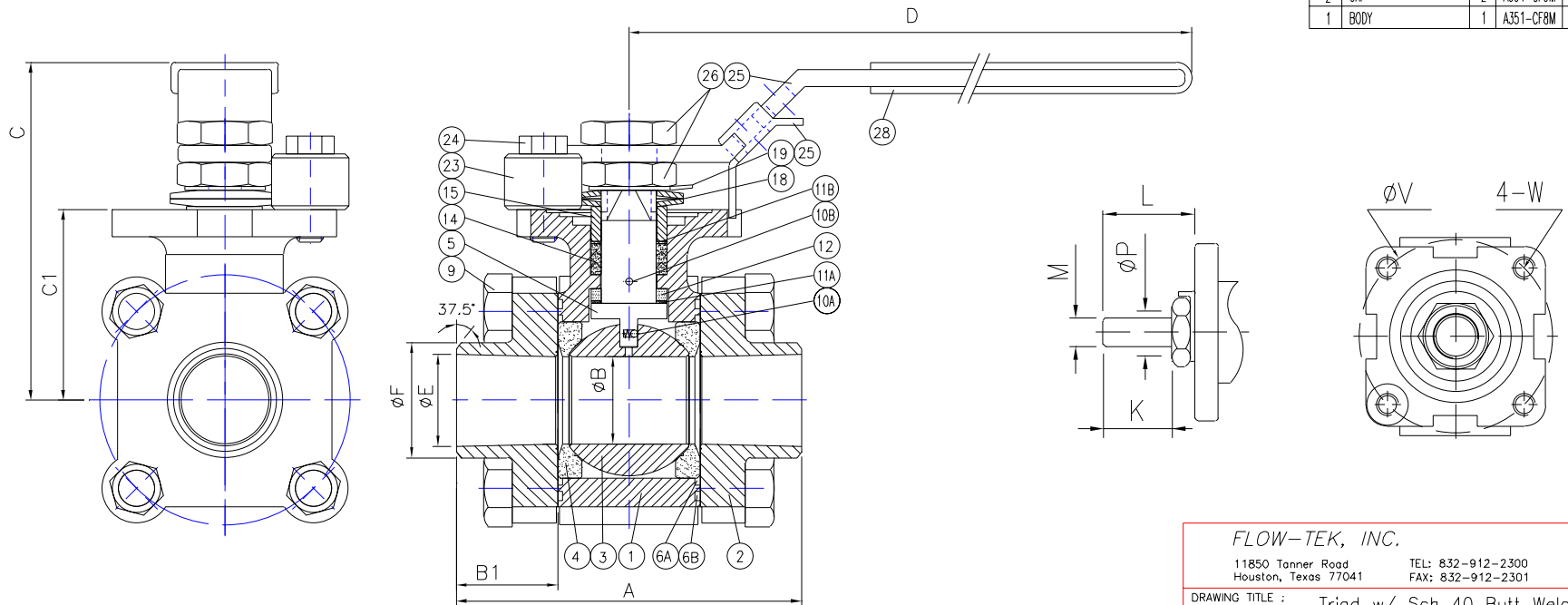


SIZE	A	B	C	B1	C1	D	E	F	K	L	M	P	V	W
1/2"	2.99	0.56	2.83	1.01	1.45	6.50	0.62	0.84	0.315	0.551	0.250	0.374	1.654	#10-24UNC
3/4"	3.31	0.81	3.03	1.03	1.63	6.50	0.82	1.05	0.315	0.551	0.250	0.374	1.654	#10-24UNC
1"	3.94	1.00	3.82	1.16	2.18	9.84	1.05	1.31	0.512	0.906	0.374	0.622	2.756	5/16-18UNC
1-1/4"	4.33	1.26	4.02	1.21	2.36	9.84	1.38	1.66	0.551	0.925	0.374	0.622	2.756	5/16-18UNC
1-1/2"	5.04	1.50	4.29	1.41	2.68	10.43	1.61	1.90	0.669	1.043	0.472	0.748	2.756	5/16-18UNC
2"	5.71	2.00	4.65	1.48	3.03	10.43	2.07	2.38	0.728	1.102	0.472	0.748	2.756	5/16-18UNC

BILL OF MATERIAL

NO.	PART NAME	Qty	FP3000	FP2000
29	LOCATING LOCK	1	SS304	
28	PLASTIC HANDLE SLEEVE	1	VNVL	
26	THIN NUT	2	SS304	
25	LEVER HANDLE	1	SS304	
24	VALVE STOP: BOLT	1	SS304	
23	VALVE STOP: SET SLEEVE	1	SS304	
19	LOCK WASHER	1	SS304	
18	DISK SPRING WASHER	2	SS301	
15	PK GLD SLEEVE	1	SS304	
14	STEM PACKING	1	Graphite	
12	THRUST WASHER	1	50% PTFE + 50% 316	
11B	PACKING PROTECTOR	1	PEEK	
11A	WASHER PROTECTOR	1	PEEK	
10A/B	ANTI-STATIC	1/1	SS316	
9	BODY BOLT	Note	ASTM A193 B8	
6B	GASKET(2)	2	GRAPHITE	
6A	GASKET(1)	2	TFM-1600	
5	STEM	1	ASTM A479 Gr. 316	
4	SEAT	2	TFM-1600	
3	BALL	1	A351-CF8M / A479 Gr. 316	
2	CAP	2	A351-CF3M / A216-WCB	
1	BODY	1	A351-CF8M / A216-WCB	

Note:
0.5"-1.5": 8
2": 12



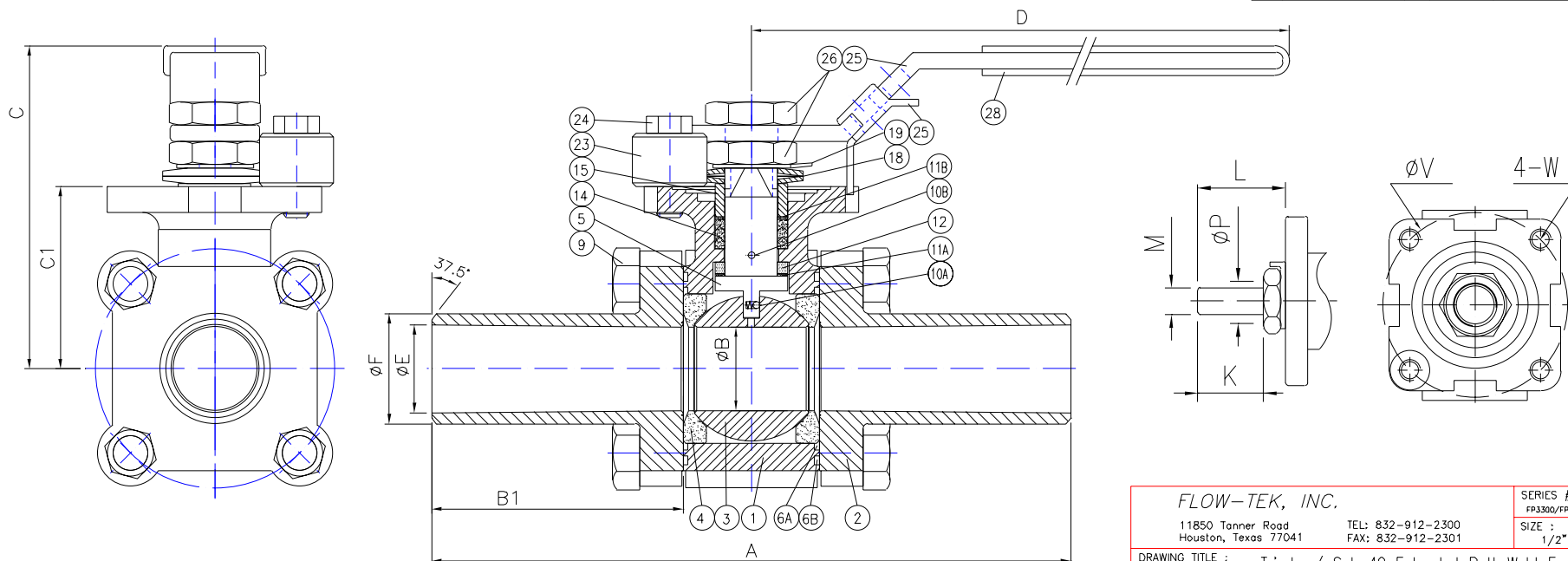
FLOW-TEK, INC.		SERIES # FP3300/FP2300
11850 Tanner Road Houston, Texas 77041	TEL: 832-912-2300 FAX: 832-912-2301	SIZE : 1/2"-2"
DRAWING TITLE : Triad w/ Sch 40 Butt Weld End		
SCALE : NTS	DRAWN BY : MG	REV. LEVEL
DATE : Feb. 05, 2004	APPROVED BY : WSB	00
CUSTOMER :	DRAWING NO. :	FP0403(0408)-SD

SIZE	A	B	C	B1	C1	D	E	F	K	L	M	P	V	W
1/2"	8.98	0.56	2.83	4.00	1.45	6.50	0.62	0.84	0.315	0.551	0.250	0.374	1.654	#10-24UNC
3/4"	9.24	0.81	3.03	4.00	1.63	6.50	0.82	1.05	0.315	0.551	0.250	0.374	1.654	#10-24UNC
1"	9.62	1.00	3.82	4.00	2.18	9.84	1.05	1.31	0.512	0.906	0.374	0.622	2.756	5/16-18UNC
1-1/4"	9.91	1.26	4.02	4.00	2.36	9.84	1.38	1.66	0.551	0.925	0.374	0.622	2.756	5/16-18UNC
1-1/2"	10.22	1.50	4.29	4.00	2.68	10.43	1.61	1.90	0.669	1.043	0.472	0.748	2.756	5/16-18UNC
2"	10.76	2.00	4.65	4.00	3.03	10.43	2.07	2.38	0.728	1.102	0.472	0.748	2.756	5/16-18UNC

BILL OF MATERIAL

NO.	PART NAME	Qty	FP3000	FP2000
29	LOCATING LOCK	1	SS304	
28	PLASTIC HANDLE SLEEVE	1	VINYL	
26	THIN NUT	2	SS304	
25	LEVER HANDLE	1	SS304	
24	VALVE STOP: BOLT	1	SS304	
23	VALVE STOP: SET SLEEVE	1	SS304	
19	LOCK WASHER	1	SS304	
18	DISK SPRING WASHER	2	SS301	
15	PK. GLD SLEEVE	1	SS304	
14	STEM PACKING	1	Graphite	
12	THRUST WASHER	1	50% PTFE + 50% 316	
11B	PACKING PROTECTOR	1	PEEK	
11A	WASHER PROTECTOR	1	PEEK	
10A/B	ANTI-STATIC	1/1	SS316	
9	BODY BOLT	Note	ASTM A193 B8	
6B	GASKET(2)	2	GRAPHITE	
6A	GASKET(1)	2	TFM-1600	
5	STEM	1	ASTM A479 Gr. 316	
4	SEAT	2	TFM-1600	
3	BALL	1	A351-CF8M / A479 Gr. 316	
2	CAP	2	A351-CF3M A216-WCB	
1	BODY	1	A351-CF8M A216-WCB	

Note:
0.5"-1.5": 8
2": 12



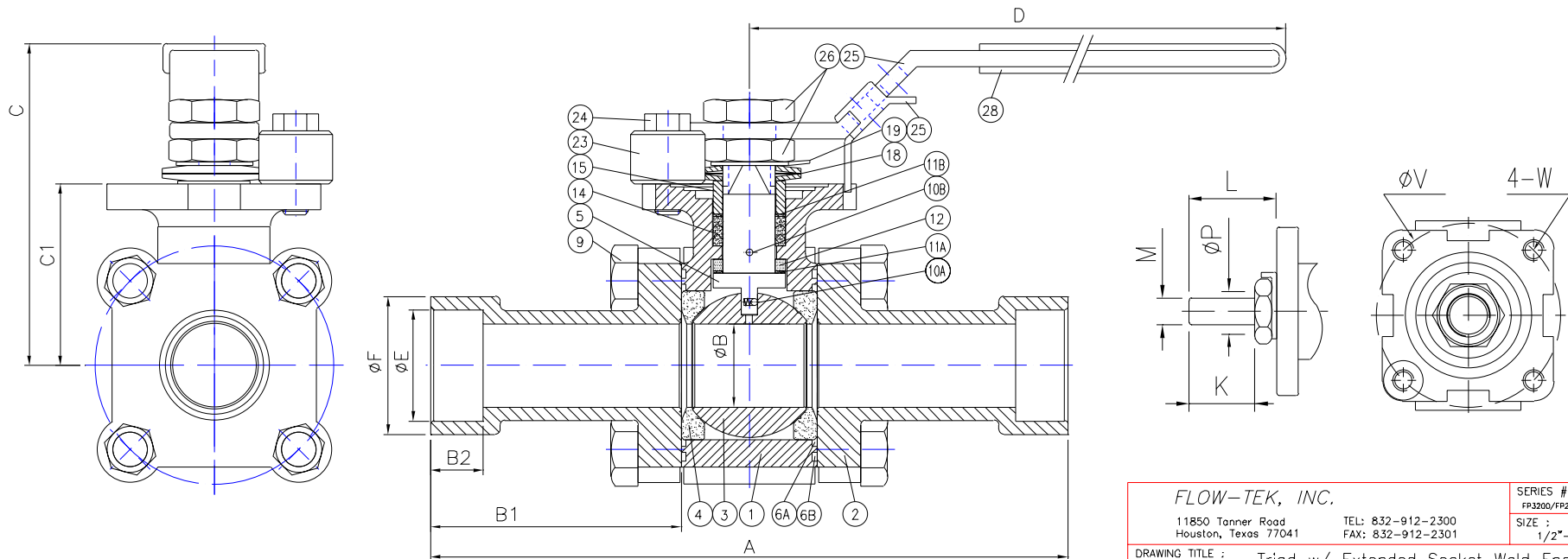
FLOW-TEK, INC.		SERIES # FP3300/FP2300
11850 Tanner Road Houston, Texas 77041	TEL: 832-912-2300 FAX: 832-912-2301	SIZE : 1/2"-2"
DRAWING TITLE : Triod w/ Sch 40 Extended Butt Weld End		
SCALE : NTS	DRAWN BY : MG	REV. LEVEL 00
DATE : Feb. 05, 2004	APPROVED BY : WSB	
CUSTOMER :	DRAWING NO. : FP0303(0308)-ExtendedBW-SD	

SIZE	A	B	C	B1	C1	B2	D	E	F	K	L	M	P	V	W
1/2"	9.98	0.56	2.83	4.00	1.45	0.50	6.50	0.85	1.18	0.315	0.551	0.250	0.374	1.654	#10-24UNC
3/4"	10.37	0.81	3.03	4.00	1.63	0.56	6.50	1.07	1.41	0.315	0.551	0.250	0.374	1.654	#10-24UNC
1"	10.87	1.00	3.82	4.00	2.18	0.63	9.84	1.33	1.73	0.512	0.906	0.374	0.622	2.756	5/16-18UNC
1-1/4"	11.28	1.26	4.02	4.00	2.36	0.69	9.84	1.68	2.10	0.551	0.925	0.374	0.622	2.756	5/16-18UNC
1-1/2"	11.72	1.50	4.29	4.00	2.68	0.75	10.43	1.91	2.36	0.669	1.043	0.472	0.748	2.756	5/16-18UNC
2"	12.50	2.00	4.65	4.00	3.03	0.87	10.43	2.41	2.91	0.728	1.102	0.472	0.748	2.756	5/16-18UNC

BILL OF MATERIAL

NO.	PART NAME	Qty	FP3000	FP2000
29	LOCATING LOCK	1	SS304	
28	PLASTIC HANDLE SLEEVE	1	VMYL	
26	THIN NUT	2	SS304	
25	LEVER HANDLE	1	SS304	
24	VALVE STOP: BOLT	1	SS304	
23	VALVE STOP: SET SLEEVE	1	SS304	
19	LOCK WASHER	1	SS304	
18	DISK SPRING WASHER	2	SS301	
15	PK GLD SLEEVE	1	SS304	
14	STEM PACKING	1	Graphite	
12	THRUST WASHER	1	50% PTFE + 50% 316	
11B	PACKING PROTECTOR	1	PEEK	
11A	WASHER PROTECTOR	1	PEEK	
10A/B	ANTI-STATIC	1/1	SS316	
9	BODY BOLT	Note	ASTM A193 B8	
6B	GASKET(2)	2	GRAPHITE	
6A	GASKET(1)	2	TFM-1600	
5	STEM	1	ASTM A479 Gr. 316	
4	SEAT	2	TFM-1600	
3	BALL	1	A351-CF8M / A479 Gr. 316	
2	CAP	2	A351-CF3M / A216-WCB	
1	BODY	1	A351-CF8M / A216-WCB	

Note:
0.5"-1.5": 8
2": 12



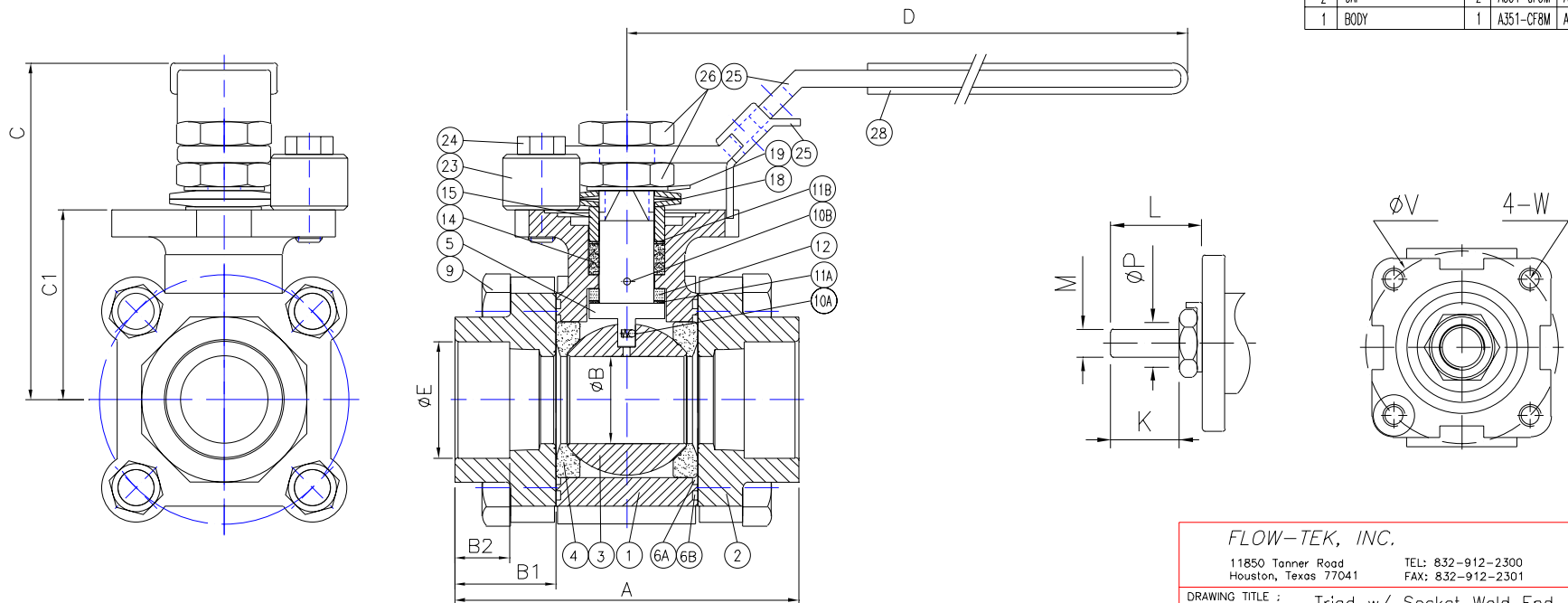
FLOW-TEK, INC. 11850 Tanner Road Houston, Texas 77041		TEL: 832-912-2300 FAX: 832-912-2301	SERIES # FP3200/FP2200 SIZE : 1/2"-2"
DRAWING TITLE : Triad w/ Extended Socket Weld End			
SCALE : NTS	DRAWN BY : MG	REV. LEVEL	
DATE : Feb. 05, 2004	APPROVED BY : WSB	00	
CUSTOMER :	DRAWING NO. : FP0503(0508)-ExtendedSW-SD		

SIZE	A	B	C	B1	C1	B2	D	E	K	L	M	P	V	W
1/2"	2.99	0.56	2.83	1.01	1.45	0.71	6.50	0.85	0.315	0.551	0.250	0.374	1.654	#10-24UNC
3/4"	3.31	0.81	3.03	1.03	1.63	0.73	6.50	1.07	0.315	0.551	0.250	0.374	1.654	#10-24UNC
1"	3.94	1.00	3.82	1.16	2.18	0.87	9.84	1.33	0.512	0.906	0.374	0.622	2.756	5/16-18UNC
1-1/4"	4.33	1.26	4.02	1.21	2.36	0.91	9.84	1.68	0.551	0.925	0.374	0.622	2.756	5/16-18UNC
1-1/2"	5.04	1.50	4.29	1.41	2.68	0.96	10.43	1.91	0.669	1.043	0.472	0.748	2.756	5/16-18UNC
2"	5.71	2.00	4.65	1.48	3.03	1.00	10.43	2.41	0.728	1.102	0.472	0.748	2.756	5/16-18UNC

BILL OF MATERIAL

NO.	PART NAME	Qty	FP3000	FP2000
29	LOCATING LOCK	1	SS304	
28	PLASTIC HANDLE SLEEVE	1	VNVL	
26	THIN NUT	2	SS304	
25	LEVER HANDLE	1	SS304	
24	VALVE STOP: BOLT	1	SS304	
23	VALVE STOP: SET SLEEVE	1	SS304	
19	LOCK WASHER	1	SS304	
18	DISK SPRING WASHER	2	SS301	
15	PK. GLD. SLEEVE	1	SS304	
14	STEM PACKING	1	Graphite	
12	THRUST WASHER	1	50% PTFE + 50% 316	
11B	PACKING PROTECTOR	1	PEEK	
11A	WASHER PROTECTOR	1	PEEK	
10A/B	ANTI-STATIC	1/1	SS316	
9	BODY BOLT	Note	ASTM A193 B8	
6B	GASKET(2)	2	GRAPHITE	
6A	GASKET(1)	2	TFM-1600	
5	STEM	1	ASTM A479 Gr. 316	
4	SEAT	2	TFM-1600	
3	BALL	1	A351-CF8M / A479 Cr. 316	
2	CAP	2	A351-CF3M / A216-WCB	
1	BODY	1	A351-CF8M / A216-WCB	

Note:
0.5"-1.5": 8
2": 12



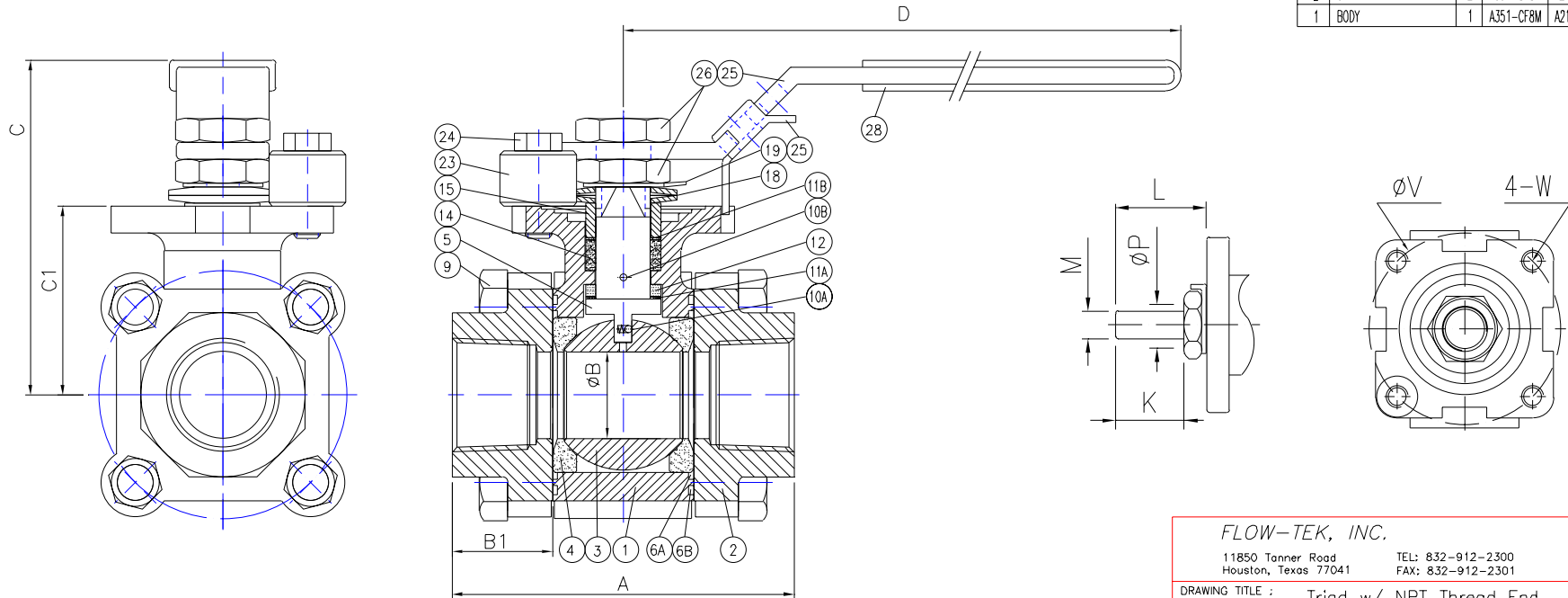
FLOW-TEK, INC.		SERIES # FP3200/FP2200
11850 Tanner Road Houston, Texas 77041		TEL: 832-912-2300 FAX: 832-912-2301
DRAWING TITLE : Triad w/ Socket Weld End		SIZE : 1/2"-2"
SCALE : NTS	DRAWN BY : MG	REV. LEVEL
DATE : Feb. 05, 2004	APPROVED BY : WSB	00
CUSTOMER :	DRAWING NO. :	FP0203(0208)-SD

SIZE	A	B	C	B1	C1	D	K	L	M	P	V	W
1/2"	2.99	0.56	2.83	1.01	1.45	6.50	0.315	0.551	0.250	0.374	1.654	#10-24UNC
3/4"	3.31	0.81	3.03	1.03	1.63	6.50	0.315	0.551	0.250	0.374	1.654	#10-24UNC
1"	3.94	1.00	3.82	1.16	2.18	9.84	0.512	0.906	0.374	0.622	2.756	5/16-18UNC
1-1/4"	4.33	1.26	4.02	1.21	2.36	9.84	0.551	0.925	0.374	0.622	2.756	5/16-18UNC
1-1/2"	5.04	1.50	4.29	1.41	2.68	10.43	0.669	1.043	0.472	0.748	2.756	5/16-18UNC
2"	5.71	2.00	4.65	1.48	3.03	10.43	0.728	1.102	0.472	0.748	2.756	5/16-18UNC

BILL OF MATERIAL

NO.	PART NAME	Qty	FP3000	FP2000
29	LOCATING LOCK	1	SS304	
28	PLASTIC HANDLE SLEEVE	1	VNVL	
26	THIN NUT	2	SS304	
25	LEVER HANDLE	1	SS304	
24	VALVE STOP: BOLT	1	SS304	
23	VALVE STOP: SET SLEEVE	1	SS304	
19	LOCK WASHER	1	SS304	
18	DISK SPRING WASHER	2	SS301	
15	PK GLD SLEEVE	1	SS304	
14	STEM PACKING	1	Graphite	
12	THRUST WASHER	1	50% PTFE + 50% 316	
11B	PACKING PROTECTOR	1	PEEK	
11A	WASHER PROTECTOR	1	PEEK	
10A/B	ANTI-STATIC	1/1	SS316	
9	BODY BOLT	Note	ASTM A193 B8	
6B	GASKET(2)	2	GRAPHITE	
6A	GASKET(1)	2	TFM-1600	
5	STEM	1	ASTM A479 Gr. 316	
4	SEAT	2	TFM-1600	
3	BALL	1	A351-CF8M / A479 Gr. 316	
2	CAP	2	A351-CF8M A216-WCB	
1	BODY	1	A351-CF8M A216-WCB	

Note:
0.5"-1.5": 8
2": 12



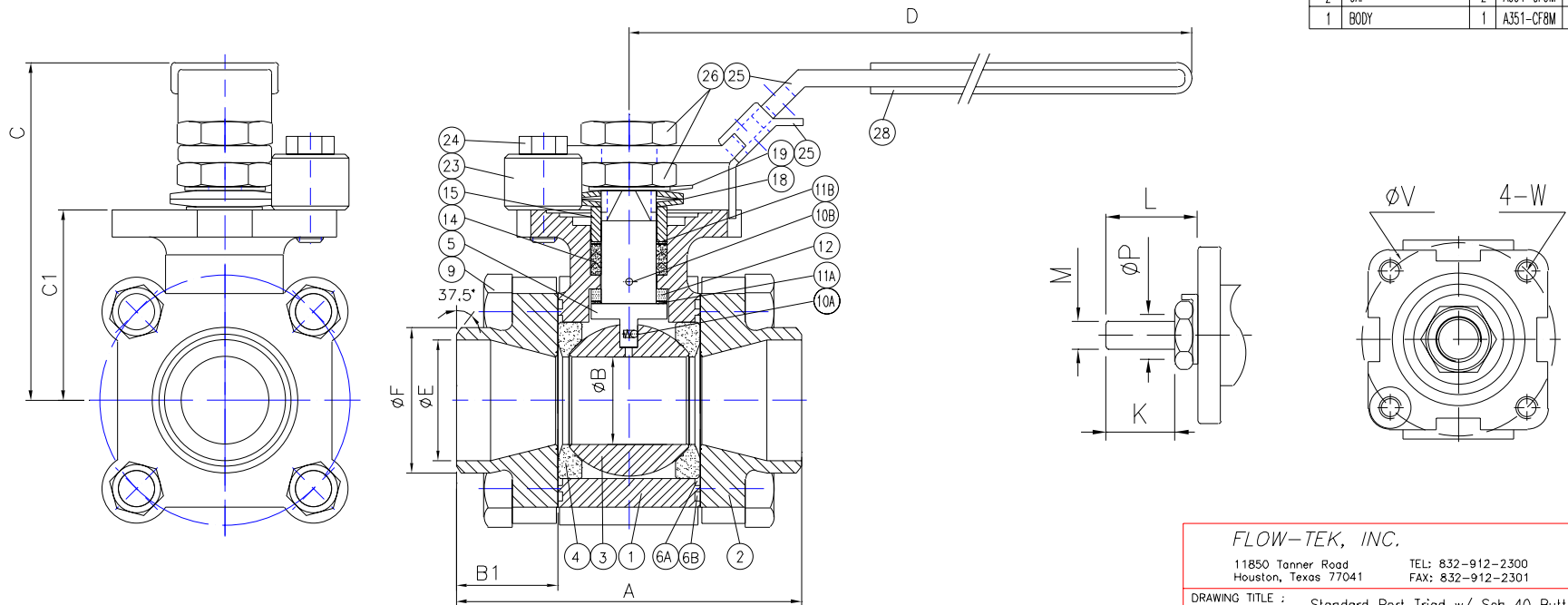
FLOW-TEK, INC. 11850 Tanner Road Houston, Texas 77041		TEL: 832-912-2300 FAX: 832-912-2301	SERIES # FP3100/FP2100 SIZE : 1/2"-2"
DRAWING TITLE : Triad w/ NPT Thread End			
SCALE : NTS	DRAWN BY : MG	REV. LEVEL	
DATE : Feb. 05, 2004	APPROVED BY : WSB	00	
CUSTOMER :		DRAWING NO. : FP0103(0108)-SD	

SIZE	A	B	C	B1	C1	D	E	F	K	L	M	P	V	W
3/4"	2.99	0.56	2.83	1.01	1.45	6.50	0.82	1.05	0.315	0.551	0.250	0.374	1.654	#10-24UNC
1"	3.31	0.81	3.03	1.03	1.63	6.50	1.05	1.31	0.315	0.551	0.250	0.374	1.654	#10-24UNC
1-1/4"	3.94	1.00	3.82	1.16	2.18	9.84	1.38	1.66	0.512	0.906	0.374	0.622	2.756	5/16-18UNC
1-1/2"	4.33	1.26	4.02	1.21	2.36	9.84	1.61	1.90	0.551	0.925	0.374	0.622	2.756	5/16-18UNC
2"	5.04	1.50	4.29	1.41	2.68	10.43	2.07	2.38	0.669	1.043	0.472	0.748	2.756	5/16-18UNC
2-1/2"	6.06	2.00	4.65	1.65	3.03	10.43	2.47	2.88	0.728	1.102	0.472	0.748	2.756	5/16-18UNC

BILL OF MATERIAL

NO.	PART NAME	Qty	SP3000	SP2000
29	LOCATING LOCK	1	SS304	
28	PLASTIC HANDLE SLEEVE	1	VNVL	
26	THIN NUT	2	SS304	
25	LEVER HANDLE	1	SS304	
24	VALVE STOP: BOLT	1	SS304	
23	VALVE STOP: SET SLEEVE	1	SS304	
19	LOCK WASHER	1	SS304	
18	DISK SPRING WASHER	2	SS301	
15	PK GLD SLEEVE	1	SS304	
14	STEM PACKING	1	Graphite	
12	THRUST WASHER	1	50% PTFE + 50% 316	
11B	PACKING PROTECTOR	1	PEEK	
11A	WASHER PROTECTOR	1	PEEK	
10A/B	ANTI-STATIC	1/1	SS316	
9	BODY BOLT	Note	ASTM A193 B8	
6B	GASKET(2)	2	GRAPHITE	
6A	GASKET(1)	2	TFM-1600	
5	STEM	1	ASTM A479 Gr. 316	
4	SEAT	2	TFM-1600	
3	BALL	1	A351-CF8M / A479 Gr. 316	
2	CAP	2	A351-CF3M A216-WCB	
1	BODY	1	A351-CF8M A216-WCB	

Note:
0.5"-1.5": 8
2": 12



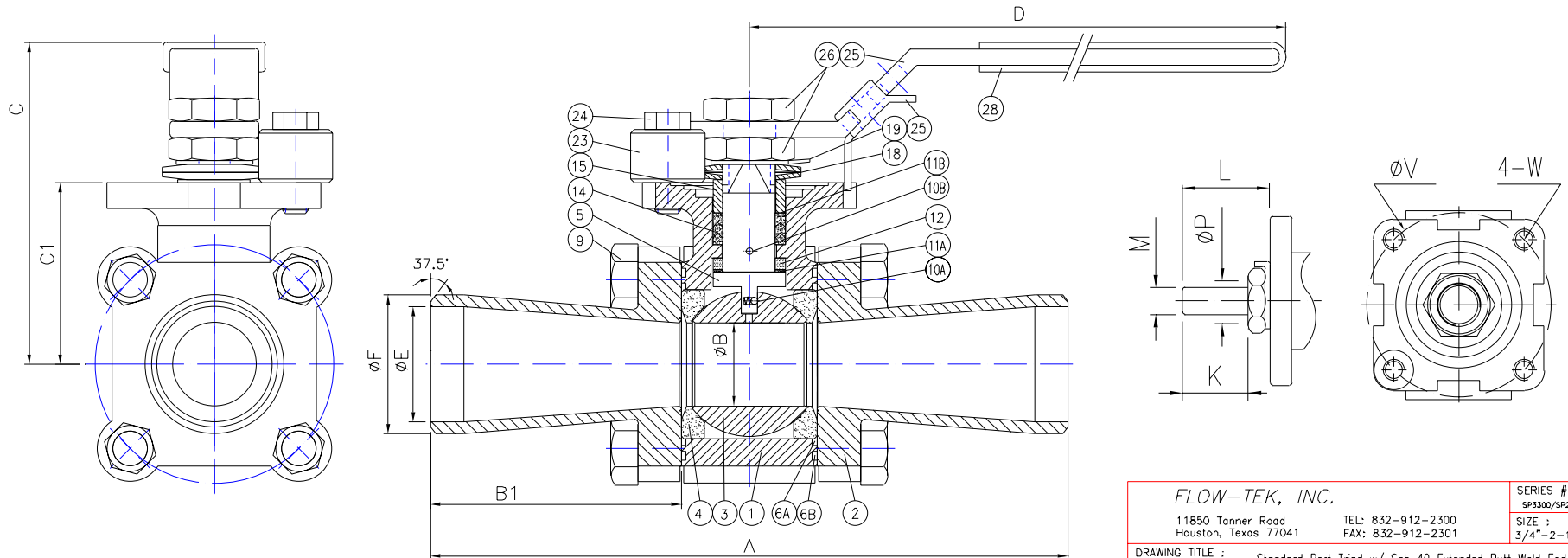
FLOW-TEK, INC.		SERIES # SP3300/SP2300
11850 Tanner Road Houston, Texas 77041		TEL: 832-912-2300 FAX: 832-912-2301
SIZE : 3/4"-2-1/2"		
DRAWING TITLE : Standard Port Triad w/ Sch 40 Butt Weld End		
SCALE : NTS	DRAWN BY : MG	REV. LEVEL
DATE : Feb. 05, 2004	APPROVED BY : WSB	00
CUSTOMER :	DRAWING NO. : SP0403(0408)-SD	

SIZE	A	B	C	B1	C1	D	E	F	K	L	M	P	V	W
3/4"	8.98	0.56	2.83	4.00	1.45	6.50	0.82	1.05	0.315	0.551	0.250	0.374	1.654	#10-24UNC
1"	9.24	0.81	3.03	4.00	1.63	6.50	1.05	1.31	0.315	0.551	0.250	0.374	1.654	#10-24UNC
1-1/4"	9.62	1.00	3.82	4.00	2.18	9.84	1.38	1.66	0.512	0.906	0.374	0.622	2.756	5/16-18UNC
1-1/2"	9.91	1.26	4.02	4.00	2.36	9.84	1.61	1.90	0.551	0.925	0.374	0.622	2.756	5/16-18UNC
2"	10.22	1.50	4.29	4.00	2.68	10.43	2.07	2.38	0.669	1.043	0.472	0.748	2.756	5/16-18UNC
2-1/2"	10.76	2.00	4.65	4.00	3.03	10.43	2.47	2.88	0.728	1.102	0.472	0.748	2.756	5/16-18UNC

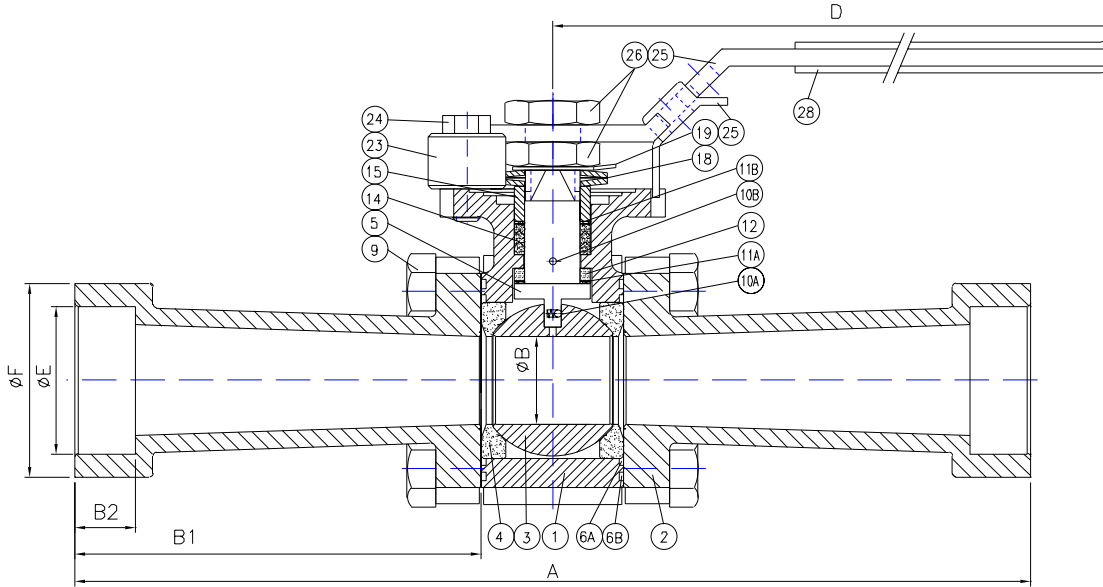
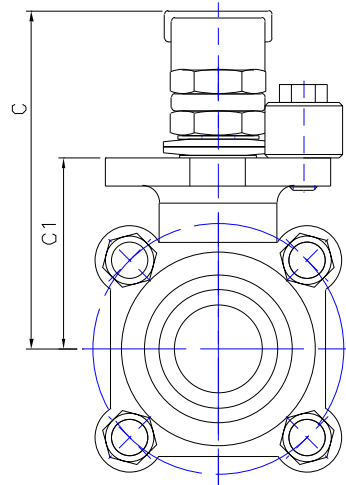
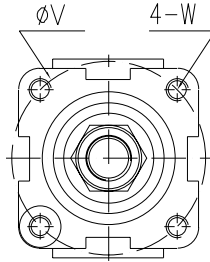
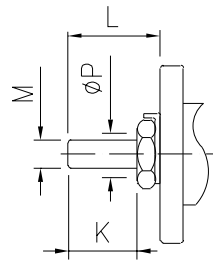
BILL OF MATERIAL

NO.	PART NAME	Qty	FP3000	FP2000
29	LOCATING LOCK	1	SS304	
28	PLASTIC HANDLE SLEEVE	1	VNVL	
26	THIN NUT	2	SS304	
25	LEVER HANDLE	1	SS304	
24	VALVE STOP: BOLT	1	SS304	
23	VALVE STOP: SET SLEEVE	1	SS304	
19	LOCK WASHER	1	SS304	
18	DISK SPRING WASHER	2	SS301	
15	PK GLD SLEEVE	1	SS304	
14	STEM PACKING	1	Graphite	
12	THRUST WASHER	1	50% PTFE + 50% 316	
11B	PACKING PROTECTOR	1	PEEK	
11A	WASHER PROTECTOR	1	PEEK	
10A/B	ANTI-STATIC	1/1	SS316	
9	BODY BOLT	Note	ASTM A193 B8	
6B	CASKET(2)	2	GRAPHITE	
6A	CASKET(1)	2	TFM-1600	
5	STEM	1	ASTM A479 Gr. 316	
4	SEAT	2	TFM-1600	
3	BALL	1	A351-CF8M / A479 Gr. 316	
2	CAP	2	A351-CF3M A216-WCB	
1	BODY	1	A351-CF8M A216-WCB	

Note:
0.5"-1.5": 8
2": 12



FLOW-TEK, INC.		SERIES # SP3300/SP2300
11850 Tanner Road Houston, Texas 77041	TEL: 832-912-2300 FAX: 832-912-2301	SIZE : 3/4"-2-1/2"
DRAWING TITLE : Standard Port Triad w/ Sch 40 Extended Butt Weld End		
SCALE : NTS	DRAWN BY : MG	REV. LEVEL
DATE : Feb. 05, 2004	APPROVED BY : WSB	00
CUSTOMER :	DRAWING NO. : SP0303(0308)-ExtendedBW-SD	



BILL OF MATERIAL

NO.	PART NAME	Qty	SP3000	SP2000
29	LOCATING LOCK	1	SS304	
28	PLASTIC HANDLE SLEEVE	1	VINYL	
26	THIN NUT	2	SS304	
25	LEVER HANDLE	1	SS304	
24	VALVE STOP: BOLT	1	SS304	
23	VALVE STOP: SET SLEEVE	1	SS304	
19	LOCK WASHER	1	SS304	
18	DISK SPRING WASHER	2	SS301	
15	PK GLD SLEEVE	1	SS304	
14	STEM PACKING	1	Graphite	
12	THRUST WASHER	1	50% PTFE + 50% 316	
11B	PACKING PROTECTOR	1	PEEK	
11A	WASHER PROTECTOR	1	PEEK	
10A/B	ANTI-STATIC	1/1	SS316	
9	BODY BOLT	Note	ASTM A193 B8	
6B	GASKET(2)	2	GRAPHITE	
6A	GASKET(1)	2	TFM-1600	
5	STEM	1	ASTM A479 Gr. 316	
4	SEAT	2	TFM-1600	
3	BALL	1	A351-CF8M / A479 Gr. 316	
2	CAP	2	A351-CF3M / A216-WCB	
1	BODY	1	A351-CF8M / A216-WCB	

Note:
0.5" - 1.5": 8
2": 12

SIZE	A	B	C	B1	C1	B2	D	E	F	K	L	M	P	V	W
3/4"	10.10	0.56	2.83	4.56	1.45	0.56	6.50	1.07	1.41	0.315	0.551	0.250	0.374	1.654	#10-24UNC
1"	10.49	0.81	3.03	4.63	1.63	0.63	6.50	1.33	1.73	0.315	0.551	0.250	0.374	1.654	#10-24UNC
1-1/4"	11.00	1.00	3.82	4.69	2.18	0.69	9.84	1.68	2.10	0.512	0.906	0.374	0.622	2.756	5/16-18UNC
1-1/2"	11.41	1.26	4.02	4.75	2.36	0.75	9.84	1.91	2.36	0.551	0.925	0.374	0.622	2.756	5/16-18UNC
2"	11.97	1.50	4.29	4.87	2.68	0.87	10.43	2.41	2.91	0.669	1.043	0.472	0.748	2.756	5/16-18UNC
2-1/2"	12.72	2.00	4.65	4.98	3.03	0.98	10.43	2.91	3.51	0.728	1.102	0.472	0.748	2.756	5/16-18UNC

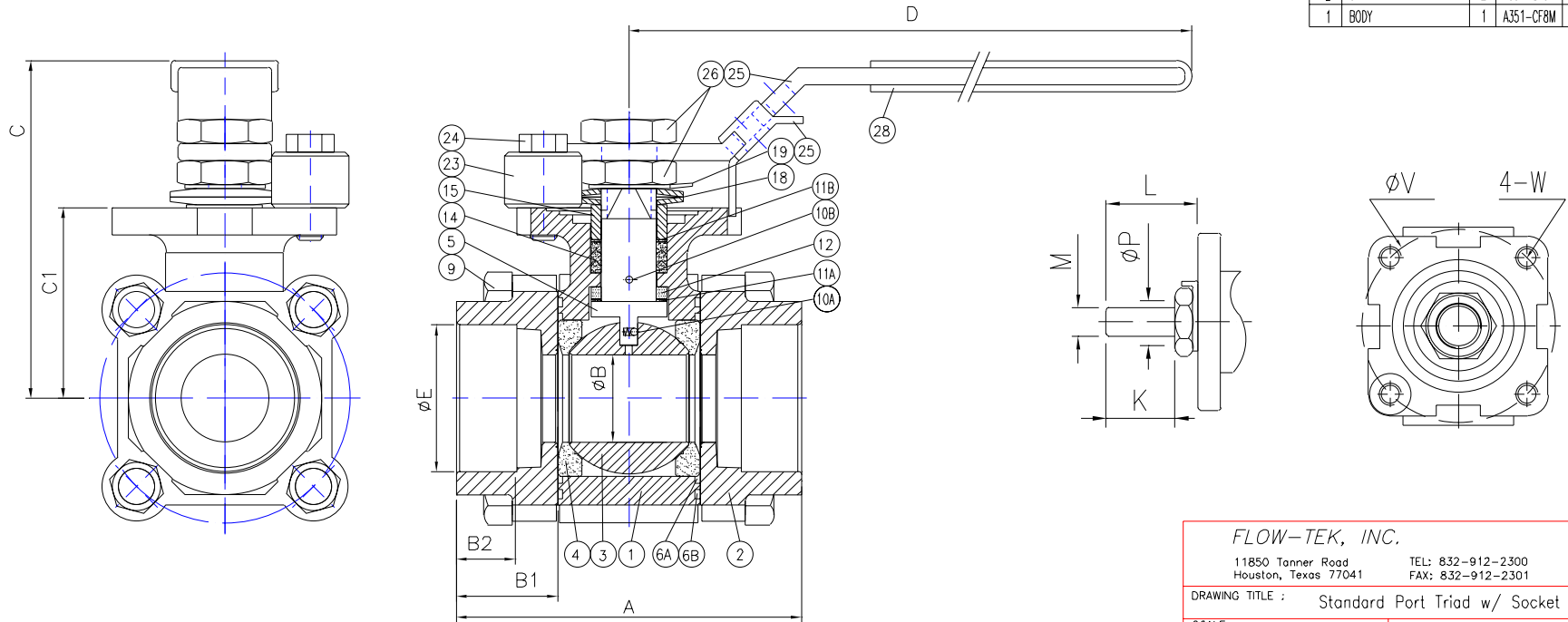
FLOW-TEK, INC. 11850 Tanner Road Houston, Texas 77041		SERIES # SP3200/SP2200	
		SIZE : 3/4"-2-1/2"	
DRAWING TITLE : Standard Port Triad w/ Extended Socket Weld End			
SCALE : NTS	DRAWN BY : MG	REV. LEVEL	
DATE : Feb. 05, 2004	APPROVED BY : WSB	OO	
CUSTOMER :		DRAWING NO. :	
		SP0503(0508)-ExtendedSW-SD	

SIZE	A	B	C	B1	C1	B2	D	E	K	L	M	P	V	W
3/4"	2.99	0.56	2.83	1.01	1.45	0.56	6.50	1.07	0.315	0.551	0.250	0.374	1.654	#10-24UNC
1"	3.31	0.81	3.03	1.03	1.63	0.63	6.50	1.33	0.315	0.551	0.250	0.374	1.654	#10-24UNC
1-1/4"	3.94	1.00	3.82	1.16	2.18	0.69	9.84	1.68	0.512	0.906	0.374	0.622	2.756	5/16-18UNC
1-1/2"	4.33	1.26	4.02	1.21	2.36	0.75	9.84	1.91	0.551	0.925	0.374	0.622	2.756	5/16-18UNC
2"	5.04	1.50	4.29	1.41	2.68	0.87	10.43	2.41	0.669	1.043	0.472	0.748	2.756	5/16-18UNC
2-1/2"	6.06	2.00	4.65	1.65	3.03	0.98	10.43	2.91	0.728	1.102	0.472	0.748	2.756	5/16-18UNC

BILL OF MATERIAL

NO.	PART NAME	Qty	SP3000	SP2000
29	LOCATING LOCK	1	SS304	
28	PLASTIC HANDLE SLEEVE	1	VNYL	
26	THIN NUT	2	SS304	
25	LEVER HANDLE	1	SS304	
24	VALVE STOP: BOLT	1	SS304	
23	VALVE STOP: SET SLEEVE	1	SS304	
19	LOCK WASHER	1	SS304	
18	DISK SPRING WASHER	2	SS301	
15	PK GLD SLEEVE	1	SS304	
14	STEM PACKING	1	Graphite	
12	THRUST WASHER	1	50% PTFE + 50% 316	
11B	PACKING PROTECTOR	1	PEEK	
11A	WASHER PROTECTOR	1	PEEK	
10A/B	ANTI-STATIC	1/1	SS316	
9	BODY BOLT	Note	ASTM A193 B8	
6B	GASKET(2)	2	GRAPHITE	
6A	GASKET(1)	2	TFM-1600	
5	STEM	1	ASTM A479 Gr. 316	
4	SEAT	2	TFM-1600	
3	BALL	1	A351-CF8M / A479 Gr. 316	
2	CAP	2	A351-CF3M A216-WCB	
1	BODY	1	A351-CF8M A216-WCB	

Note:
0.5"-1.5": 8
2": 12



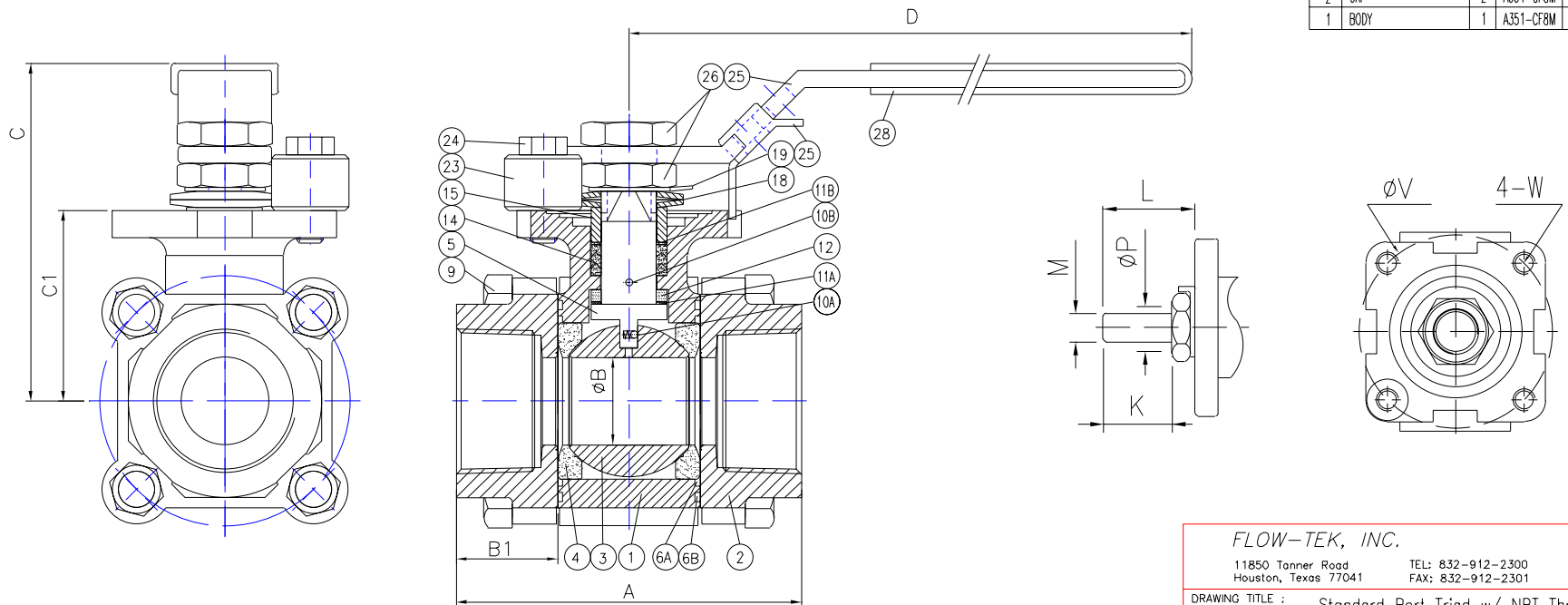
FLOW-TEK, INC. 11850 Tanner Road Houston, Texas 77041		TEL: 832-912-2300 FAX: 832-912-2301	SERIES # SP3200/SP2200
		SIZE : 3/4"-2-1/2"	
DRAWING TITLE : Standard Port Triad w/ Socket Weld End			
SCALE : NTS	DRAWN BY : MG	REV. LEVEL	
DATE : Feb. 05, 2004	APPROVED BY : WSB	00	
CUSTOMER :	DRAWING NO. : SP0203(0208)-SD		

SIZE	A	B	C	B1	C1	D	K	L	M	P	V	W
3/4"	2.99	0.56	2.83	1.01	1.45	6.50	0.315	0.551	0.250	0.374	1.654	#10-24UNC
1"	3.31	0.81	3.03	1.03	1.63	6.50	0.315	0.551	0.250	0.374	1.654	#10-24UNC
1-1/4"	3.94	1.00	3.82	1.16	2.18	9.84	0.512	0.906	0.374	0.622	2.756	5/16-18UNC
1-1/2"	4.33	1.26	4.02	1.21	2.36	9.84	0.551	0.925	0.374	0.622	2.756	5/16-18UNC
2"	5.04	1.50	4.29	1.41	2.68	10.43	0.669	1.043	0.472	0.748	2.756	5/16-18UNC
2-1/2"	6.06	2.00	4.65	1.65	3.03	10.43	0.728	1.102	0.472	0.748	2.756	5/16-18UNC

BILL OF MATERIAL

NO.	PART NAME	Qty	SP3000	SP2000
29	LOCATING LOCK	1	SS304	
28	PLASTIC HANDLE SLEEVE	1	VNVL	
26	THIN NUT	2	SS304	
25	LEVER HANDLE	1	SS304	
24	VALVE STOP: BOLT	1	SS304	
23	VALVE STOP: SET SLEEVE	1	SS304	
19	LOCK WASHER	1	SS304	
18	DISK SPRING WASHER	2	SS301	
15	PK. GLD. SLEEVE	1	SS304	
14	STEM PACKING	1	Graphite	
12	THRUST WASHER	1	50% PTFE + 50% 316	
11B	PACKING PROTECTOR	1	PEEK	
11A	WASHER PROTECTOR	1	PEEK	
10A/B	ANTI-STATIC	1/1	SS316	
9	BODY BOLT	Note	ASTM A193 B8	
6B	GASKET(2)	2	GRAPHITE	
6A	GASKET(1)	2	TFM-1600	
5	STEM	1	ASTM A479 Gr. 316	
4	SEAT	2	TFM-1600	
3	BALL	1	A351-CF8M / A479 Cr. 316	
2	CAP	2	A351-CF8M / A216-WCB	
1	BODY	1	A351-CF8M / A216-WCB	

Note:
0.5"-1.5": 8
2": 12



FLOW-TEK, INC. 11850 Tanner Road Houston, Texas 77041		SERIES # SP3100/SP2100	
		TEL: 832-912-2300 FAX: 832-912-2301	
DRAWING TITLE : Standard Port Triad w/ NPT Thread End		SIZE : 3/4"-2-1/2"	
SCALE : NTS	DRAWN BY : MG	REV. LEVEL 00	
DATE : Feb. 05, 2004	APPROVED BY : WSB		
CUSTOMER :	DRAWING NO. : SP0103(0108)-SD		