

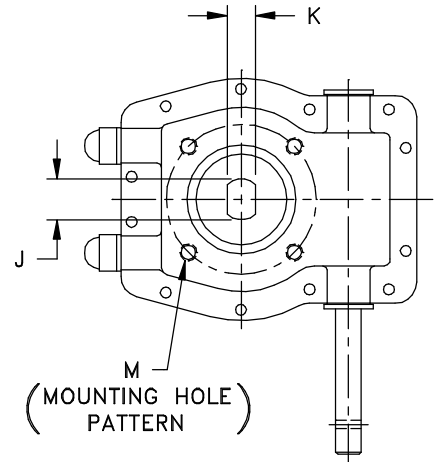
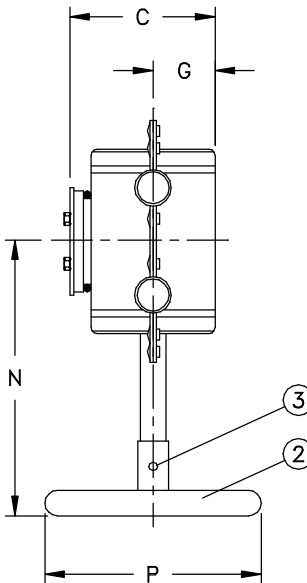
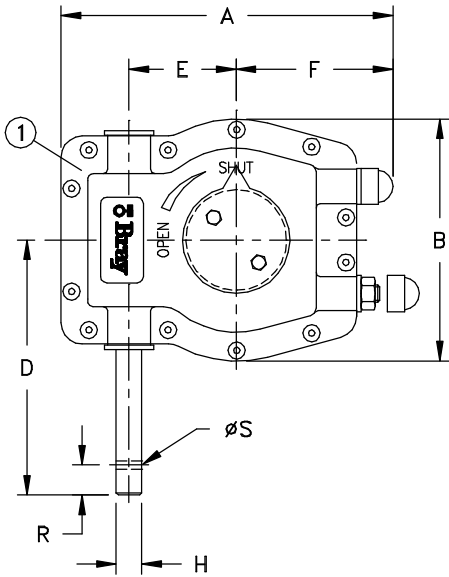
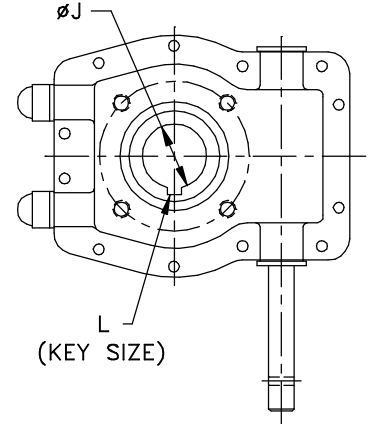
ATTENTION

THIS DOCUMENT IS VALID IF AND ONLY IF YOU PERSONALLY DOWNLOADED IF FROM WWW.BRAY.COM
IF YOU RECEIVED THIS DOCUMENT FROM ANY OTHER SOURCE, PLEASE TAKE INTO CONSIDERATION THAT ALTERATIONS
COULD HAVE BEEN MADE, FOR AN ORIGINAL COPY, PLEASE CONTACT BRAY VALVE AT 281-894-5454

Size	RATIO	A	B	C	D	E	F	G	øH	J	K	L	M (Mounting Hole Pattern)			WT (Kg)
													BC	No. of Holes	Threads UNC-2B	
0100	40:1	106.5	92	40	114	42.5	36.5	17	12	10	8	---	50	4	M6 X 1.00	.8
0200	37:1	155	113	68	119	50	71	29	12	19	13	---	70	4	M8 X 1.25	1.3
0300	40:1	236	188	87	167	80	102	40	20	30	22	---	125	4	M12 X 1.75	7
0300	40:1	236	188	87	167	80	102	40	20	35	---	10X10	125	4	M12 X 1.75	7

Size	N	øP	R	øS	Torque (Nm)	Adaptor Code	# Turns to Close
0100	130	100	14	4	125	AAO	10
0200	167	150	14	4	250	A1,B1,C0	9.25
0300	229	350	24	6	1000	EO	10
0300	229	350	24	6	1000	FO	10

NOTE: ADJUSTABLE TRAVEL STOPS ON SIZES 0200 AND 0300



3	ROLL PIN	1
2	HANDWHEEL	1
1	OPERATOR	1
ITEM No.	NAME	No. REQUIRED

Valve Size _____ Flg. Drilling _____
 Pressure Rating _____
 Customer/Project _____
 Inq./P.O. No. _____
 Bray Order No. _____
 Certified Correct By _____ Date _____



BRAY CONTROLS

A Division of BRAY INTERNATIONAL, Inc.

DIMENSIONS (METRIC)
 GEAR OPERATOR, SERIES 04, STAINLESS STEEL
 SIZE 0100-0300

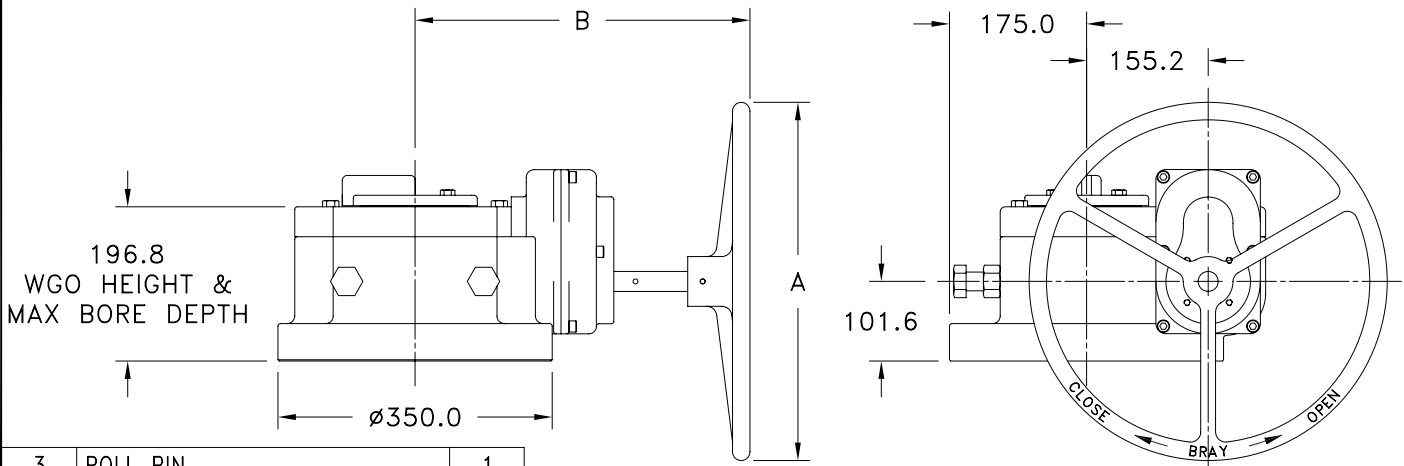
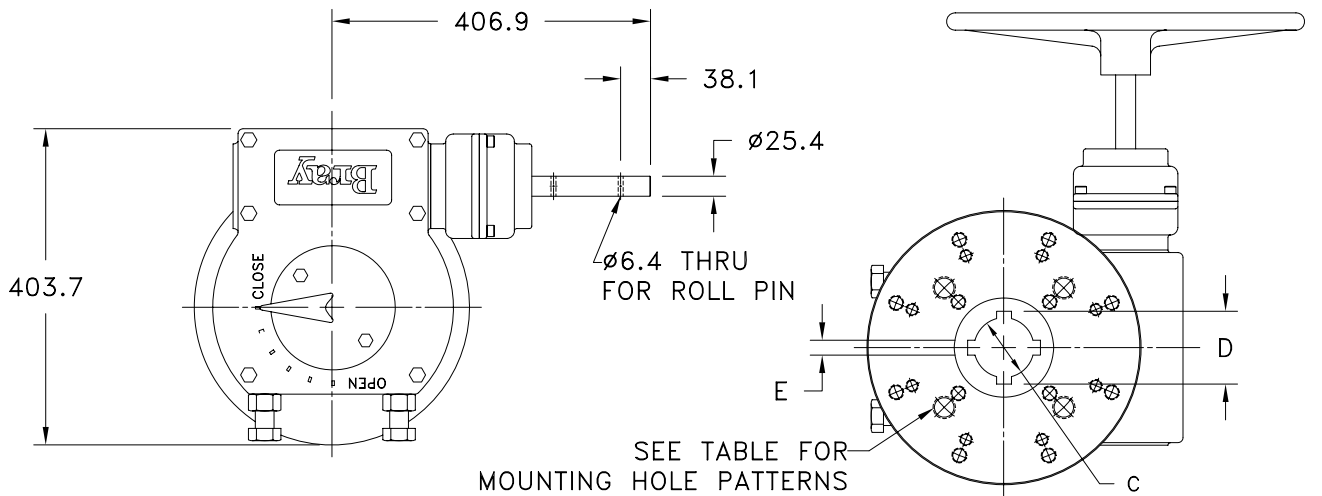
Series	Size	Part No.	Material Trim Code	Drawing No.
				ES12A-0376



ATTENTION

THIS DOCUMENT IS VALID IF AND ONLY IF YOU PERSONALLY DOWNLOADED IF FROM WWW.BRAY.COM
 IF YOU RECEIVED THIS DOCUMENT FROM ANY OTHER SOURCE, PLEASE TAKE INTO CONSIDERATION THAT ALTERATIONS
 COULD HAVE BEEN MADE, FOR AN ORIGINAL COPY, PLEASE CONTACT BRAY VALVE AT 281-894-5454

Size	Ratio	A	B	C	D	E	BC	Mounting No. of Holes	Hole Pattern Threads	Depth	Adapter Code	Torque (N-M)	Weight (kgs)
1500	150:1	450	429.0	63.627	77.50	15.88	250.0	8	.62-11UNC	25.4	F25-1	8474	114
		450	429.0	63.627	77.50	15.88	165.0	4	.75-10UNC	25.4	H		
		450	429.0	76.327	92.96	19.05	165.0	4	.75-10UNC	25.4	K		
		450	429.0	76.327	92.96	19.05	215.9	4	1.12-7UNC	31.8	J		
		450	429.0	76.327	92.96	19.05	300.0	8	.75-10UNC	25.4	F30-1		
		600	521.2	76.327	92.96	19.05	250.0	8	.62-11UNC	25.4	F25-2		
		600	521.2	89.052	102.11	22.22	215.9	4	1.12-7UNC	31.8	L		
3500	350:1	450	429.0	89.052	102.11	22.22	215.9	4	1.12-7UNC	31.8	L	11298	
		450	429.0	89.052	102.11	22.22	300.0	8	.75-10UNC	25.4	F30-2		
		600	521.2	89.052	102.11	22.00	300.0	8	.75-10UNC	25.4	F30-2		
		450	429.0	101.752	117.58	25.40	215.9	4	1.12-7UNC	31.8	M		
		600	521.2	101.752	117.58	25.40	300.0	8	.75-10UNC	25.4	F30-3		



3	ROLL PIN	1
2	HANDWHEEL	1
1	GEAR OPERATOR	1
ITEM	NAME	QTY

Customer/Project _____
 Inq./P.O. No. _____
 Bray Order No. _____
 Certified Correct By _____ Date _____

DIMENSIONAL OUTLINE (metric)
 GEAR OPERATOR, SERIES 04
 SIZE 150:1 AND 350:1

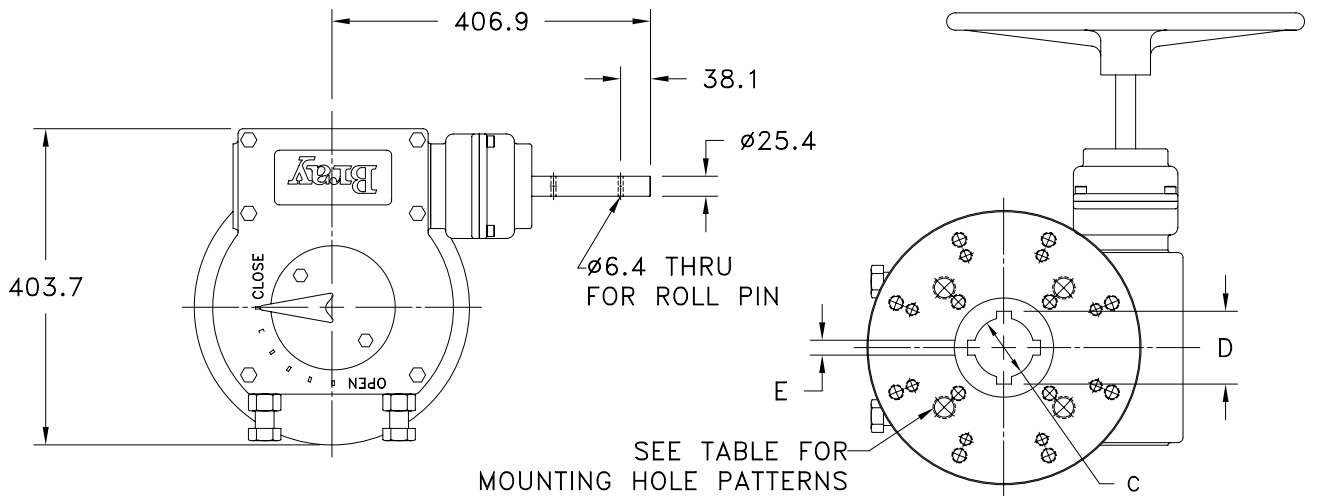


SHEET	REV.
1 OF 1	3
DRAWING NO.	
ES12A-0405	

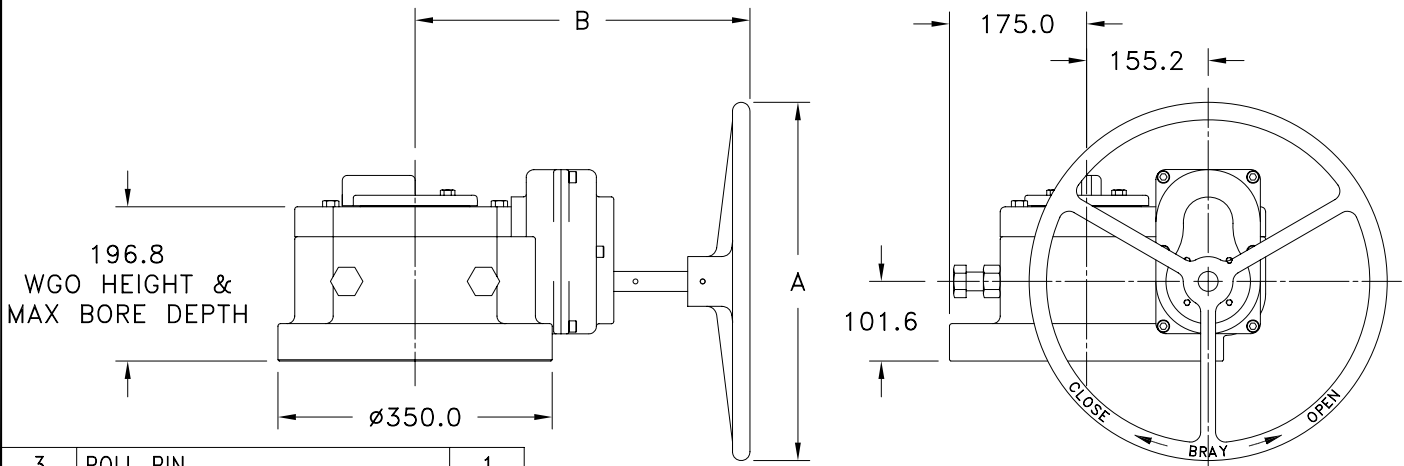
ATTENTION

THIS DOCUMENT IS VALID IF AND ONLY IF YOU PERSONALLY DOWNLOADED IT FROM WWW.BRAY.COM
 IF YOU RECEIVED THIS DOCUMENT FROM ANY OTHER SOURCE, PLEASE TAKE INTO CONSIDERATION THAT ALTERATIONS
 COULD HAVE BEEN MADE. FOR AN ORIGINAL COPY, PLEASE CONTACT BRAY VALVE AT 281-894-5454

Size	Ratio	A	B	C	D	E	BC	Mounting No. of Holes	Hole Pattern Threads	Depth	Adapter Code	Torque (N-M)	Weight (kgs)
1500	150:1	450	429.0	60.174	68.60	18.00	250.0	8	M16 X 2	24.0	F25-1m	8474	114
		450	429.0	60.174	68.60	18.00	165.0	4	M20 X 2.5	24.0	F16-1m		
		450	429.0	75.174	84.65	20.00	165.0	4	M20 X 2.5	24.0	F16-2m		
		450	429.0	75.174	84.65	20.00	300.0	8	M20 X 2.5	30.0	F30-5m		
		450	429.0	75.174	84.65	20.00	300.0	8	M20 X 2.5	30.0	F30-1m		
		600	521.2	75.174	84.65	20.00	250.0	8	M16 X 2	24.0	F25-2m		
		600	521.2	85.207	95.58	22.00	300.0	8	M20 X 2.5	30.0	F30-6m		
3500	350:1	450	429.0	85.207	95.58	22.00	300.0	8	M20 X 2.5	30.0	F30-6m	11298	
		450	429.0	85.207	95.58	22.00	300.0	8	M20 X 2.5	30.0	F30-2m		
		600	521.2	85.207	95.58	22.00	300.0	8	M20 X 2.5	30.0	F30-2m		
		450	429.0	100.207	112.60	28.00	300.0	8	M20 X 2.5	30.0	F30-7m		
		600	521.2	100.207	112.60	28.00	300.0	8	M20 X 2.5	30.0	F30-3m		



SEE TABLE FOR
MOUNTING HOLE PATTERNS



3	ROLL PIN	1
2	HANDWHEEL	1
1	GEAR OPERATOR	1
ITEM	NAME	QTY

Customer/Project _____
 Inq./P.O. No. _____
 Bray Order No. _____
 Certified Correct By _____ Date _____

DIMENSIONAL OUTLINE (metric)
 GEAR OPERATOR, SERIES 04
 SIZE 150:1 AND 350:1
 WITH METRIC STEM

Bray CONTROLS

A Division of BRAY INTERNATIONAL, Inc.

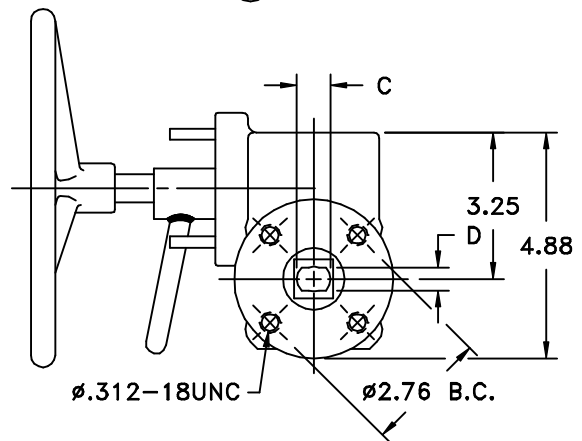
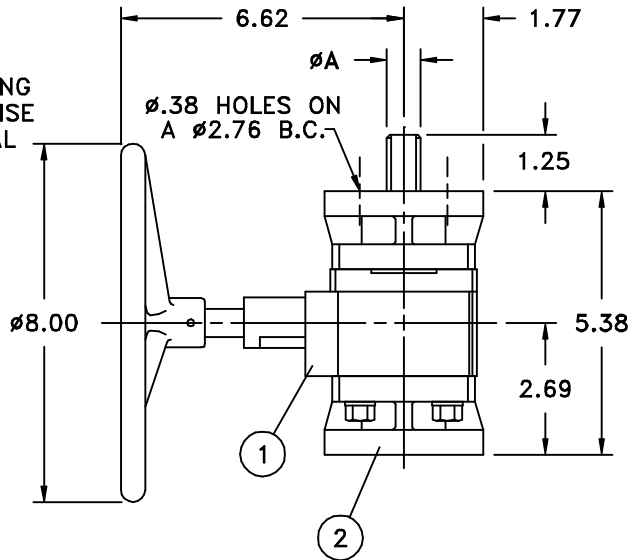
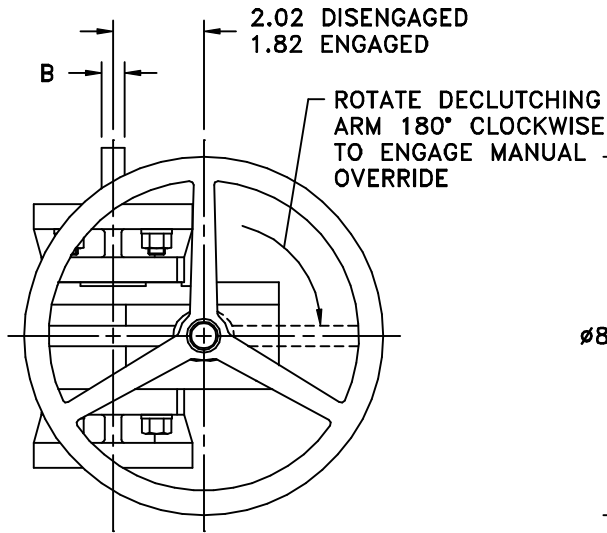
SHEET	REV.
1 OF 1	2
DRAWING NO.	
ES12A-0406	

ATTENTION

THIS DOCUMENT IS VALID IF AND ONLY IF YOU PERSONALLY DOWNLOADED IT FROM WWW.BRAY.COM
 IF YOU RECEIVED THIS DOCUMENT FROM ANY OTHER SOURCE, PLEASE TAKE INTO CONSIDERATION THAT ALTERATIONS
 COULD HAVE BEEN MADE. FOR AN ORIGINAL COPY, PLEASE CONTACT BRAY VALVE AT 281-894-5454

**SERIES 05
 ES11A-0244
 Date: JULY 1996**

Valve Size	Actuator Size	A	B	C	D	Adpt Req'd
2",3"	63	.55	.39	.55	.40	A01
2",3"	83, 92	.75	.51	.55	.40	A02
4"	83, 92	.75	.51	.63	.44	B01
4"	118, 127	1.18	.87	.63	.44	B02
5",6"	83, 92	.75	.51	.75	.51	C01
5",6"	118, 127	1.18	.87	.75	.51	C02



2	ADAPTER KIT	1			
1	GEAR OPERATOR	1			
ITEM No.	NAME	No. REQUIRED	SERIES/PART No.	MATERIAL	SPECIFICATION/REMARKS

Valve Size _____ Flg. Drilling _____
 Pressure Rating _____
 Customer/Project _____
 Inq./P.O. No. _____
 Bray Order No. _____
 Certified Correct By _____ Date _____



BRAY VALVE & CONTROLS

A Division of BRAY INTERNATIONAL, Inc.

**DIMENSIONAL DRAWING (inches) OF SERIES 05 SIZE 24:1
 DECLUTCHABLE GEAR OPERATOR MOUNTING KITS
 TO BRAY VALVES AND ACTUATORS**

Series	Size	Part No.	Material Trim Code	Drawing No.
05	0240	21200	002	ES11A-0244

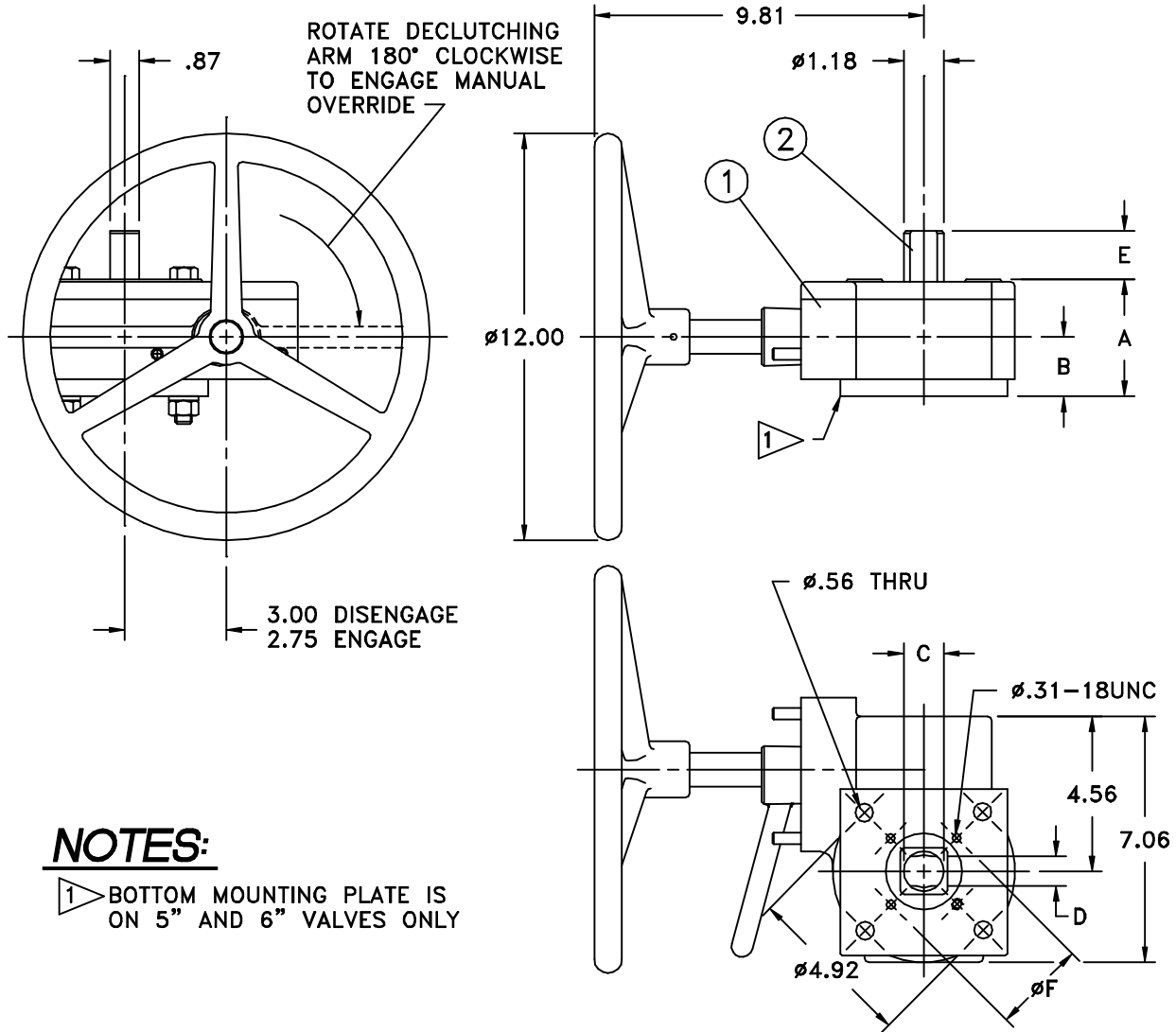


ATTENTION

THIS DOCUMENT IS VALID IF AND ONLY IF YOU PERSONALLY DOWNLOADED IT FROM WWW.BRAY.COM
 IF YOU RECEIVED THIS DOCUMENT FROM ANY OTHER SOURCE, PLEASE TAKE INTO CONSIDERATION THAT ALTERATIONS
 COULD HAVE BEEN MADE. FOR AN ORIGINAL COPY, PLEASE CONTACT BRAY VALVE AT 281-894-5454

**SERIES 05
 ES11A-0245
 Date: JULY 1996**

Valve Size	Actuator Size	A	B	C	D	E	F	Adpt Req'd
5",6"	118,127	3.38	1.75	.75	.51	1.25	2.76	C03
8"	118,127,160A	2.88	1.25	.87	.63	1.25	-	D01
8"	210	2.88	1.25	.87	.63	1.25	-	D02
10",12"	118,127,160A	2.88	1.25	1.18	.87	2.00	-	E01
10",12"	210	2.88	1.25	1.18	.87	2.00	-	E02



NOTES:

1 BOTTOM MOUNTING PLATE IS ON 5" AND 6" VALVES ONLY

2	ADAPTER KIT	1			
1	GEAR OPERATOR	1			
ITEM No.	NAME	No. REQUIRED	SERIES/PART No.	MATERIAL	SPECIFICATION/REMARKS

Valve Size _____ Flg. Drilling _____
 Pressure Rating _____
 Customer/Project _____
 Inq./P.O. No. _____
 Bray Order No. _____
 Certified Correct By _____ Date _____



BRAY VALVE & CONTROLS
 A Division of BRAY INTERNATIONAL, Inc.

DIMENSIONAL DRAWING (inches) OF SERIES 05 SIZE 32:1
 DECLUTCHABLE GEAR OPERATOR MOUNTING KITS
 TO BRAY VALVES AND ACTUATORS

Series	Size	Part No.	Material Trim Code	Drawing No.
05	0400	21200	002	ES11A-0245

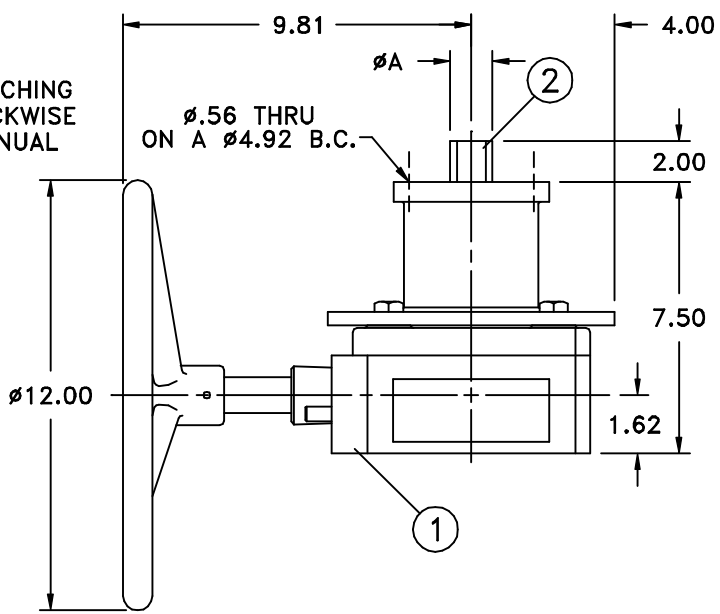
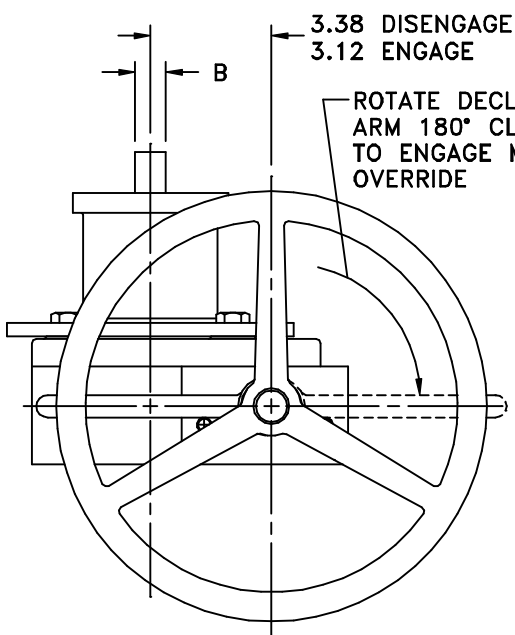
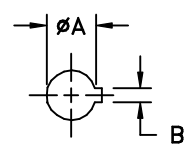
Bray

ATTENTION

THIS DOCUMENT IS VALID IF AND ONLY IF YOU PERSONALLY DOWNLOADED IT FROM WWW.BRAY.COM
 IF YOU RECEIVED THIS DOCUMENT FROM ANY OTHER SOURCE, PLEASE TAKE INTO CONSIDERATION THAT ALTERATIONS
 COULD HAVE BEEN MADE. FOR AN ORIGINAL COPY, PLEASE CONTACT BRAY VALVE AT 281-894-5454

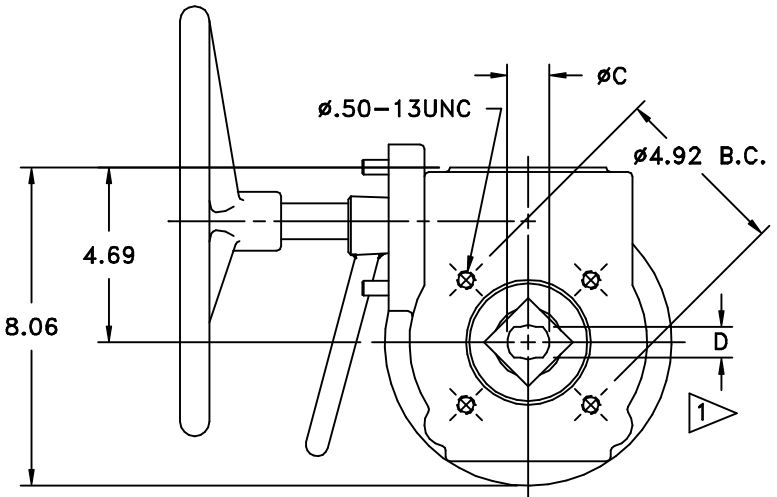
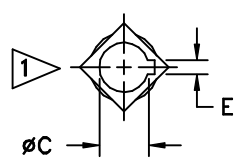
**SERIES 05
 ES11A-0246
 Date: JULY 1996**

Valve Size	Actuator Size	A	B	C	D	E	Adpt Req'd
10",12"	210	1.97	.47	1.18	.87	-	E03
14",16"	160A	1.18	.87	1.38	-	.39	F01
14"16"	210	1.97	.47	1.38	-	.39	F02



NOTES:

1 14" AND LARGER VALVES USE KEYPED STEM



2	ADAPTER KIT	1			
1	GEAR OPERATOR	1			
ITEM No.	NAME	No. REQUIRED	SERIES/PART No.	MATERIAL	SPECIFICATION/REMARKS

Valve Size _____ Flg. Drilling _____
 Pressure Rating _____
 Customer/Project _____
 Inq./P.O. No. _____
 Bray Order No. _____
 Certified Correct By _____ Date _____

The High Performance Company
BRAY VALVE & CONTROLS
 A Division of BRAY INTERNATIONAL, Inc.

DIMENSIONAL DRAWING (inches) OF SERIES 05 SIZE 40:1 DECLUTCHABLE GEAR OPERATOR MOUNTING KITS TO BRAY VALVES AND ACTUATORS

Series	Size	Part No.	Material Trim Code	Drawing No.
05	0500	21200	002	ES11A-0246

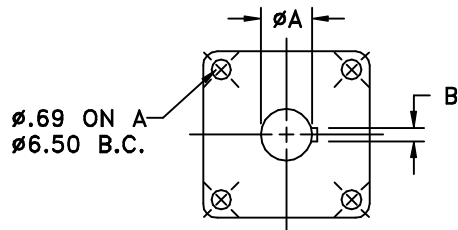


ATTENTION

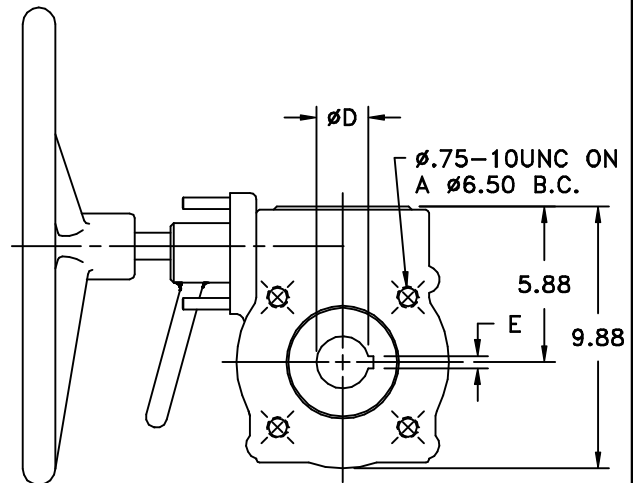
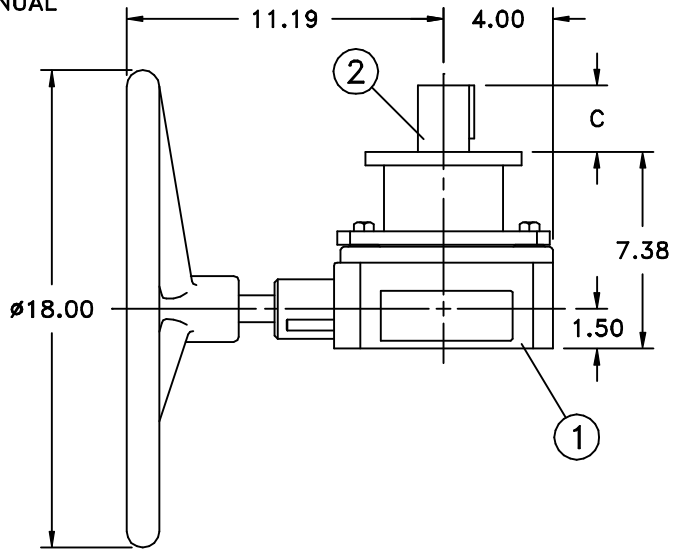
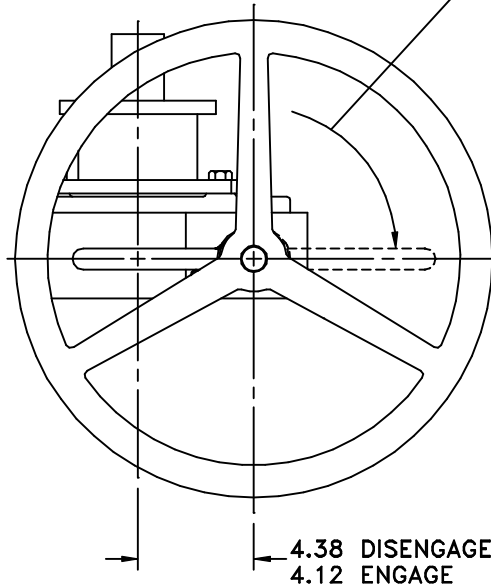
THIS DOCUMENT IS VALID IF AND ONLY IF YOU PERSONALLY DOWNLOADED IT FROM WWW.BRAY.COM
 IF YOU RECEIVED THIS DOCUMENT FROM ANY OTHER SOURCE, PLEASE TAKE INTO CONSIDERATION THAT ALTERATIONS
 COULD HAVE BEEN MADE. FOR AN ORIGINAL COPY, PLEASE CONTACT BRAY VALVE AT 281-894-5454

**SERIES 05
 ES11A-0247
 Date: JULY 1996**

Valve Size	Actuator Size	A	B	C	D	E	Adpt Req'd
14",16"	210	1.97	.47	1.88	1.38	.39	F03
14",16"	255A	2.50	.62	1.88	1.38	.39	F04
18",20"	210	1.97	.47	2.38	1.97	.47	G01
18",20"	255B	3.00	.75	2.38	1.97	.47	G03



ROTATE DECLUTCHING ARM 180° CLOCKWISE TO ENGAGE MANUAL OVERRIDE



2	ADAPTER KIT	1			
1	GEAR OPERATOR	1			
ITEM No.	NAME	No. REQUIRED	SERIES/PART No.	MATERIAL	SPECIFICATION/REMARKS

Valve Size _____ Flg. Drilling _____
 Pressure Rating _____
 Customer/Project _____
 Inq./P.O. No. _____
 Bray Order No. _____
 Certified Correct By _____ Date _____



BRAY VALVE & CONTROLS
 A Division of BRAY INTERNATIONAL, Inc.

DIMENSIONAL DRAWING (inches) OF SERIES 05 SIZE 54:1
 DECLUTCHABLE GEAR OPERATOR MOUNTING KITS
 TO BRAY VALVES AND ACTUATORS

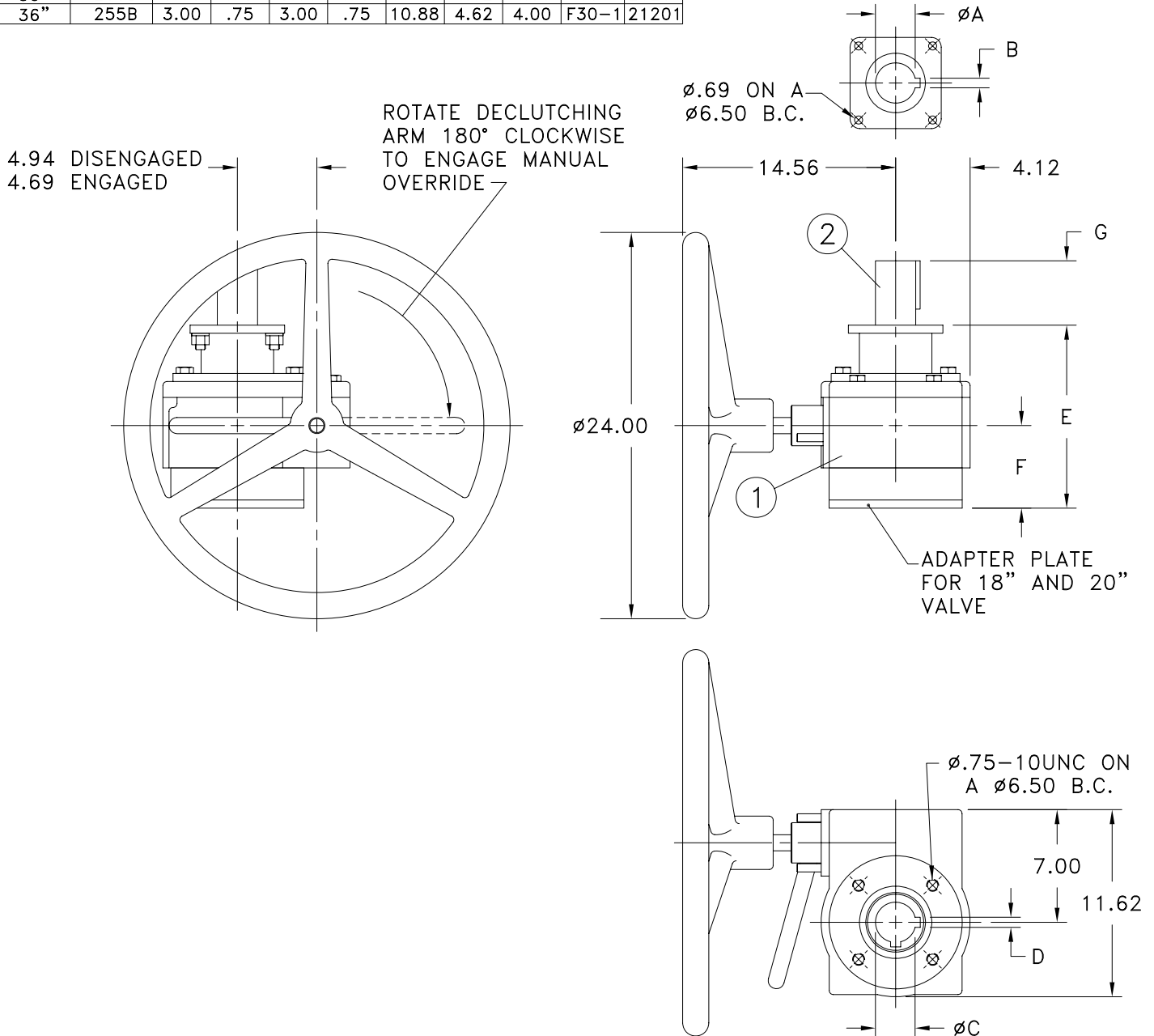
Series	Size	Part No.	Material Trim Code	Drawing No.
05	0540	21200	002	ES11A-0247



ATTENTION

THIS DOCUMENT IS VALID IF AND ONLY IF YOU PERSONALLY DOWNLOADED IF FROM WWW.BRAY.COM
 IF YOU RECEIVED THIS DOCUMENT FROM ANY OTHER SOURCE, PLEASE TAKE INTO CONSIDERATION THAT ALTERATIONS
 COULD HAVE BEEN MADE, FOR AN ORIGINAL COPY, PLEASE CONTACT BRAY VALVE AT 281-894-5454

Valve Size	Actuator Size	A	B	C	D	E	F	G	Adpt Req'd	Part No.
18",20"	255B	3.00	.75	1.97	.47	11.50	5.12	4.00	G02	21201
24"	255A	2.50	.62	2.50	.62	11.00	4.62	3.88	H02	21200
30"	255B	3.00	.75	3.00	.75	11.00	4.62	4.00	J01	21201
36"	255B	3.00	.75	3.00	.75	10.88	4.62	4.00	F30-1	21201



2	ADAPTER KIT	1			
1	GEAR OPERATOR	1			
ITEM No.	NAME	No. REQUIRED	SERIES/PART No.	MATERIAL	SPECIFICATION/REMARKS

Valve Size _____ Pressure Rating _____
 Flg. Drilling _____
 Customer/Project _____
 Inq./P.O. No. _____
 Bray Order No. _____
 Certified Correct By _____ Date _____

DIMENSIONAL DRAWING (INCHES)
 SERIES 05 SIZE 64:1
 DECLUTCHABLE GEAR OPERATOR MOUNTING KITS
 TO BRAY VALVES AND ACTUATORS



SHEET	REV.
1 OF 1	1
DRAWING NO.	
ES11A-0248	