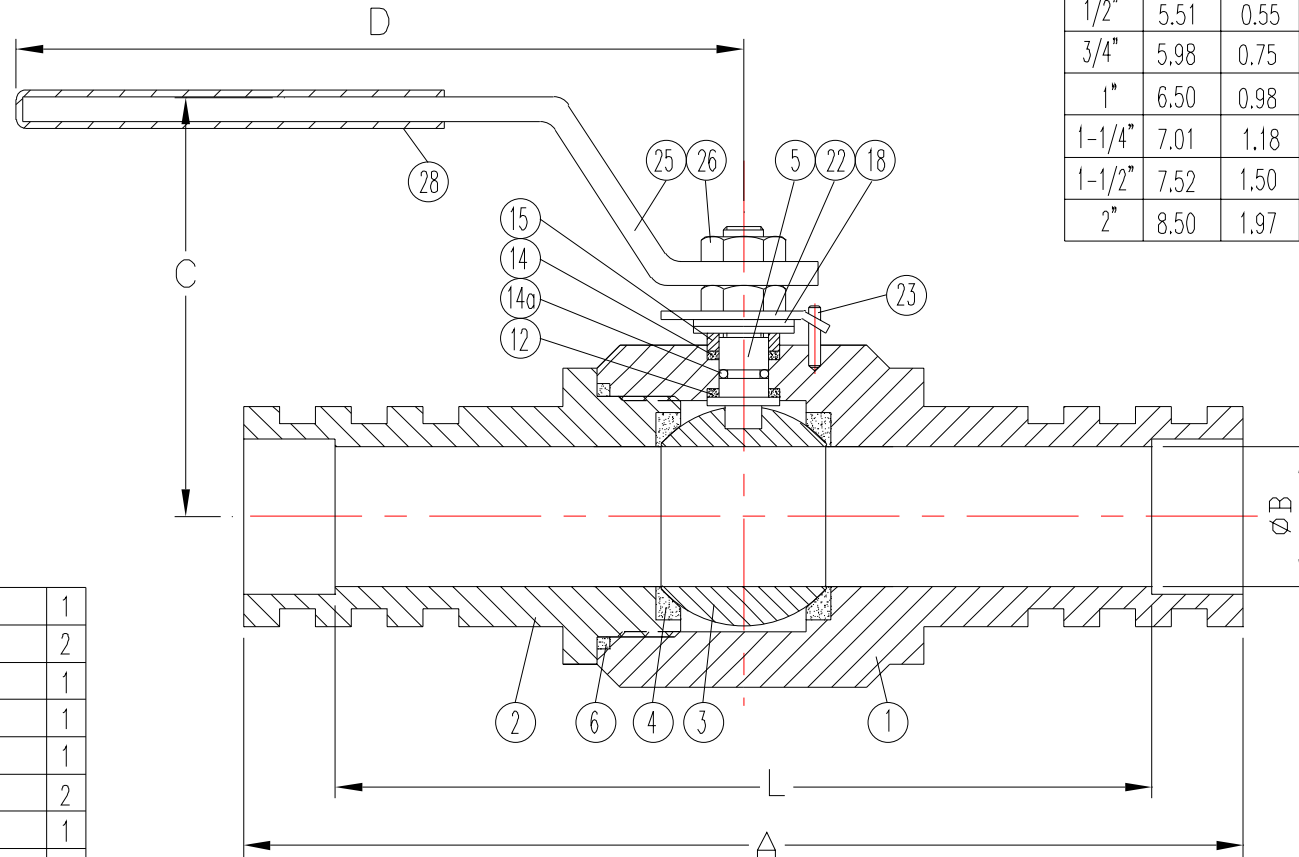


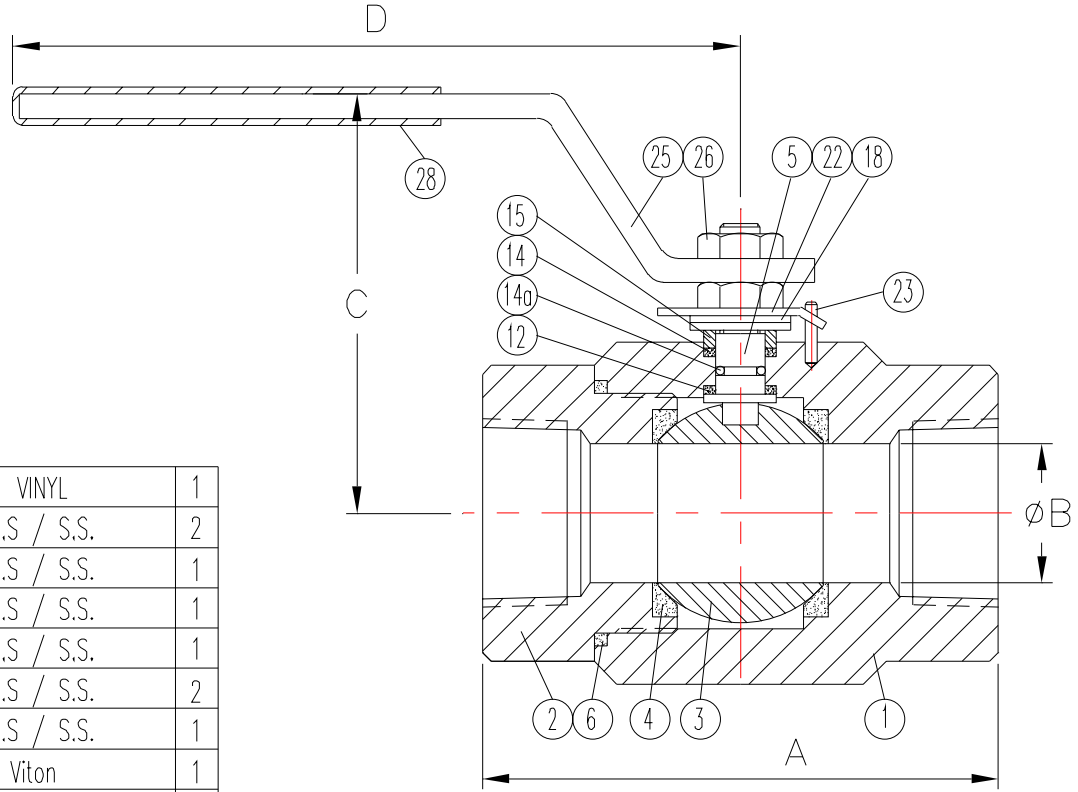
Size	A	ØB	C	D	L
1/4"	5.12	0.39	2.83	5.83	4.37
3/8"	5.12	0.39	2.95	5.83	4.37
1/2"	5.51	0.55	3.35	5.83	4.76
3/4"	5.98	0.75	3.74	7.09	4.96
1"	6.50	0.98	3.94	7.09	5.47
1-1/4"	7.01	1.18	4.13	9.45	5.98
1-1/2"	7.52	1.50	4.53	9.45	4.13
2"	8.50	1.97	5.12	11.02	7.24



28	Handle Sleeve	VINYL	1
26	Stem Nut	C.S / S.S.	2
25	Handle	C.S / S.S.	1
23	Travel Stop Pin	C.S / S.S.	1
22	Travel Stop Plate	C.S / S.S.	1
18	Disk Spring	C.S / S.S.	2
15	Packing Follower	C.S / S.S.	1
14a	O-Ring	Viton	1
14	Stem Packing	Graphite	1
12	Thrust Washer	RPTFE	1
6	Body Seal	Graphite	1
5	Stem	ASTM A182 F316	1
4	Seat	Delrin	2
3	Ball	ASTM A182 F316	1
2	End Cap	ASTM A105/A182F316	1
1	Body	ASTM A105/A182F316	1
ITEM	NAME	MATERIAL	Qty.

<i>FLOW-TEK, INC.</i>		SERIES # S3000
11850 Tanner Road Houston, Texas 77041		TEL: 832-912-2300 FAX: 832-912-2301
		SIZE : 1/4"-2"
DRAWING TITLE : SW3000 Series Valve		
SCALE : NTS	DRAWN BY : MG	REV. LEVEL
DATE : Feb. 05, 2004	APPROVED BY : WSB	00
CUSTOMER :	DRAWING NO. : SW3000-SD	

Size	A	ØB	C	D
1/4"	2.64	0.39	2.83	5.83
1/2"	2.64	0.59	2.83	5.83
3/4"	2.95	0.79	2.95	5.83
1"	3.54	0.98	3.35	7.09
1-1/4"	4.13	1.18	3.74	7.09
1-1/2"	4.72	1.50	3.94	9.45
2"	5.31	1.89	4.13	9.45
2-1/2"	6.10	2.56	4.53	11.02
3"	7.48	3.15	5.12	14.96



28	Handle Sleeve	VINYL	1
26	Stem Nut	C.S / S.S.	2
25	Handle	C.S / S.S.	1
23	Travel Stop Pin	C.S / S.S.	1
22	Travel Stop Plate	C.S / S.S.	1
18	Disk Spring	C.S / S.S.	2
15	Packing Follower	C.S / S.S.	1
14a	O-Ring	Viton	1
14	Stem Packing	Graphite	1
12	Thrust Washer	RPTFE	1
6	Body Seal	Graphite	1
5	Stem	ASTM A182 F316	1
4	Seat	Delrin	2
3	Ball	ASTM A182 F316	1
2	End Cap	ASTM A105/A182F316	1
1	Body	ASTM A105/A182F316	1
ITEM	NAME	MATERIAL	Qty.

<p><i>FLOW-TEK, INC.</i></p> <p>11850 Tanner Road TEL: 832-912-2300 Houston, Texas 77041 FAX: 832-912-2301</p>		SERIES # S3000
		SIZE : 1/4"-3"
DRAWING TITLE : S3000 Series Valve		
SCALE : NTS	DRAWN BY : MG	REV. LEVEL
DATE : Feb. 05, 2004	APPROVED BY : WSB	00
CUSTOMER :	DRAWING NO. : S3000-SD	