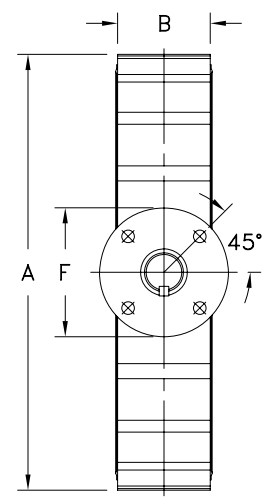
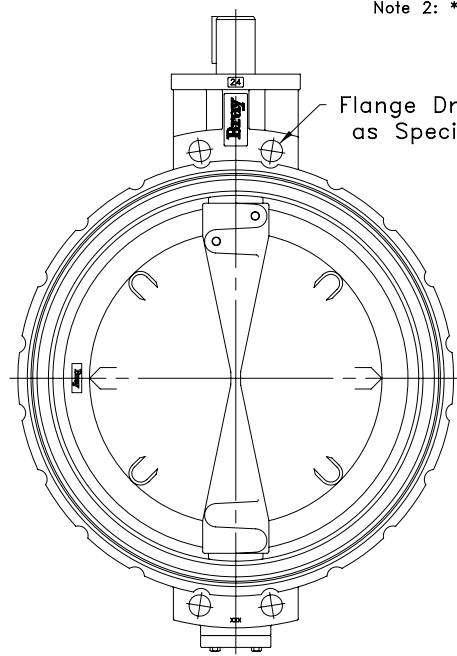
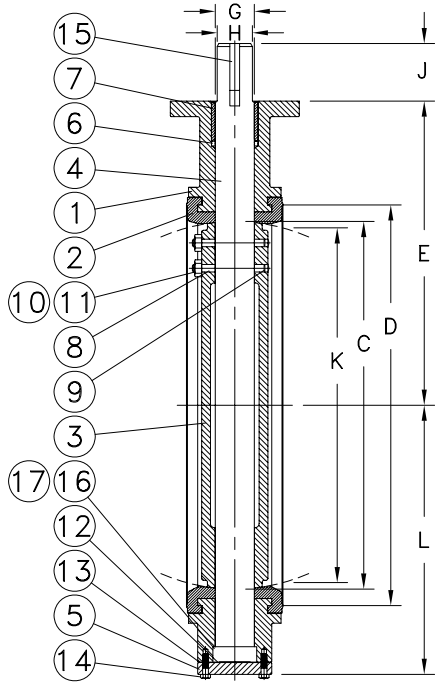


ATTENTION

THIS DOCUMENT IS VALID IF AND ONLY IF YOU PERSONALLY DOWNLOADED IF FROM WWW.BRAY.COM
 IF YOU RECEIVED THIS DOCUMENT FROM ANY OTHER SOURCE, PLEASE TAKE INTO CONSIDERATION THAT ALTERATIONS
 COULD HAVE BEEN MADE, FOR AN ORIGINAL COPY, PLEASE CONTACT BRAY VALVE AT 281-894-5454

Valve Size	A	B	C	D	E	F	Top BC	Plate No. of Holes	Drilling Hole Diameter	G	H	J	Key Size	K	L	Adapter Code	Weight (Kg)
550	647.7	153.9	539.8	611.1	511.0	210.1	165.1	4	20.6	63.5	63.5	101.6	15.9 x 15.9	521.0	419.1	F16-2	180
600	709.7	150.9	590.6	654.1	495.3	210.1	165.1	4	20.6	63.5	63.5	101.6	15.9 x 15.9	575.1	466.0	F16-2	189
650	749.3	165.1	621.3	706.9	554.5	300.0	254.0	8	18.0	63.5	63.5	101.6	15.9 x 15.9	601.2	478.3	F25-1	243
700	790.2	165.1	671.8	755.9	579.6	300.0	254.0	8	18.0	63.5	63.5	101.6	15.9 x 15.9	653.8	502.4	F25-1	261
750	868.4	166.6	744.0	812.8	584.2	300.0	254.0	8	18.0	76.2	63.5	101.6	15.9 x 15.9	728.2	528.6	F25-1	297
800	903.0	190.0	771.9	856.0	669.8	300.0	254.0	8	18.0	76.2	63.5	101.6	15.9 x 15.9	751.1	555.8	F25-1	353
850*	984.3	200.2	838.2	908.1	684.0	350.0	297.9	8	20.6	88.9	76.2	101.6	19.1 x 19.1	817.4	599.4	F30-1	407
900	1033.5	200.2	896.6	971.6	704.9	350.0	297.9	8	20.6	88.9	76.2	101.6	19.1 x 19.1	877.3	633.5	F30-1	461



Note 1: K dim is disc chordal dimension at valve face.
 Note 2: * denotes preliminary dimensions

17	SCREW	2			
16	RETAINER	1			
15	KEY	1			
14	SCREW	4			
13	GASKET	1			
12	THRUST BEARING	1			
11	LOCK WASHER	2			
10	NUT	2			
9	O-RING	2			
8	TAPER PIN	2			
7	BUSHING	1			
6	PACKING	1			
5	BOTTOM PLATE	1			
4	STEM	1			
3	DISC	1			
2	SEAT	1			
1	BODY	1			

ITEM No.	NAME	No. REQUIRED	SERIES/PART No.	MATERIAL	SPECIFICATION/REMARKS
----------	------	--------------	-----------------	----------	-----------------------

Valve Size _____ Pressure Rating _____
 Flg. Drilling _____
 Customer/Project _____
 Inq./P.O. No. _____
 Bray Order No. _____
 Certified Correct By _____ Date _____

PARTS LIST AND DIMENSIONS (Metric)
 BUTTERFLY VALVE, SERIES 32
 5 BAR SIZES 550mm THRU 900mm

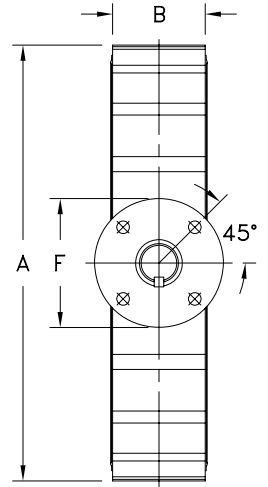
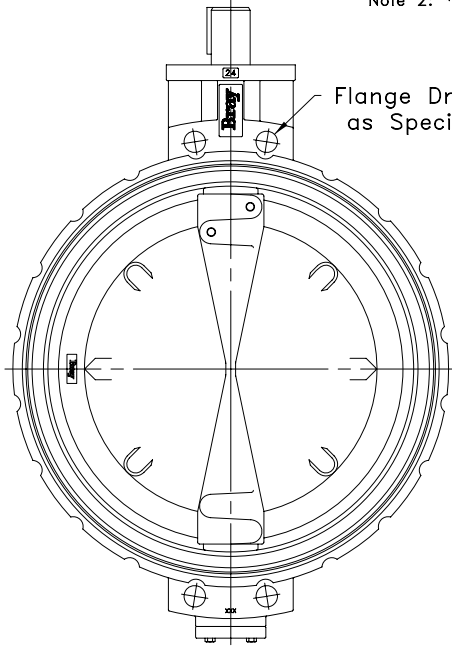
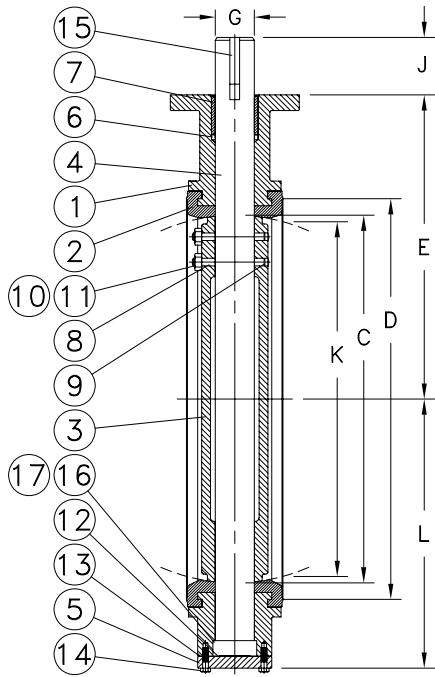
Bray CONTROLS
 A Division of BRAY INTERNATIONAL, Inc.

SHEET	REV.
1 OF 1	2
DRAWING NO.	
ES12A-0044	

ATTENTION

THIS DOCUMENT IS VALID IF AND ONLY IF YOU PERSONALLY DOWNLOADED IF FROM WWW.BRAY.COM
 IF YOU RECEIVED THIS DOCUMENT FROM ANY OTHER SOURCE, PLEASE TAKE INTO CONSIDERATION THAT ALTERATIONS
 COULD HAVE BEEN MADE, FOR AN ORIGINAL COPY, PLEASE CONTACT BRAY VALVE AT 281-894-5454

Valve Size	A	B	C	D	E	F	Top Plate BC	Drilling No. of Holes	Hole Diameter	G	J	Key Size	K	L	Adapter Code	Weight (Kg)
550	647.7	153.9	539.8	611.1	511.0	210.1	165.1	4	20.6	63.5	101.6	15.9 x 15.9	522.2	419.1	F16-2	180
600	709.7	150.9	590.6	654.1	495.3	210.1	165.1	4	20.6	63.5	101.6	15.9 x 15.9	576.3	466.0	F16-2	189
650	749.3	165.1	621.3	706.9	554.5	300.0	254.0	8	18.0	63.5	101.6	15.9 x 15.9	602.2	478.3	F25-1	243
700	790.2	165.1	671.8	755.9	579.6	300.0	254.0	8	18.0	63.5	101.6	15.9 x 15.9	654.8	502.4	F25-1	261
750	868.4	166.6	744.0	812.8	584.2	300.0	254.0	8	18.0	76.2	101.6	19.1 x 19.1	729.7	528.6	F25-2	297
800	903.0	190.0	771.9	856.0	669.8	300.0	254.0	8	18.0	76.2	101.6	19.1 x 19.1	752.1	555.8	F25-2	353
850*	984.3	200.2	838.2	908.1	684.0	350.0	297.9	8	20.6	88.9	133.4	22.2 x 15.9	818.4	599.4	F30-2	407
900	1033.5	200.2	896.6	971.6	704.9	350.0	297.9	8	20.6	88.9	133.4	22.2 x 15.9	878.8	633.5	F30-2	461



Note 1: K dim is disc chordal dimension at valve face.
 Note 2: * denotes preliminary dimensions

17	SCREW	2			
16	RETAINER	1			
15	KEY	1			
14	SCREW	4			
13	GASKET	1			
12	THRUST BEARING	1			
11	LOCK WASHER	2			
10	NUT	2			
9	O-RING	2			
8	TAPER PIN	2			
7	BUSHING	1			
6	PACKING	1			
5	BOTTOM PLATE	1			
4	STEM	1			
3	DISC	1			
2	SEAT	1			
1	BODY	1			

ITEM No.	NAME	No. REQUIRED	SERIES/PART No.	MATERIAL	SPECIFICATION/REMARKS
----------	------	--------------	-----------------	----------	-----------------------

Valve Size _____ Pressure Rating _____
 Flg. Drilling _____
 Customer/Project _____
 Inq./P.O. No. _____
 Bray Order No. _____
 Certified Correct By _____ Date _____

PARTS LIST AND DIMENSIONS (Metric)
 BUTTERFLY VALVE, SERIES 33
 10 BAR SIZES 550mm THRU 900mm

Bray CONTROLS
 A Division of BRAY INTERNATIONAL, Inc.

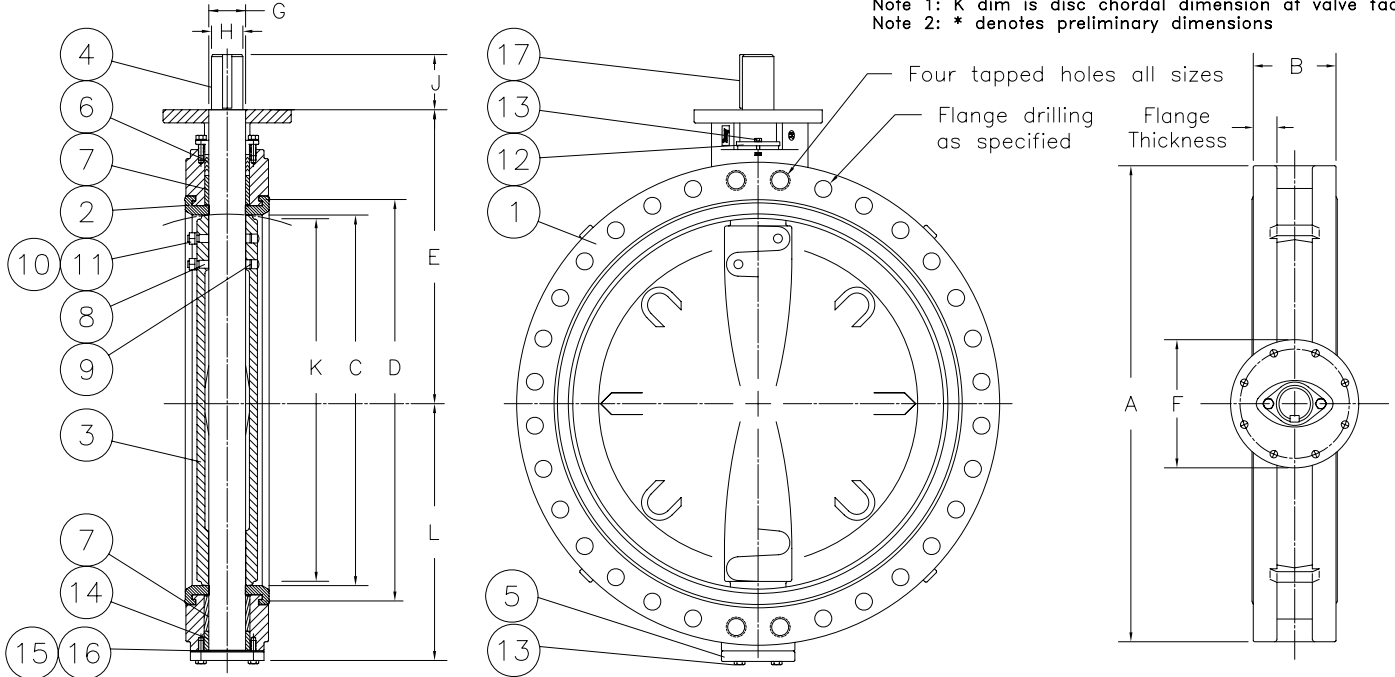
SHEET	REV.
1 OF 1	2
DRAWING NO.	
ES12A-0046	

ATTENTION

THIS DOCUMENT IS VALID IF AND ONLY IF YOU PERSONALLY DOWNLOADED IF FROM WWW.BRAY.COM
IF YOU RECEIVED THIS DOCUMENT FROM ANY OTHER SOURCE, PLEASE TAKE INTO CONSIDERATION THAT ALTERATIONS
COULD HAVE BEEN MADE, FOR AN ORIGINAL COPY, PLEASE CONTACT BRAY VALVE AT 281-894-5454

Valve Size	A	B	Flange Thk.	C	D	E	F	Top BC	Plate No. of Holes	Drilling Hole Diameter	G	H	J	Key Size	K	L	Adptr. Code	Weight (Kg.)
550*	749.3	153.9	38.1	539.8	611.1	511.0	210.1	165.1	4	20.6	63.5	63.5	101.6	15.9x15.9	521.0	419.1	F16-2	214
600	838.2	150.9	37.3	590.6	654.1	495.3	210.1	165.1	4	20.6	63.5	63.5	101.6	15.9x15.9	575.1	446.0	F16-2	225
650	895.4	165.1	40.4	621.3	706.9	554.5	300.0	254.0	8	18.0	63.5	63.5	101.6	15.9x15.9	601.2	478.3	F25-1	304
700	960.1	165.1	40.4	671.8	755.9	579.6	300.0	254.0	8	18.0	63.5	63.5	101.6	15.9x15.9	653.8	502.4	F25-1	331
750	984.3	166.6	44.5	744.0	812.8	584.2	300.0	254.0	8	18.0	76.2	63.5	101.6	15.9x15.9	728.2	528.6	F25-1	385
800	1060.5	190.0	50.8	771.9	856.0	669.8	300.0	254.0	8	18.0	76.2	63.5	101.6	15.9x15.9	751.1	555.8	F25-1	454
850	1135.1	200.2	50.8	838.2	908.1	684.0	350.0	297.9	8	20.6	88.9	76.2	101.6	19.1x19.1	817.4	599.4	F30-1	524
900	1168.4	200.2	50.8	896.6	971.6	704.9	350.0	297.9	8	20.6	88.9	76.2	101.6	19.1x19.1	877.3	633.5	F30-1	594

Note 1: K dim is disc chordal dimension at valve face.
Note 2: * denotes preliminary dimensions



17	Key	1			
16	Gasket	1			
15	Thrust Bearing	1			
14	Retainer	1			
13	Screw	6			
12	Packing Gland	1			
11	Washer	2			
10	Nut	2			
9	O-Ring	2			
8	Taper Pin	2			
7	Bearing	2			
6	Packing	1			
5	Bottom Plate	1			
4	Stem	1			
3	Disc	1			
2	Seat	1			
1	Body	1			

ITEM No.	NAME	No. REQUIRED	SERIES/PART No.	MATERIAL	SPECIFICATION/REMARKS
----------	------	--------------	-----------------	----------	-----------------------

Valve Size _____ Pressure Rating _____
 Flg. Drilling _____
 Customer/Project _____
 Inq./P.O. No. _____
 Bray Order No. _____
 Certified Correct By _____ Date _____

PARTS LIST AND DIMENSIONS (Metric)
 BUTTERFLY VALVE, SERIES 35
 5 BAR SIZES 550mm THRU 900mm

Bray CONTROLS
A Division of BRAY INTERNATIONAL, Inc.

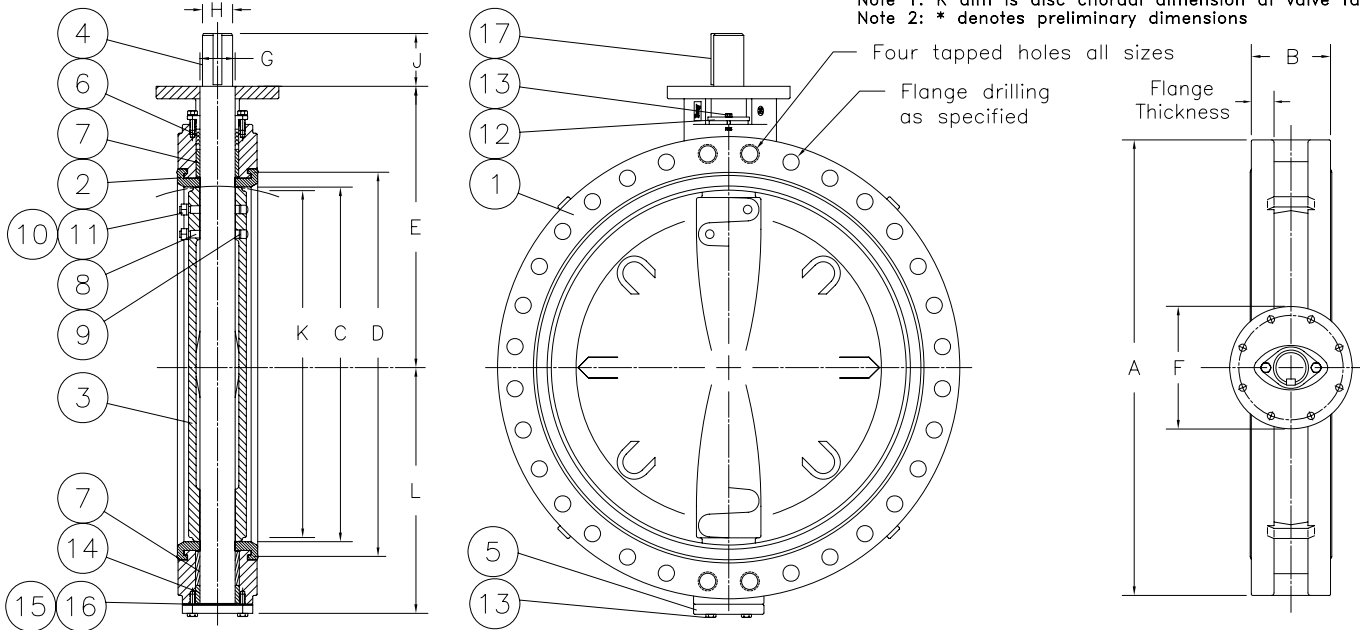
SHEET 1 OF 1	REV. 3
DRAWING NO. ES12A-0048	

ATTENTION

THIS DOCUMENT IS VALID IF AND ONLY IF YOU PERSONALLY DOWNLOADED IF FROM WWW.BRAY.COM
IF YOU RECEIVED THIS DOCUMENT FROM ANY OTHER SOURCE, PLEASE TAKE INTO CONSIDERATION THAT ALTERATIONS
COULD HAVE BEEN MADE, FOR AN ORIGINAL COPY, PLEASE CONTACT BRAY VALVE AT 281-894-5454

Valve Size	A	B	Flange Thk.	C	D	E	F	Top BC	Plate No. of Holes	Drilling Hole Diameter	G	H	J	Key Size	K	L	Adptr. Code	Weight (Kg.)
1000	1289.1	215.9	50.0	974.6	1056.1	781.8	350.0	297.9	8	20.6	101.6	88.9	133.4	22.2x15.9	951.2	674.6	F30-2	963
1050	1346.2	251.0	66.5	1047.8	1124.0	812.8	350.0	297.9	8	20.6	101.6	88.9	133.4	22.2x15.9	1021.1	706.4	F30-2	1148
1100	1403.4	251.0	66.5	1098.6	1174.8	841.2	350.0	297.9	8	20.6	101.6	88.9	133.4	22.2x15.9	1071.9	738.1	F30-2	1260
1150*	1454.2	276.4	63.5	1149.4	1234.9	886.0	350.0	297.9	8	20.6	127.0	101.6	133.4	25.4x19.1	1119.6	762.0	F30-3	1384
1200	1511.3	276.4	69.9	1200.2	1285.7	914.4	415.0	356.1	8	33.0	127.0	101.6	133.4	25.4x19.1	1171.7	788.9	F35-1	1440
1400	1752.6	390.1	76.2	1374.6	1460.5	1031.7	350.0	297.9	8	20.6	152.4	127.0	133.4	31.8x19.1	1317.8	944.6	F30-4	2700
1500*	1854.2	381.0	79.2	1505.0	1622.6	1082.5	415.0	356.1	8	33.0	177.8	152.4	165.1	38.1x25.4	1460.8	1038.4	F35-2	3150
1650	2032.0	457.2	82.6	1654.6	1775.2	1234.9	415.0	356.1	8	33.0	177.8	152.4	165.1	38.1x25.4	1597.9	1131.8	F35-2	3600
1800	2197.1	457.2	88.9	1758.7	1873.3	1327.2	475.0	405.9	8	39.6	215.9	190.5	203.2	44.4x38.1	1702.6	1205.0	F40-2	5062

Note 1: K dim is disc chordal dimension at valve face.
Note 2: * denotes preliminary dimensions



17	Key	1			
16	Gasket	1			
15	Thrust Bearing	1			
14	Retainer	1			
13	Screw	6			
12	Packing Gland	1			
11	Washer	2			
10	Nut	2			
9	O-Ring	2			
8	Taper Pin	2			
7	Bearing	2			
6	Packing	1			
5	Bottom Plate	1			
4	Stem	1			
3	Disc	1			
2	Seat	1			
1	Body	1			

ITEM No.	NAME	No. REQUIRED	SERIES/PART No.	MATERIAL	SPECIFICATION/REMARKS
----------	------	--------------	-----------------	----------	-----------------------

Valve Size _____ Pressure Rating _____
 Flg. Drilling _____
 Customer/Project _____
 Inq./P.O. No. _____
 Bray Order No. _____
 Certified Correct By _____ Date _____

PARTS LIST AND DIMENSIONS (Metric)
 BUTTERFLY VALVE, SERIES 35
 5 BAR SIZES 1000mm THRU 1800mm



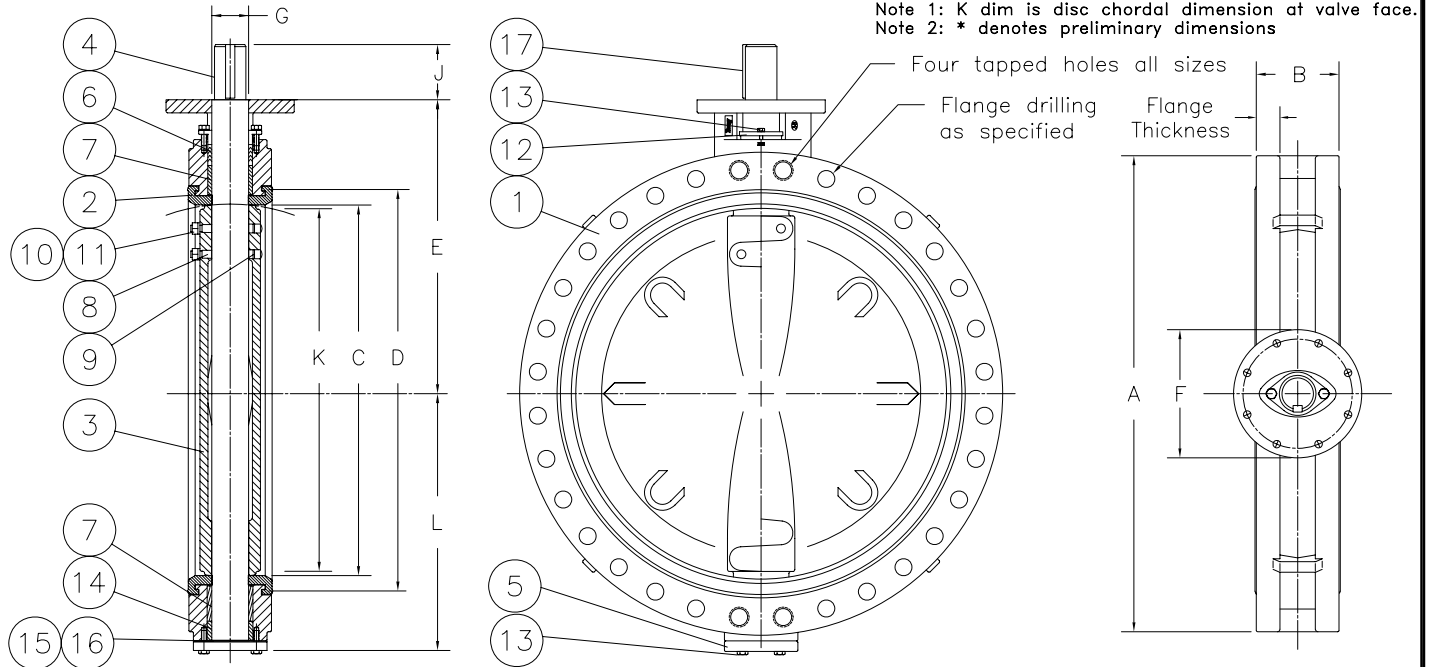
Bray CONTROLS
A Division of BRAY INTERNATIONAL, Inc.

SHEET	REV.
1 OF 1	1
DRAWING NO.	
ES12A-0049	

ATTENTION

THIS DOCUMENT IS VALID IF AND ONLY IF YOU PERSONALLY DOWNLOADED IF FROM WWW.BRAY.COM
IF YOU RECEIVED THIS DOCUMENT FROM ANY OTHER SOURCE, PLEASE TAKE INTO CONSIDERATION THAT ALTERATIONS
COULD HAVE BEEN MADE, FOR AN ORIGINAL COPY, PLEASE CONTACT BRAY VALVE AT 281-894-5454

Valve Size	A	B	Flange Thk.	C	D	E	F	Top BC	Plate No. of Holes	Drilling Hole Diameter	G	J	Key Size	K	L	Adptr. Code	Weight (Kg.)
550*	749.3	153.9	38.1	539.8	611.1	511.0	210.1	165.1	4	20.6	63.5	101.6	15.9x15.9	522.2	419.1	F16-2	214
600	838.2	150.9	37.3	590.6	654.1	495.3	210.1	165.1	4	20.6	63.5	101.6	15.9x15.9	576.3	446.0	F16-2	225
650	895.4	165.1	40.4	621.3	706.9	554.5	300.0	254.0	8	18.0	63.5	101.6	15.9x15.9	602.2	478.3	F25-1	304
700	960.1	165.1	40.4	671.8	755.9	579.6	300.0	254.0	8	18.0	63.5	101.6	15.9x15.9	654.8	502.4	F25-1	331
750	984.3	166.6	44.5	744.0	812.8	584.2	300.0	254.0	8	18.0	76.2	101.6	19.1x19.1	729.7	528.6	F25-2	385
800	1060.5	190.0	50.8	771.9	856.0	669.8	300.0	254.0	8	18.0	76.2	101.6	19.1x19.1	752.1	555.8	F25-2	454
850	1135.1	200.2	50.8	838.2	908.1	684.0	350.0	297.9	8	20.6	88.9	133.4	22.2x15.9	818.4	599.4	F30-2	524
900	1168.4	200.2	50.8	896.6	971.6	704.9	350.0	297.9	8	20.6	88.9	133.4	22.2x15.9	878.8	633.5	F30-2	594



17	Key	1			
16	Gasket	1			
15	Thrust Bearing	1			
14	Retainer	1			
13	Screw	6			
12	Packing Gland	1			
11	Washer	2			
10	Nut	2			
9	O-Ring	2			
8	Taper Pin	2			
7	Bearing	2			
6	Packing	1			
5	Bottom Plate	1			
4	Stem	1			
3	Disc	1			
2	Seat	1			
1	Body	1			

ITEM No.	NAME	No. REQUIRED	SERIES/PART No.	MATERIAL	SPECIFICATION/REMARKS
----------	------	--------------	-----------------	----------	-----------------------

Valve Size _____ Pressure Rating _____	PARTS LIST AND DIMNENSIONS (Metric) BUTTERFLY VALVE, SERIES 36 10 BAR SIZES 550mm THRU 900mm
Flg. Drilling _____	
Customer/Project _____	
Inq./P.O. No. _____	
Bray Order No. _____	A Division of BRAY INTERNATIONAL, Inc.
Certified Correct By _____ Date _____	

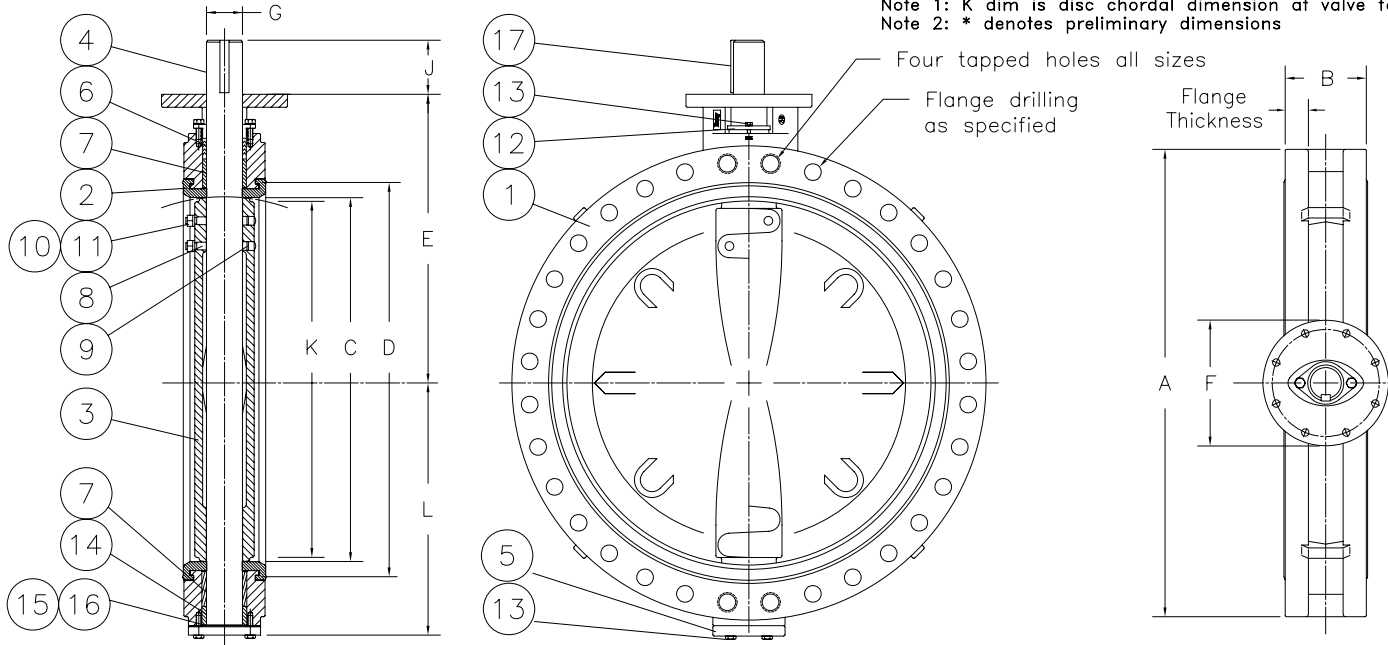
SHEET	REV.
1 OF 1	3
DRAWING NO.	
ES12A-0050	

ATTENTION

THIS DOCUMENT IS VALID IF AND ONLY IF YOU PERSONALLY DOWNLOADED IF FROM WWW.BRAY.COM
 IF YOU RECEIVED THIS DOCUMENT FROM ANY OTHER SOURCE, PLEASE TAKE INTO CONSIDERATION THAT ALTERATIONS
 COULD HAVE BEEN MADE, FOR AN ORIGINAL COPY, PLEASE CONTACT BRAY VALVE AT 281-894-5454

Valve Size	A	B	Flange Thk.	C	D	E	F	Top BC	Plate No. of Holes	Drilling Hole Diameter	G	J	Key Size	K	L	Adptr. Code	Weight (Kg.)
1000	1289.1	215.9	50.0	974.6	1056.1	781.8	350.0	297.9	8	20.6	101.6	133.4	25.4x19.1	1952.2	674.6	F30-3	963
1050	1346.2	251.0	66.5	1047.8	1124.0	812.8	350.0	297.9	8	20.6	101.6	133.4	25.4x19.1	1022.4	706.4	F30-3	1148
1100	1403.4	251.0	66.5	1098.6	1174.8	841.2	350.0	297.9	8	20.6	101.6	133.4	25.4x19.1	11073.2	738.1	F30-3	1260
1150*	1454.2	276.4	63.5	1149.4	1234.9	886.0	350.0	297.9	8	20.6	127.0	152.4	31.8x19.1	1120.6	762.0	F30-3	1384
1200	1511.3	276.4	69.9	1200.2	1285.7	914.4	415.0	356.1	8	33.0	127.0	152.4	31.8x19.1	1173.0	788.9	F35-4	1440
1400	1752.6	390.1	76.2	1374.6	1460.5	1031.7	415.0	356.1	8	33.0	152.4	165.1	38.1x25.4	1317.8	944.6	F30-4	2700
1500*	1854.2	381.0	79.2	1505.0	1622.6	1082.5	475.0	405.9	8	39.6	177.8	165.1	44.4x38.1	1462.0	1038.4	F35-2	3150
1650	2032.0	457.2	82.6	1654.6	1775.2	1234.9	475.0	405.9	8	39.6	177.8	165.1	44.4x38.1	1599.7	1131.8	F35-2	3600
1800	2197.1	457.2	88.9	1758.7	1873.3	1327.2	560.1	483.1	12	39.6	215.9	254.0	50.8x38.1	1703.8	1205.0	F40-2	5062

Note 1: K dim is disc chordal dimension at valve face.
 Note 2: * denotes preliminary dimensions



17	Key	1			
16	Gasket	1			
15	Thrust Bearing	1			
14	Retainer	1			
13	Screw	6			
12	Packing Gland	1			
11	Washer	2			
10	Nut	2			
9	O-Ring	2			
8	Taper Pin	2			
7	Bearing	2			
6	Packing	1			
5	Bottom Plate	1			
4	Stem	1			
3	Disc	1			
2	Seat	1			
1	Body	1			

ITEM No.	NAME	No. REQUIRED	SERIES/PART No.	MATERIAL	SPECIFICATION/REMARKS
----------	------	--------------	-----------------	----------	-----------------------

Valve Size _____ Pressure Rating _____
 Flg. Drilling _____
 Customer/Project _____
 Inq./P.O. No. _____
 Bray Order No. _____
 Certified Correct By _____ Date _____

PARTS LIST AND DIMNENSIONS (Metric)
 BUTTERFLY VALVE, SERIES 36
 10 BAR SIZES 1000mm THRU 1800mm

Bray CONTROLS
 A Division of BRAY INTERNATIONAL, Inc.

SHEET 1 OF 1	REV. 1
DRAWING NO. ES12A-0051	