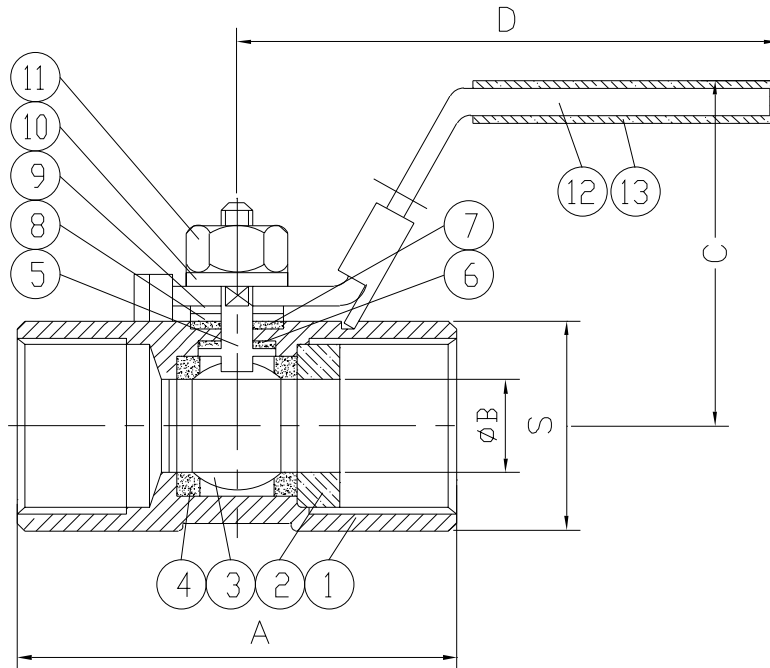


SIZE	A	B	C	D	S
1/4"	1.535	0.197	0.984	2.835	0.669
3/8"	1.732	0.283	1.181	3.209	0.827
1/2"	2.224	0.362	1.772	3.937	0.984
3/4"	2.323	0.492	1.929	3.937	1.260
1"	2.795	0.591	1.969	4.134	1.496
1-1/4"	3.071	0.787	2.087	4.134	1.890
1-1/2"	3.228	0.984	2.520	5.315	2.087
2"	3.937	1.260	2.756	5.315	2.520



13	HANDLE SLEEVE	VINYL	1
12	LEVER HANDLE	SS304	1
11	NUT	SS304	1
10	SPRING WASHER	SS301	1
9	CONICAL SPRING WASHER	SS300	1
8	GLAND WASHER	SS304	1
7	STEM SEAL	REINFORCED PTFE	1
6	STEM	ASTM A479 Gr. 316	1
5	THRUST BEARING	REINFORCED PTFE	1
4	SEAT	REINFORCED PTFE	2
3	BALL	ASTM A351 CF8M	1
2	INSERT	ASTM A351 CF8M	1
1	BODY	ASTM A351 CF8M	1
NO	PART	MATERIAL	Qty

<b>FLOW-TEK, INC.</b> 11850 Tanner Road Houston, Texas 77041		TEL: 832-912-2300 FAX: 832-912-2301	SERIES # <b>S40</b>
DRAWING TITLE : <b>1/4"-2" S40 Assembly Drawing</b>			SIZE : <b>1/4"-2"</b>
SCALE : <b>N.T.S.</b>	DRAWN BY : <b>M.G.</b>	REV. LEVEL	
DATE : <b>Sept. 19, 2003</b>	APPROVED BY : <b>WSB</b>	<b>00</b>	
CUSTOMER :		DRAWING NO. : <b>S40-SD</b>	