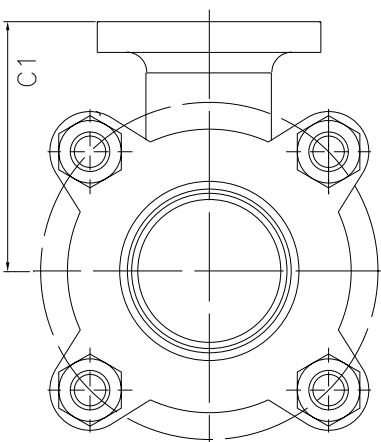


(3 notches for 2-1/2")



BILL OF MATERIAL

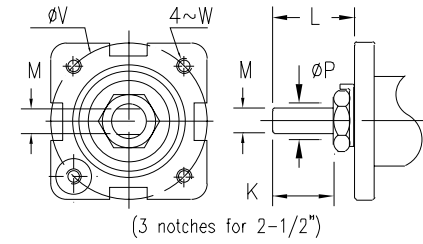
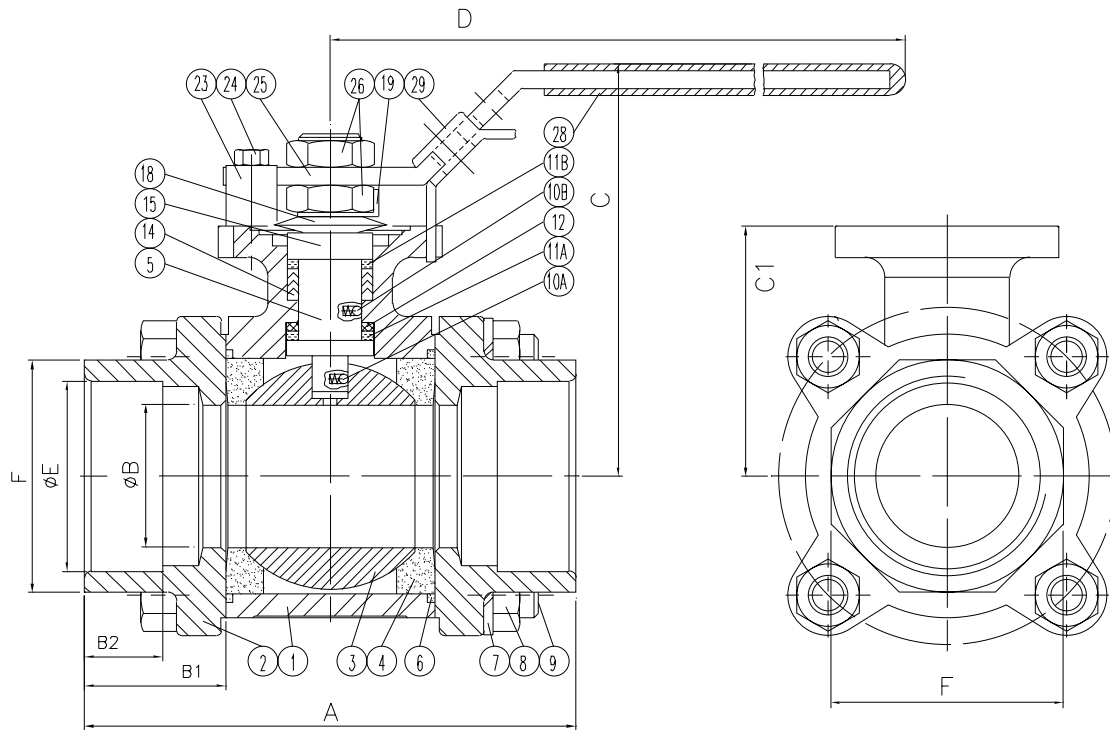
NO.	PART NAME	QTY	7000	8000
29	LOCATING LOCK	1	SS304	
28	PLASTIC COVER	1	VINYL	
26	LEVER NUT	2	SS304	
25	HANDLE	1	SS304	
24	VALVE STOP-BOLT	1	SS304	
23	VALVE STOP-SET SLEEVE	1	SS304	
19	TAB WASHER	1	SS304	
18	BELLEVILLE WASHER	2	SS301	
15	PK CLD SLEEVE	1	SS304	
14	STEM PACKING	3	15% RPTFE	
12	THRUST WASHER	1	50% PTFE + 50% 316	
11B	PACKING PROTECTOR	1	PEEK	
11A	WASHER PROTECTOR	1	PEEK	
10	ANTI-STATIC	2	SS316	
9	BODY BOLT	Note	SS304	
8	BODY NUT	Note	SS304	
7	SPRING WASHER	Note	SS304	
6	BODY SEAL	2	15% RPTFE	
5	STEM	1	ASTM A479 Gr.316	
4	SEAT	2	15% RPTFE	
3	BALL	1	A351-CF8M	
2	CAP	2	A351-CF3M A216-WCB	
1	BODY	1	A351-CF8M A216-WCB	

Note:
1/2"-2": 4
2-1/2": 8

For 2-1/2" size, item 4 & 6 are in one piece;
For 2-1/2" size, item 23 & 24 are one piece casted on valve pad

SIZE	A	B	C	D	B1	C1	E	F	M	P	K	L	V	W
1/2"	2.839	0.591	2.598	6.496	0.898	1.535	0.622	0.840	0.25	0.375	0.36	0.62	1.654	10-24UNC
3/4"	3.346	0.787	2.913	6.496	1.020	1.656	0.824	1.050	0.25	0.375	0.36	0.55	1.654	10-24UNC
1"	3.620	1.000	3.425	7.874	1.068	2.047	1.049	1.315	0.315	0.438	0.50	0.80	1.969	1/4-20UNC
1-1/4"	4.331	1.260	3.622	7.874	1.244	2.205	1.380	1.660	0.315	0.438	0.46	0.72	1.969	1/4-20UNC
1-1/2"	4.843	1.496	4.134	9.843	1.280	2.598	1.610	1.900	0.374	0.625	0.55	0.92	2.756	5/16-18UNC
2"	5.591	2.000	4.528	9.843	1.425	2.953	2.067	2.375	0.374	0.625	0.50	0.87	2.756	5/16-18UNC
2-1/2"	7.264	2.559	5.039	9.646	1.949	3.386	2.469	2.875	0.472	0.750	0.82	1.22	4.016	5/16-18UNC

FLOW-TEK, INC.		SERIES # 7000/8000
11850 Tanner Road Houston, Texas 77041		TEL: 832-912-2300 FAX: 832-912-2301
SIZE : 1/2"-2-1/2"		
DRAWING TITLE : 7000/8000 Series w/ Sch. 40 Butt Weld End		
SCALE : NTS	DRAWN BY : MG	REV. LEVEL : 00
Feb. 05, 2004	APPROVED BY : WSB	
CUSTOMER :	DRAWING NO. : 7303(7309)-SD	



BILL OF MATERIAL

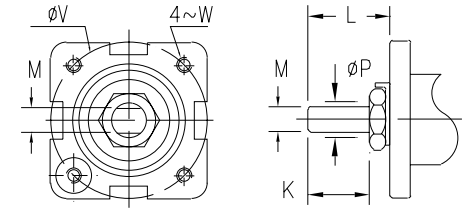
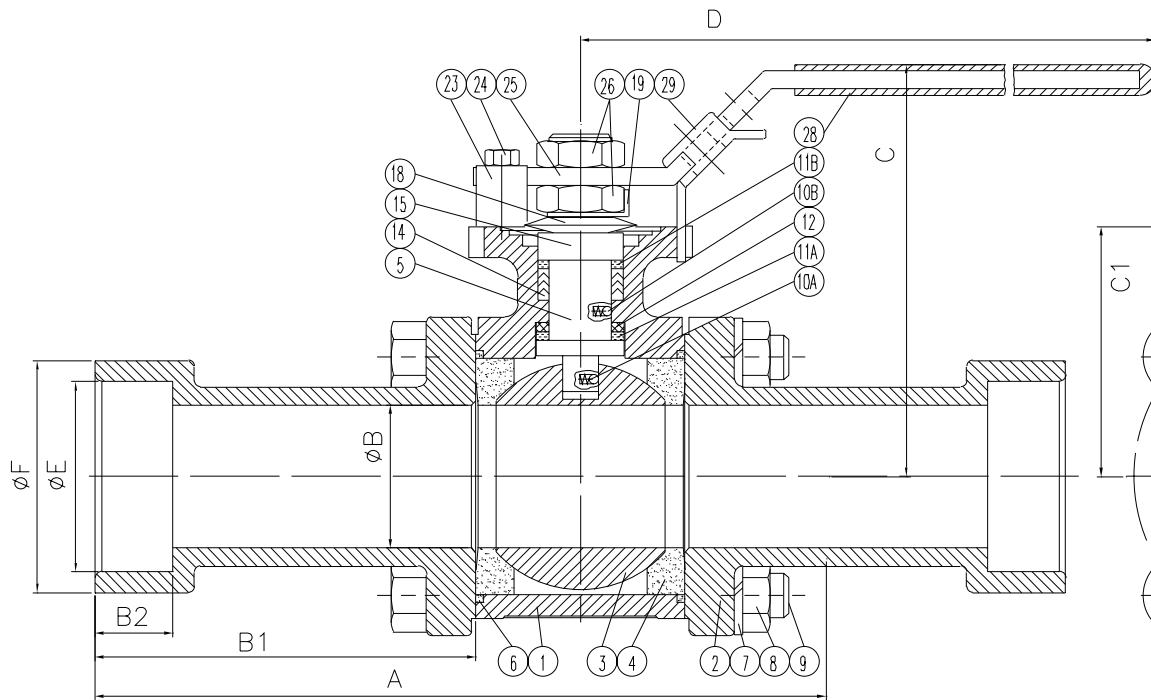
NO.	PART NAME	Q'TY	7000	8000
29	LOCATING LOCK	1	SS304	
28	PLASTIC COVER	1	VINYL	
26	LEVER NUT	2	SS304	
25	HANDLE	1	SS304	
24	VALVE STOP-BOLT	1	SS304	
23	VALVE STOP-SET SLEEVE	1	SS304	
19	TAB WASHER	1	SS304	
18	BELLEVILLE WASHER	2	SS301	
15	PK GLD SLEEVE	1	SS304	
14	STEM PACKING	3	15% RPTFE	
12	THRUST WASHER	1	50% PTFE + 50% 316	
11B	PACKING PROTECTOR	1	PEEK	
11A	WASHER PROTECTOR	1	PEEK	
10	ANTI-STATIC	2	SS316	
9	BODY BOLT	Note	SS304	
8	BODY NUT	Note	SS304	
7	SPRING WASHER	Note	SS304	
6	BODY SEAL	2	15% RPTFE	
5	STEM	1	ASTM A479 Gr.316	
4	SEAT	2	15% RPTFE	
3	BALL	1	A351-CF8M	
2	CAP	2	A351-CF8M	A216-WCB
1	BODY	1	A351-CF8M	A216-WCB

Note:
 1/2"-2": 4
 2-1/2": 8

For 2-1/2" size, item 4 & 6 are in one piece;
 For 2-1/2" size, item 23 & 24 are one piece casted on valve pad

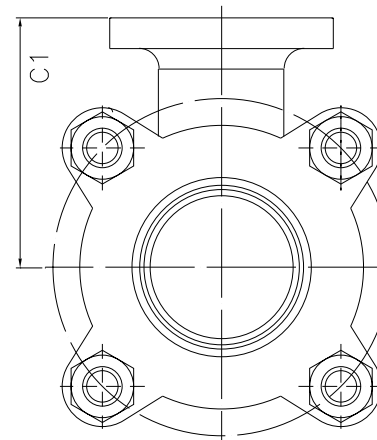
SIZE	A	B	C	D	B1	B2	C1	E	F	M	P	K	L	V	W
1/2"	2.839	0.591	2.598	6.496	0.898	0.500	1.535	0.854	1.102	0.25	0.375	0.36	0.62	1.654	10-24UNC
3/4"	3.346	0.787	2.913	6.496	1.020	0.563	1.656	1.067	1.390	0.25	0.375	0.36	0.55	1.654	10-24UNC
1"	3.620	1.000	3.425	7.874	1.068	0.626	2.047	1.331	1.654	0.315	0.438	0.50	0.80	1.969	1/4-20UNC
1-1/4"	4.331	1.260	3.622	7.874	1.244	0.689	2.205	1.677	2.047	0.315	0.438	0.46	0.72	1.969	1/4-20UNC
1-1/2"	4.843	1.496	4.134	9.843	1.280	0.752	2.598	1.913	2.362	0.374	0.625	0.55	0.92	2.756	5/16-18UNC
2"	5.591	2.000	4.528	9.843	1.425	0.874	2.953	2.406	2.913	0.374	0.625	0.50	0.87	2.756	5/16-18UNC
2-1/2"	7.264	2.559	5.039	9.646	1.949	0.982	3.386	2.906	3.386	0.472	0.750	0.82	1.22	4.016	5/16-18UNC

FLOW-TEK, INC.		SERIES # 7000/8000
11850 Tanner Road Houston, Texas 77041		TEL: 832-912-2300 FAX: 832-912-2301
DRAWING TITLE : 7000/8000 Series w/ Socket Weld End		SIZE : 1/2"-2-1/2"
SCALE : NTS	DRAWN BY : MC	REV. LEVEL
Feb. 05, 2004	APPROVED BY : WSB	00
CUSTOMER :	DRAWING NO. : 7203(7209)-SD	



(3 notches for 2-1/2")

Note:
1/2"-2": 4
2-1/2": 8



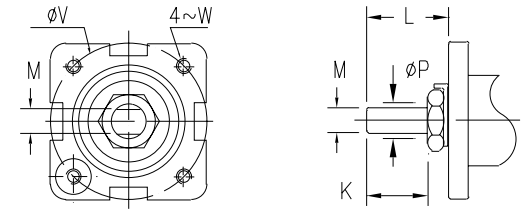
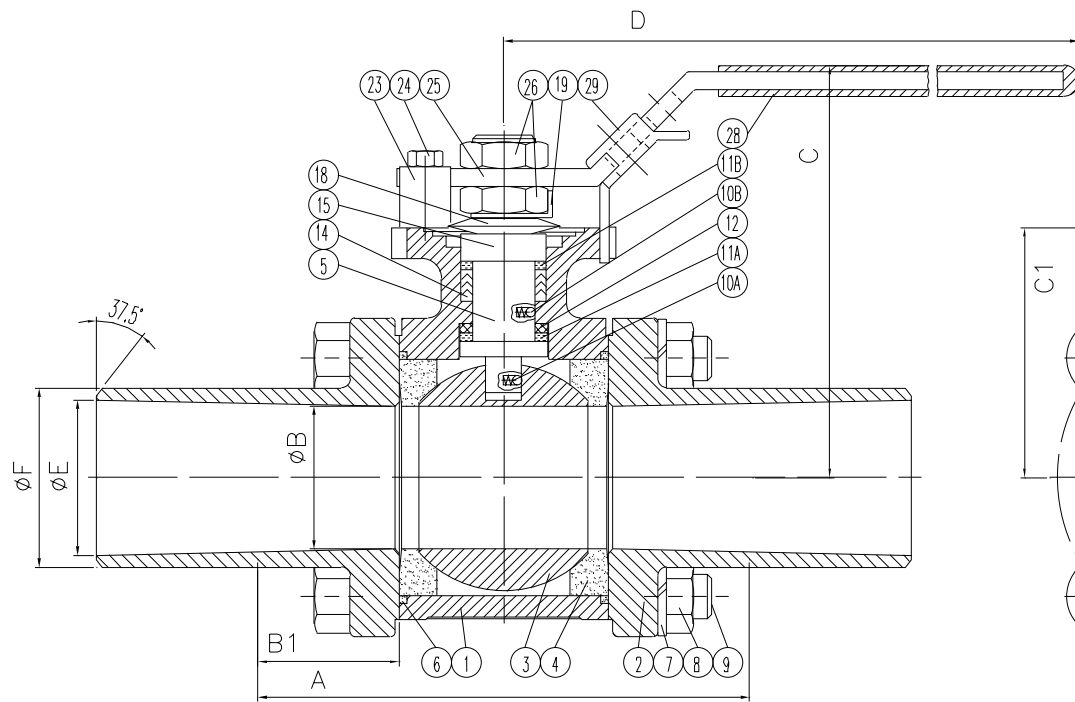
BILL OF MATERIAL

NO.	PART NAME	QTY	7000	8000
29	LOCATING LOCK	1	SS304	
28	PLASTIC COVER	1	VINYL	
26	LEVER NUT	2	SS304	
25	HANDLE	1	SS304	
24	VALVE STOP-BOLT	1	SS304	
23	VALVE STOP-SET SLEEVE	1	SS304	
19	TAB WASHER	1	SS304	
18	BELLEVILLE WASHER	2	SS301	
15	PK GLD SLEEVE	1	SS304	
14	STEM PACKING	3	15% RPTFE	
12	THRUST WASHER	1	50% PTFE + 50% 316	
11B	PACKING PROTECTOR	1	PEEK	
11A	WASHER PROTECTOR	1	PEEK	
10	ANTI-STATIC	2	SS316	
9	BODY BOLT	Note	SS304	
8	BODY NUT	Note	SS304	
7	SPRING WASHER	Note	SS304	
6	BODY SEAL	2	15% RPTFE	
5	STEM	1	ASTM A479 Gr.316	
4	SEAT	2	15% RPTFE	
3	BALL	1	A351-CF8M	
2	CAP	2	A351-CF3M A216-WCB	
1	BODY	1	A351-CF8M A216-WCB	

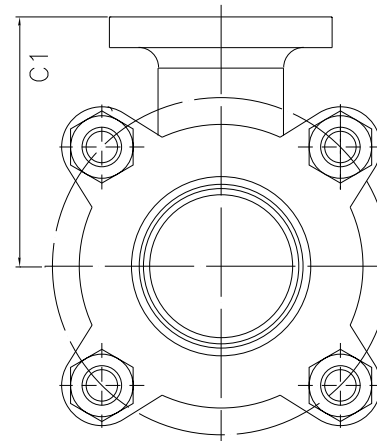
For 2-1/2" size, item 4 & 6 are in one piece;
For 2-1/2" size, item 23 & 24 are one piece casted on valve pad

SIZE	A	B	C	D	B1	C1	B2	E	F	M	P	K	L	V	W
1/2"	10.04	0.591	2.598	6.496	4.50	1.535	0.50	0.85	1.14	0.25	0.375	0.36	0.62	1.654	10-24UNC
3/4"	10.43	0.787	2.913	6.496	4.56	1.656	0.56	1.07	1.46	0.25	0.375	0.36	0.55	1.654	10-24UNC
1"	10.71	1.000	3.425	7.874	4.61	2.047	0.63	1.33	1.77	0.315	0.438	0.50	0.80	1.969	1/4-20UNC
1-1/4"	11.21	1.260	3.622	7.874	4.69	2.205	0.69	1.67	2.17	0.315	0.438	0.46	0.72	1.969	1/4-20UNC
1-1/2"	11.78	1.496	4.134	9.843	4.75	2.598	0.75	1.91	2.44	0.374	0.625	0.55	0.92	2.756	5/16-18UNC
2"	12.48	2.000	4.528	9.843	4.87	2.953	0.87	2.41	2.91	0.374	0.625	0.50	0.87	2.756	5/16-18UNC
2-1/2"	-	2.559	5.039	9.646	-	3.386	0.98	2.91	-	0.472	0.750	0.82	1.22	4.016	5/16-18UNC

FLOW-TEK, INC.		SERIES # 7000/8000
11850 Tanner Road Houston, Texas 77041		TEL: 832-912-2300 FAX: 832-912-2301
DRAWING TITLE : 7000/8000 Series w/ Extended Socket Weld End		
SCALE : NTS	DRAWN BY : MC	REV. LEVEL
DATE : Feb. 05, 2004	APPROVED BY : WSB	00
CUSTOMER :	DRAWING NO. : 7203(7209)-ExtendedSW-SD	



(3 notches for 2-1/2")



Note:
1/2"-2": 4
2-1/2": 8

BILL OF MATERIAL

NO.	PART NAME	Q'TY	7000	8000
29	LOCATING LOCK	1	SS304	
28	PLASTIC COVER	1	VINYL	
26	LEVER NUT	2	SS304	
25	HANDLE	1	SS304	
24	VALVE STOP-BOLT	1	SS304	
23	VALVE STOP-SET SLEEVE	1	SS304	
19	TAB WASHER	1	SS304	
18	BELLEVILLE WASHER	2	SS301	
15	PK GLD SLEEVE	1	SS304	
14	STEM PACKING	3	15% RPTFE	
12	THRUST WASHER	1	50% PTFE + 50% 316	
11B	PACKING PROTECTOR	1	PEEK	
11A	WASHER PROTECTOR	1	PEEK	
10	ANTI-STATIC	2	SS316	
9	BODY BOLT	Note	SS304	
8	BODY NUT	Note	SS304	
7	SPRING WASHER	Note	SS304	
6	BODY SEAL	2	15% RPTFE	
5	STEM	1	ASTM A479 Gr.316	
4	SEAT	2	15% RPTFE	
3	BALL	1	A351-CF8M	
2	CAP	2	A351-CF3M A216-WCB	
1	BODY	1	A351-CF8M A216-WCB	

SIZE	A	B	C	D	B1	C1	E	F	M	P	K	L	V	W
1/2"	9.04	0.591	2.598	6.496	4.00	1.535	0.622	0.840	0.25	0.375	0.36	0.62	1.654	10-24UNC
3/4"	9.30	0.787	2.913	6.496	4.00	1.656	0.824	1.050	0.25	0.375	0.36	0.55	1.654	10-24UNC
1"	9.48	1.000	3.425	7.874	4.00	2.047	1.049	1.315	0.315	0.438	0.50	0.80	1.969	1/4-20UNC
1-1/4"	9.84	1.260	3.622	7.874	4.00	2.205	1.380	1.660	0.315	0.438	0.46	0.72	1.969	1/4-20UNC
1-1/2"	10.28	1.496	4.134	9.843	4.00	2.598	1.610	1.900	0.374	0.625	0.55	0.92	2.756	5/16-18UNC
2"	10.73	2.000	4.528	9.843	4.00	2.953	2.067	2.375	0.374	0.625	0.50	0.87	2.756	5/16-18UNC
2-1/2"	-	2.559	5.039	9.646	-	3.386	2.469	2.875	0.472	0.750	0.82	1.22	4.016	5/16-18UNC

For 2-1/2" size, item 4 & 6 are in one piece;
For 2-1/2" size, item 23 & 24 are one piece casted on valve pad

FLOW-TEK, INC.		SERIES # 7000/8000
11850 Tanner Road Houston, Texas 77041		TEL: 832-912-2300 FAX: 832-912-2301
		SIZE : 1/2"-2-1/2"
DRAWING TITLE : 7000/8000 Series w/ Sch. 40 Extended Butt Weld End		
SCALE : NTS	DRAWN BY : MG	REV. LEVEL
DATE : Feb. 05, 2004	APPROVED BY : WSB	00
CUSTOMER :	DRAWING NO. : 7303(7309)-ExtendedBW-SD	