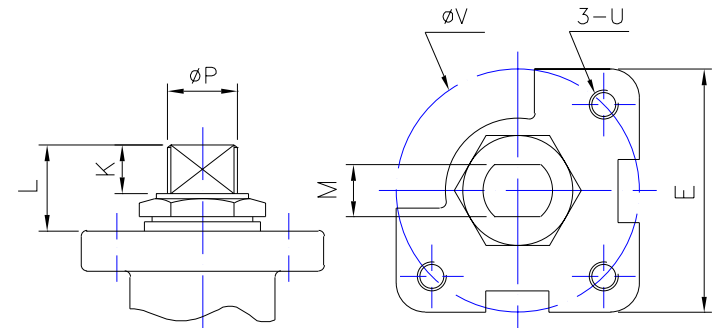


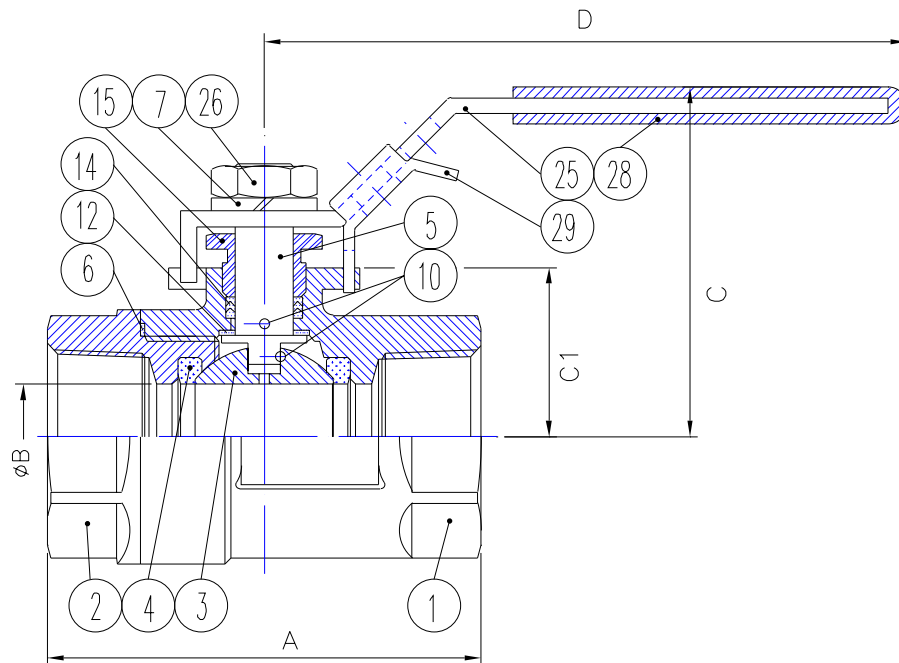
SIZE	A	B	C	C1	D	E	K	L	M	P	V	U
1/4"	2.17	0.44	2.17	0.93	6.50	1.65	0.39	0.59	0.250	0.37	1.65	#10-24UNC
3/8"	2.17	0.49	2.17	0.93	6.50	1.65	0.39	0.59	0.250	0.37	1.65	#10-24UNC
1/2"	2.56	0.59	2.17	0.93	6.50	1.65	0.39	0.59	0.250	0.37	1.65	#10-24UNC
3/4"	2.80	0.59	2.36	1.10	6.50	1.65	0.39	0.59	0.250	0.37	1.65	#10-24UNC
1"	3.23	0.79	2.68	1.38	7.28	1.65	0.47	0.71	0.256	0.44	1.65	#10-24UNC
1 1/4"	3.62	0.98	2.87	1.54	7.28	1.65	0.47	0.77	0.256	0.44	1.65	#10-24UNC
1 1/2"	4.06	1.26	3.35	1.87	7.87	1.97	0.57	0.94	0.374	0.62	1.97	1/4"-20UNC
2"	4.65	1.50	3.64	2.17	9.84	2.56	0.57	0.94	0.374	0.62	2.76	5/16"-18UNC
2 1/2"	5.39	2.00	3.94	2.46	9.84	2.56	0.57	0.94	0.374	0.62	2.76	5/16"-18UNC
3"	6.20	2.56	4.65	3.07	10.43	2.56	0.85	1.28	0.469	0.75	2.76	5/16"-18UNC



Bill of Material

No.	PART NAME	QTY	S90	S70
29	LOCKING DEVICE	1	SS304	SS304
28	HANDLE SLEEVE	1	VINYL	VINYL
26	NUT	1	SS304	SS304
25	HANDLE	1	SS304	SS304
15	PACKING GLAND	1	SS304	SS304
14	STEM PACKING	*	RTFE	RTFE
12	THRUST WASHER	1	RTFE	RTFE
10	ANTI-STATIC	1	SS316	SS316
7	SPRING WASHER	1	SS304	SS304
6	BODY SEAL	1	RTFE	RTFE
5	STEM	1	ASTM A479 Gr.316	ASTM A479 Gr.316
4	SEAT	2	RTFE	RTFE
3	BALL	1	ASTM A351 CF8M	ASTM A351 CF8M
2	END CAP	1	ASTM A216 Gr. WCB	ASTM A351 CF8M
1	BODY	1	ASTM A216 Gr. WCB	ASTM A351 CF8M

* 1/4" ~ 1" → 1; 1 1/4" ~ 2 1/2" → 2; 3" → 3.



FLOW-TEK, INC.		SERIES # S70/S90
11850 Tanner Road Houston, Texas 77041		TEL: 832-912-2300 FAX: 832-912-2301
		SIZE : 1/4"-3"
DRAWING TITLE : S70/S90 Ball Valve (w/ pad) Assembly Drawing		
SCALE : NTS	DRAWN BY : MG	REV. LEVEL
DATE : Jan. 29, 2004	APPROVED BY : WSB	00
CUSTOMER :	DRAWING NO. : S70(S90)-SD	