

29	LOCATING LOCK	1	SS304
28	PLASTIC COVER	1	PLASTIC
26	THIN NUT	2	SS304
25	HANDLE	1	SS304
24	VALVE STOP BOLT	1	SS304
23	VALVE STOP SET SLEEVE	1	SS304
19	TAB WASHER	1	SS304
18	BELLVILLE WASHER	2	SS301
15	PACKING GLAND SLEEVE	1	SS304
14	PACKING	3	PTFE
12	THRUST WASHER	1	PTFE
9	BOLT	4	SS304
8	NUT	4	SS304
7	SPRING WASHER	4	SS304
6	BODY SEAL	2	PTFE
5	STEM	1	ASTM A479 Gr. 316L
4	SEAT	2	PTFE
3	BALL	1	A351-CF3M
2	CAP	2	A351-CF3M
1	BODY	1	A351-CF3M
No.	Part Name	Qty	Material

SIZE	A	B	C	D	B1	C1	E	F	K	L	M	P	V	W
1/2"	3.60	0.37	2.60	6.50	1.28	0.984	0.37	0.98	0.35	0.61	0.25	0.375	1.654	10-24UNC
3/4"	4.11	0.62	2.60	6.50	1.54	0.984	0.62	0.98	0.35	0.61	0.25	0.375	1.654	10-24UNC
1"	4.48	0.87	2.91	6.50	1.59	1.984	0.87	1.98	0.40	0.61	0.25	0.375	1.654	10-24UNC
1-1/2"	5.06	1.37	3.62	7.87	1.56	1.984	1.37	1.98	0.51	0.80	0.315	0.438	1.969	1/4-20UNC
2"	5.75	1.87	4.53	9.84	1.50	2.516	1.87	2.52	0.62	0.94	0.374	0.625	2.756	5/16-18UNC

FLOW-TEK, INC.

11850 Tanner Road
Houston, Texas 77041

TEL: 832-912-2300
FAX: 832-912-2301

SERIES #
S7000

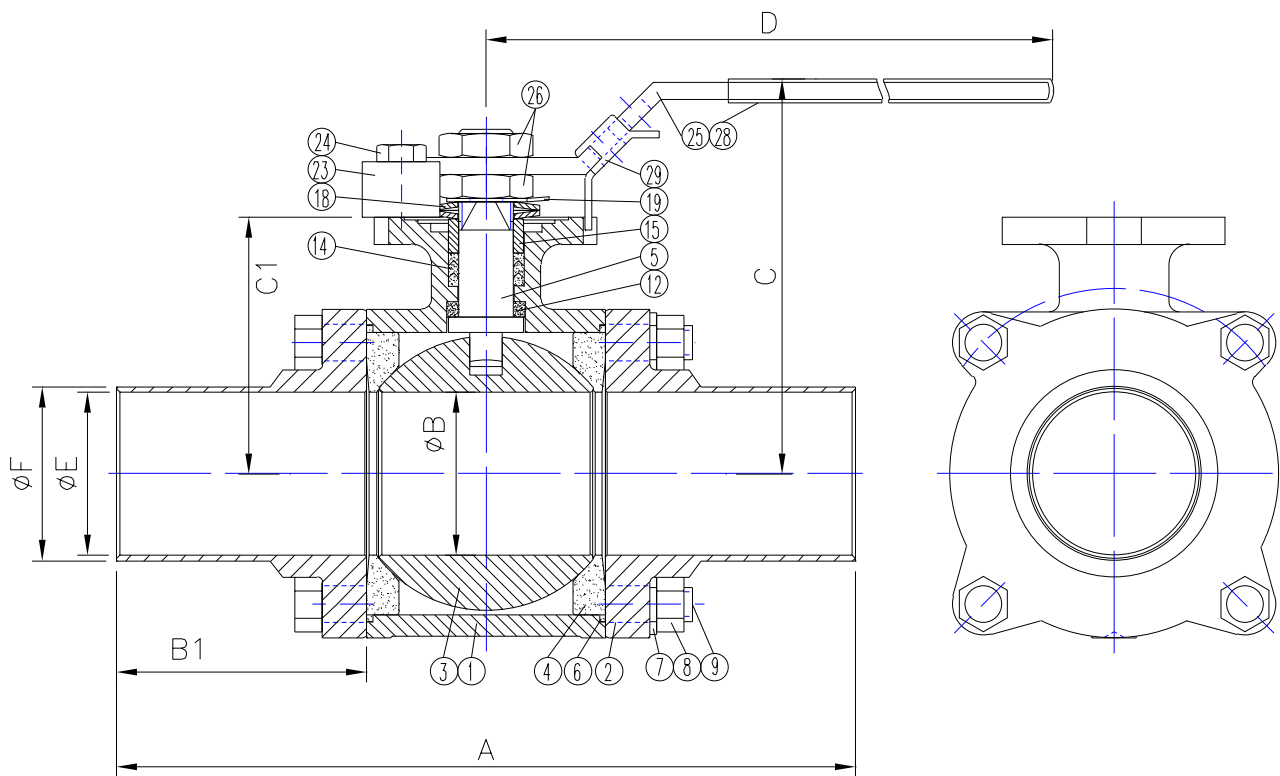
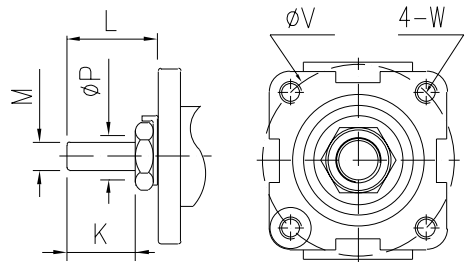
SIZE :
1/2"-2"

DRAWING TITLE : S7000 Series w/ Tri-Clamp End

SCALE : NTS DRAWN BY : MG REV LEVEL

DATE : Feb. 05, 2004 APPROVED BY : WSB OD

CUSTOMER : DRAWING NO. : S7503(7508)-SD



29	LOCATING LOCK	1	SS304
28	PLASTIC COVER	1	PLASTIC
26	THIN NUT	2	SS304
25	HANDLE	1	SS304
24	VALVE STOP BOLT	1	SS304
23	VALVE STOP SET SLEEVE	1	SS304
19	TAB WASHER	1	SS304
18	BELLVILLE WASHER	2	SS301
15	PACKING GLAND SLEEVE	1	SS304
14	PACKING	3	PTFE
12	THRUST WASHER	1	PTFE
9	BOLT	4	SS304
8	NUT	4	SS304
7	SPRING WASHER	4	SS304
6	BODY SEAL	2	PTFE
5	STEM	1	ASTM A479 Gr. 316L
4	SEAT	2	PTFE
3	BALL	1	A351-CF3M
2	CAP	2	A351-CF3M
1	BODY	1	A351-CF3M
No.	Part Name	Qty	Material

SIZE	A	B	C	D	B1	C1	E	F	K	L	M	P	V	W
1/2"	6.00	0.37	2.60	6.50	2.48	0.984	0.37	0.50	0.35	0.61	0.25	0.375	1.654	10-24UNC
3/4"	6.00	0.62	2.60	6.50	2.48	0.984	0.62	0.75	0.35	0.61	0.25	0.375	1.654	10-24UNC
1"	6.50	0.87	2.91	6.50	2.59	1.984	0.87	1.00	0.40	0.61	0.25	0.375	1.654	10-24UNC
1-1/2"	7.50	1.37	3.62	7.87	2.78	1.984	1.37	1.50	0.51	0.80	0.315	0.438	1.969	1/4-20UNC
2"	8.50	1.87	4.53	9.84	2.88	2.516	1.87	2.00	0.62	0.94	0.374	0.625	2.756	5/16-18UNC

FLOW-TEK, INC.		SERIES #
11850 Tanner Road Houston, Texas 77041		S7700
TEL: 832-912-2300 FAX: 832-912-2301		SIZE :
		1/2"-2"
DRAWING TITLE : S7000 Series with Extended Tube OD End		
SCALE : NTS	DRAWN BY : MG	REV. LEVEL
DATE : Feb. 05, 2004	APPROVED BY : WSB	OD
CUSTOMER :	DRAWING NO. : S7703(7708)-SD	