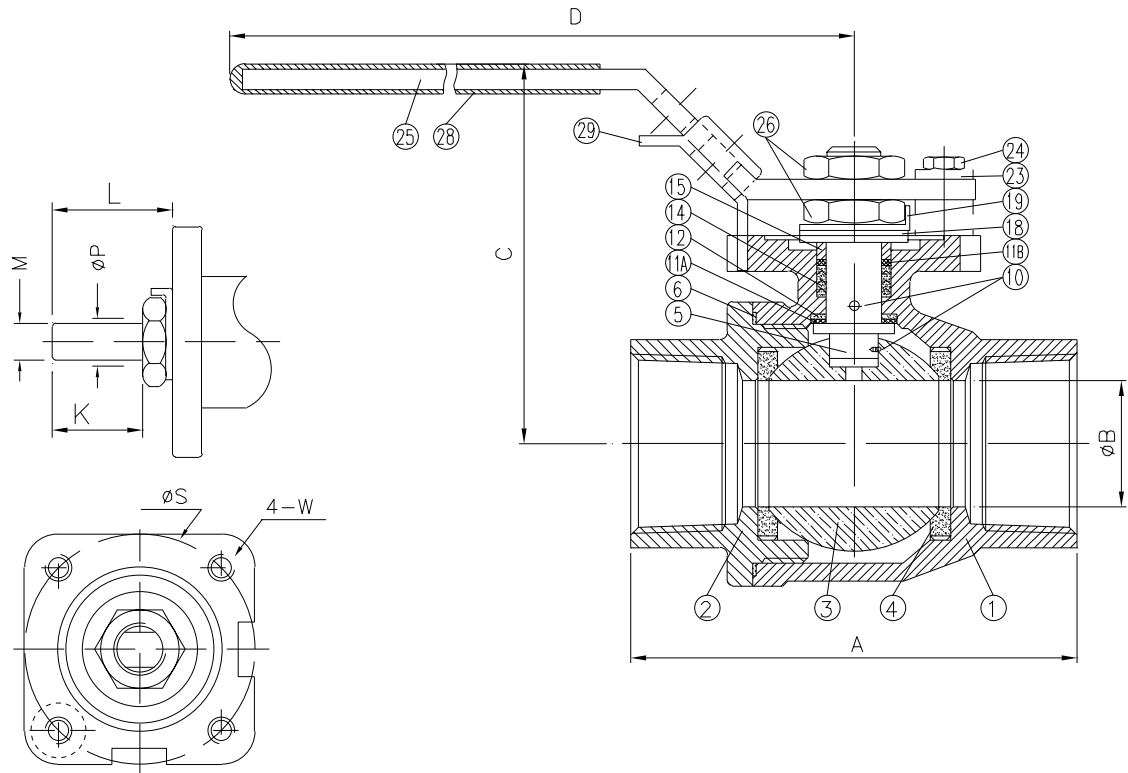


NO.	PART NAME	MATERIAL	Q'TY
1	BODY	ASTM A351 Gr. CF8M	1
2	CAP	ASTM A351 Gr. CF8M	1
3	BALL	ASTM A351 Gr. CF8M	1
4	SEAT	REINFORCED PTFE	2
5	STEM	ASTM A479 Gr. 316	1
6	Joint Gasket	PTFE	1
10	Anti-Static	SS316	2
11A	Washer Protector	Peek	1
11B	Packing Protector	Peek	1
12	Thrust Washer	50%PTFE+50%316	1
14	Stem Packing	PTFE	1~4
15	PK GLD Sleeve	SS-304	1
18	Belleville Washer	SS-301	2
19	Tab Washer	SS-304	1
23	VALVE STOP SET SLEEVE	SS-304	1
24	VALVE STOP BOLT	SS-304	1
25	HANDLE	SS-304	1
26	THIN NUT	SS-304	2
28	Plastic Sleeve	VINYL	1
29	LATCH	SS-304	1



Mounting Dimension

SIZE	A	B	C	D	K	L	M	P	S	W
1/2"	2.56	0.59	2.28	4.33	0.35	0.64	0.250	0.37	1.654	#10-24UNC
3/4"	2.99	0.79	2.60	6.30	0.35	0.64	0.250	0.37	1.654	#10-24UNC
1"	3.46	0.99	2.95	7.68	0.45	0.85	0.315	0.43	1.969	1/4-20UNC
1 1/4"	3.82	1.26	3.20	7.68	0.45	0.78	0.315	0.43	1.969	1/4-20UNC
1 1/2"	4.33	1.50	3.75	9.65	0.55	1.04	0.374	0.63	2.756	5/16-18UNC
2"	5.31	2.00	4.05	9.65	0.57	0.97	0.374	0.63	2.756	5/16-18UNC
2 1/2"	6.20	2.50	5.70	10.04	0.77	1.20	0.472	0.75	4.016	5/16-18UNC

<b>FLOW-TEK, INC.</b> 11850 Tanner Road Houston, Texas 77041		SERIES # S85
		SIZE : 1/2"-2-1/2"
DRAWING TITLE : S85 Assembly Drawing		
SCALE : NTS	DRAWN BY : MG	REV. LEVEL
DATE : Jan. 29, 2004	APPROVED BY : WSB	00
CUSTOMER :	DRAWING NO. : S85-SD	