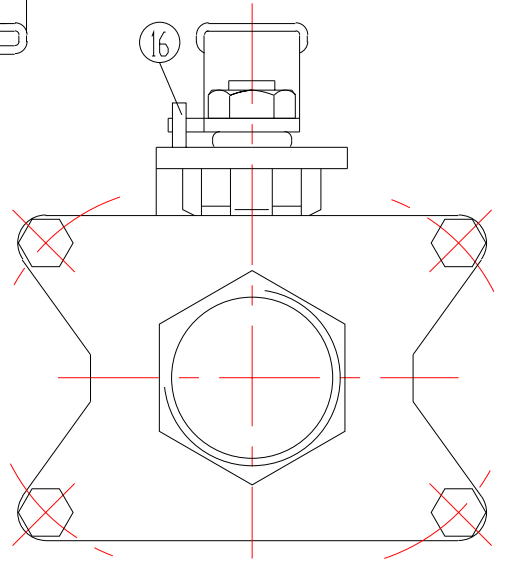
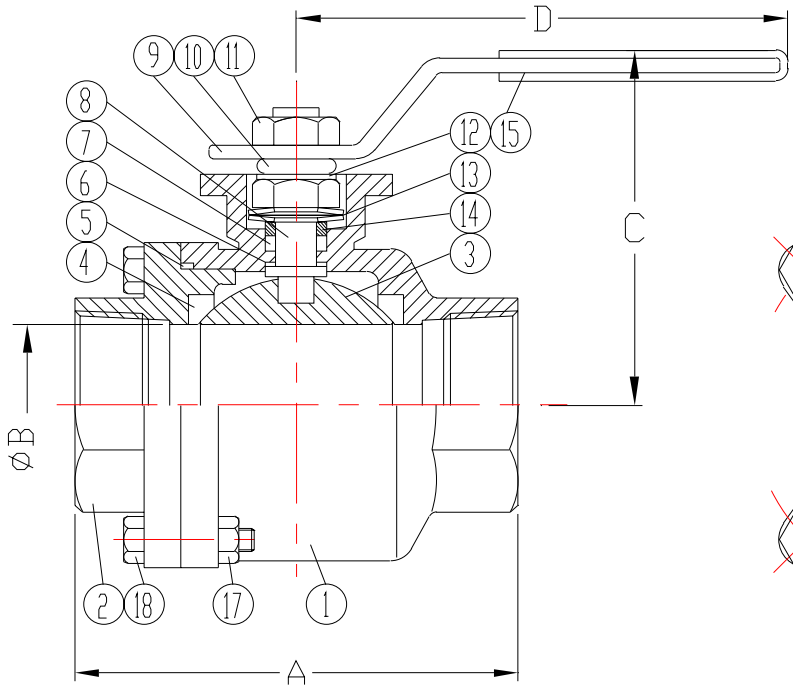
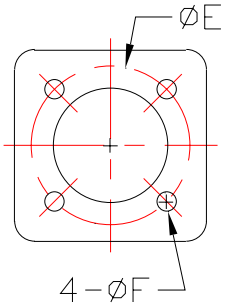
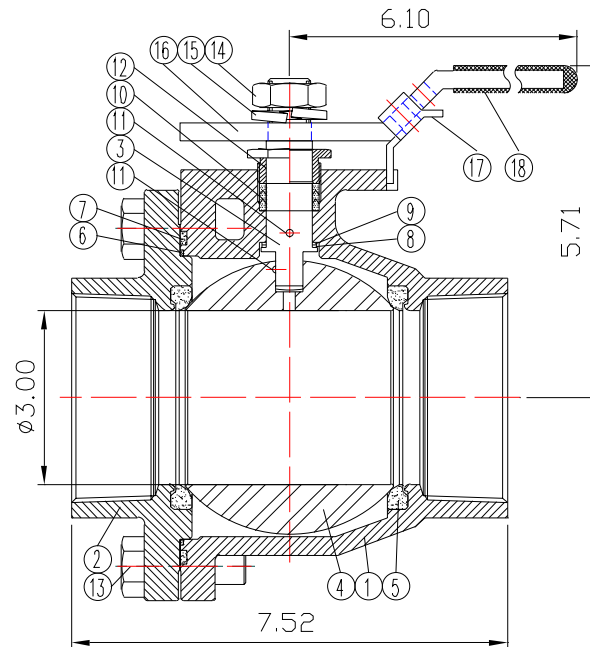
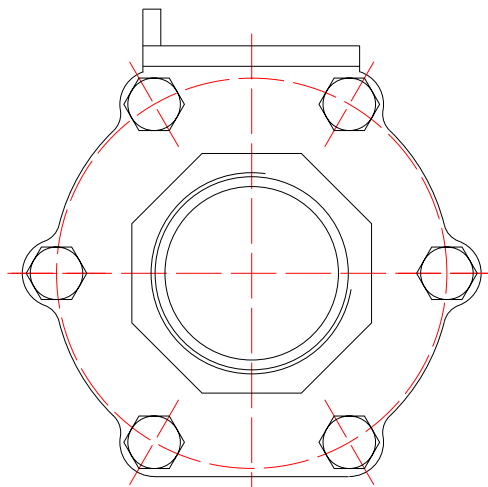
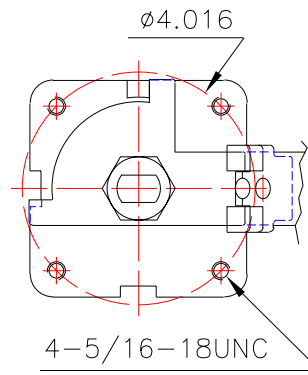


SIZE	A	B	C	D	E	F
1"	3.56	1.00	3.5	3.19	1.654	0.236
2"	5.52	2.00	4.5	4.21	1.969	0.276



No.	PART NAME	MATERIAL	Q'TY
1	BODY	ASTM A351 CF8M	1
2	CAP	ASTM A351 CF8M	1
3	BALL	ASTM A351 CF8M	1
4	SEAT	RPTFE	2
5	BODY SEAL	RPTFE	1
6	THRUST WASHER	RPTFE	1
7	STEM PACKING	RPTFE	1
8	STEM	ASTM A479 TYPE 316	1
9	HANDLE	SS-304	1
10	SPACER	SS-304	1
11	NUT	SS-304	2
12	LOCK WASHER	SS-304	1
13	BELLEVILLE WASHER	SS-301	2
14	PACKING GLAND SLEEVE	SS-304	1
15	HANDLE SLEEVE	VINYL	1
16	STOP PIN	SS-304	1
17	LOCK NUT	SS-304	4
18	BODY BOLT	SS-304	4

FLOW-TEK, INC.		SERIES H
11850 Tanner Road Houston, Texas 77041		S85RR
TEL: 832-912-2300 FAX: 832-912-2301		SIZE : 1", 2"
DRAWING TITLE : Ball Valve for Railroad Service		
SCALE : NTS	DRAWN BY : MG	REV. LEVEL
DATE : Jan. 29, 2004	APPROVED BY : WSB	00
CUSTOMER :	DRAWING NO. : S85RR-01-SD	



NO.	PART NAME	MATERIAL	Q'TY
1	BODY	CF8M	1
2	CAP	CF8M	1
3	STEM	SS-316	1
4	BALL	SS-316	1
5	SEAT	PTFE+15% GLASS FIBER	2
6	GASKET(1)	RPTFE	1
7	GASKET(2)	SPIRAL WOUND WIRE(316/GRAPHITE)	1
8	THRUST WASHER(1)	RPTFE	1
9	THRUST WASHER(2)	GRAPHITE	1
10	STEM PACKING	RPTFE	1
11	ANTI-STATIC	SS-304	2
12	GLAND NUT	SS-304	1
13	BOLT	SS-304	6
14	NUT	SS-304	1
15	SPRING WASHER	SS-304	1
16	HANDLE(B)	SS-304	1
17	LOCATING LOCK	SS-304	1
18	PLASTIC COVER	PLASTIC	1

<i>FLOW-TEK, INC.</i>		SERIES # S85RR
11850 Tanner Road Houston, Texas 77041	TEL: 832-912-2300 FAX: 832-912-2301	SIZE : 3"
DRAWING TITLE : Ball Valve for Railroad Application		
SCALE : NTS	DRAWN BY : MG	REV. LEVEL
DATE : Jan. 29, 2004	APPROVED BY : WSB	00
CUSTOMER :	DRAWING NO. :	S85RR-02-SD