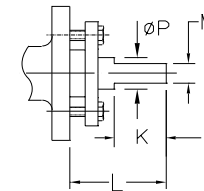
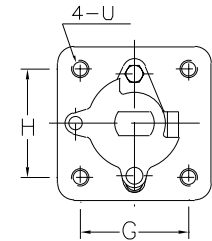
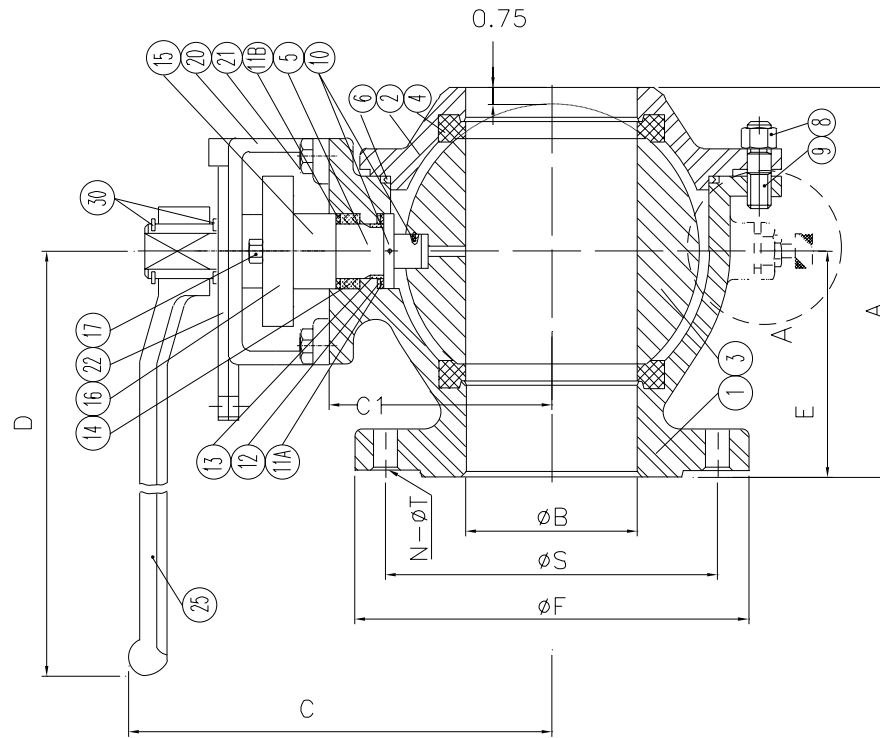


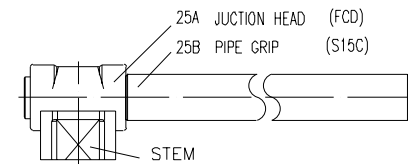
| BILL OF MATERIAL | | | TKF15-316 | TKF15-WCB |
|------------------|----------------|------|---------------------------------|------------------|
| NO. | PART NAME | QTY | STAINLESS STEEL | CARBON STEEL |
| 30 | SNAP RING | 2 | Nickel Plated Carbon Steel | |
| 25 | HANDLE | 1 | DUCTILE IRON (FCD) | |
| 22 | TRAVEL STOPPER | 1 | SS304 | Zinc Plated C.S. |
| 21 | HOUSING BOLT | 4 | SS304 | |
| 20 | STOP HOUSING | 1 | SS304 | A216-WCB |
| 17 | GLAND BLOT | 2 | SS304 | |
| 16 | GLAND | 1 | SS304 | A216-WCB |
| 15 | GLAND RING | 1 | SS304 | CARBON STEEL |
| 14 | PACKING | 3~4 | RPTFE / GRAPHITE | |
| 13 | STEM BEARING | 1 | RPTFE | |
| 12 | THRUST WASHER | 1 | RPTFE | |
| 11A/B | THRUST BEARING | 1/1 | 50% PTFE + 50% 316 | |
| 10 | ANTI-STATIC | 2 | SS316 | |
| 9 | BODY STUD | 4~16 | A193 B8 | A193 B7 |
| 8 | BODY NUT | 4~16 | A194 GR. 8 | A194 2H |
| 6 | GASKET | 1 | SPRIAL WOUND WIRE(316/GRAPHITE) | |
| 5 | STEM | 1 | ASTM A276 TYPE316 | |
| 4 | SEAT | 2 | REINFORCED PTFE | |
| 3 | BALL | 1 | A351-CF8M | |
| 2 | CAP | 1 | A351-CF8M | A216-WCB |
| 1 | BODY | 1 | A351-CF8M | A216-WCB |

| Dim | 2 1/2" | 3" | 4" | 6" | 8" | 10" | 12" |
|-----|-----------|-------|-------|-----------|-------|-------|--------|
| A | 5.84 | 6.85 | 8.25 | 12.97 | 15.00 | 18.51 | 21.62 |
| B | 2.559 | 2.992 | 4.016 | 5.984 | 7.874 | 9.843 | 11.811 |
| C | 6.22 | 6.535 | 7.20 | 11.22 | 11.58 | 13.70 | 15.28 |
| D | 15.35 | 15.35 | 15.35 | 38.98 | 38.98 | 38.98 | 38.98 |
| E | 3.08 | 3.74 | 4.47 | 7.62 | 8.35 | 10.47 | 12.01 |
| C1 | 3.39 | 3.66 | 4.39 | 7.17 | 7.60 | 9.88 | 11.46 |
| F | 7.00 | 7.50 | 9.00 | 11.0 | 13.50 | 16.0 | 19.0 |
| G | 1.874 | 1.874 | 1.874 | 3.375 | 3.375 | 4.528 | 4.528 |
| H | 3.543 | 3.543 | 3.543 | 3.375 | 3.375 | 4.528 | 4.528 |
| K | 1.752 | 1.752 | 1.752 | 1.614 | 2.126 | 2.165 | 2.165 |
| L | 3.071 | 3.071 | 3.071 | 3.425 | 3.858 | 3.740 | 3.740 |
| M | 0.669 | 0.669 | 0.669 | 1.020 | 1.020 | 1.378 | 1.378 |
| N | 4 | 4 | 8 | 8 | 8 | 12 | 12 |
| P | 1.102 | 1.102 | 1.102 | 1.713 | 1.713 | 1.969 | 1.969 |
| S | 5.50 | 6.00 | 7.50 | 9.50 | 11.75 | 14.25 | 17.0 |
| T | 0.75 | 0.75 | 0.75 | 0.88 | 0.88 | 1.00 | 1.00 |
| U | 1/2-13UNC | | | 5/8-11UNC | | | |

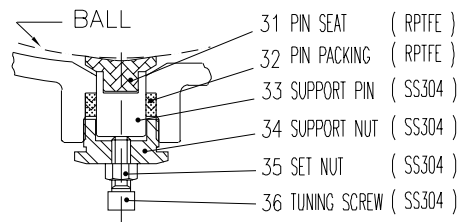
VALVE TO BE DISASSEMBLED TO FABRICATE TO TANK



Verify Mounting Dimensions
Before Manufacturing Mounting Hardware



6"-12" Handle Design



VIEW-A SUPPORT BALL DESIGN (10" & 12")

| | | | |
|--|-------------------------------|--|--------------------------|
| FLOW-TEK, INC. 11850 Tanner Road Houston, Texas 77041 | | TEL: 832-912-2300 FAX: 832-912-2301 | SERIES # TKF15 |
| DRAWING TITLE : 2-1/2"-12" TKF15 | | SIZE : 2-1/2"-12" | |
| SCALE : NTS | DRAWN BY : MG | REV. LEVEL 00 | |
| DATE : Feb. 13, 2004 | APPROVED BY : WSB | | |
| CUSTOMER : | DRAWING NO. : TKF15-02 | | |